

OMG

Orifice Meters

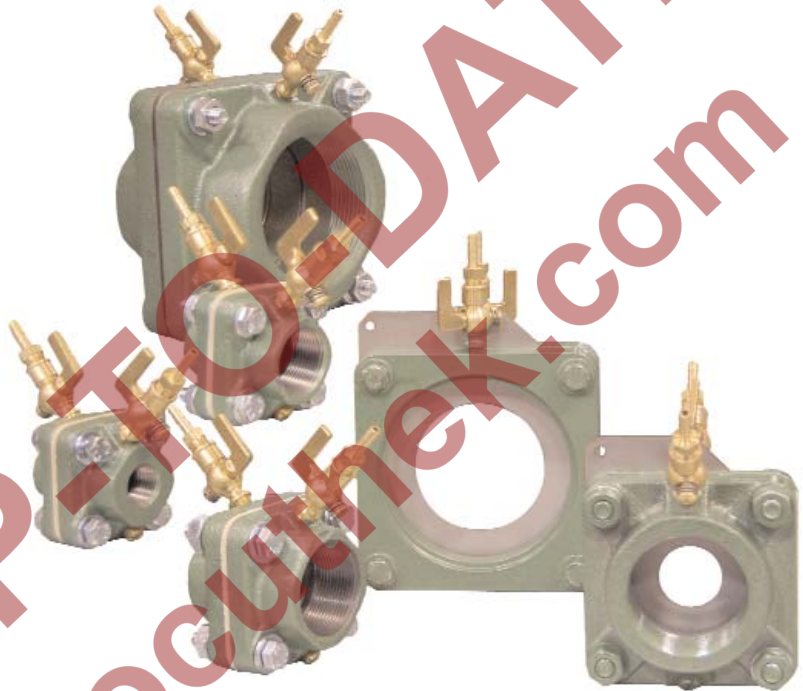


Features

- Available in threaded (NPT or metric) weld in design
- Simple one bolt plate removal of orifice plate
- Variety of orifice bore sizes
- Bore diameter identifier etched on orifice plate
- Designed in accordance to ASME flow measurement standards

Benefits

- Rugged industrial construction
- Economical flow metering
- Highly accurate results
- Easy to install
- Easy to use



Hauck OMG orifice meters offer a simple, economical means to measure air and gas flow on industrial combustion applications. OMG assemblies are available in threaded or weld-in designs. The threaded 100 series is suitable for gas or air service in 3/8" to 6" (DN 10 to 150) pipe. Additionally, the 2000 series weld-in design is suitable for air service in 8" to 28" (DN 150 to 700) sizes. A wide range of standard orifice plates enables flow measurement of natural gas from a nominal 70 to over 40,000 scfh (2 to 1,070 nm³/hr), and of air from a nominal 60 to over 660,000 scfh (2 to 17,700 nm³/hr). Customized orifice plates are available, please consult Hauck.

HAUCK MANUFACTURING COMPANY

P.O. Box 90
Lebanon, PA 17042
Phone: 717-272-3051
Fax: 717-273-9882
www.hauckburner.com

Combustion Excellence Since 1888



ADVANTAGES OF THE OMG

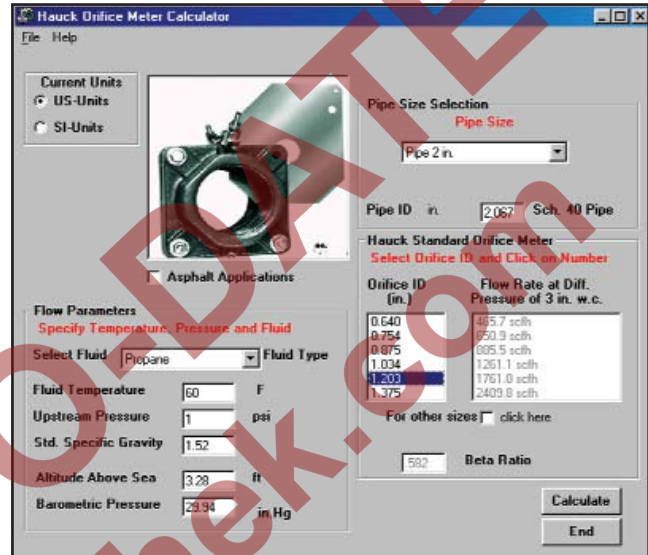
Rugged Industrial Construction

Economical Flow Metering

Easy to Install and Use, No Moving Parts

Highly Accurate Results

**User-friendly Flow Calculation Software via
e-Solutions for Combustion®**



Orifice meter sizing using Hauck's
e-Solutions for Combustion® software.

The Hauck OMG series orifice meters allow simple measurement of air and gas flow in industrial combustion systems. The OMG is designed for use in the most demanding and harsh installations. Threaded and weld-in connection options and an extensive variety of orifice bore sizes make the OMG ideal for individual burner metering and total system metering. For example, on large multi-burner installations, an OMG can be installed at each burner's air and gas connection and in the main air header or gas manifold for the furnace.

The rugged construction of the OMG series orifice meters allow pressure up to 25 psig (172 kPa) for the 3/8" to 4" size (DN 10 to 100). The 6" through 28" (DN 150 to 700) sizes are suitable for 10 psig (69 kPa) service. All OMG components are suitable for temperatures up to 250°F (121°C). Consult Hauck for higher pressure and temperature applications.

OMG assemblies not only provide accurate flow measurement, but also offer the convenience of serving as an auxiliary union connection in the piping. An OMG may be installed in any position provided the location chosen ensures easy access to both pressure cocks and sufficient clearance exists to remove the orifice plate. For maximum accuracy, use at least 6 pipe diameters upstream and 4 pipe diameters downstream of the OMG.

Hauck's e-Solutions for Combustion® software can be used to assist in proper orifice meter and plate selection. The software will calculate the flow of a given gas (natural, propane, butane, coke oven, and landfill gas or air) under varying conditions. To properly select an orifice plate, the gas temperature, upstream pressure, gas type and pipe size must be known. e-Solutions will determine gas flow at a given differential pressure across the orifice plate.