

# Eclipse BrightFire

## Burners

### Model BRT Size B

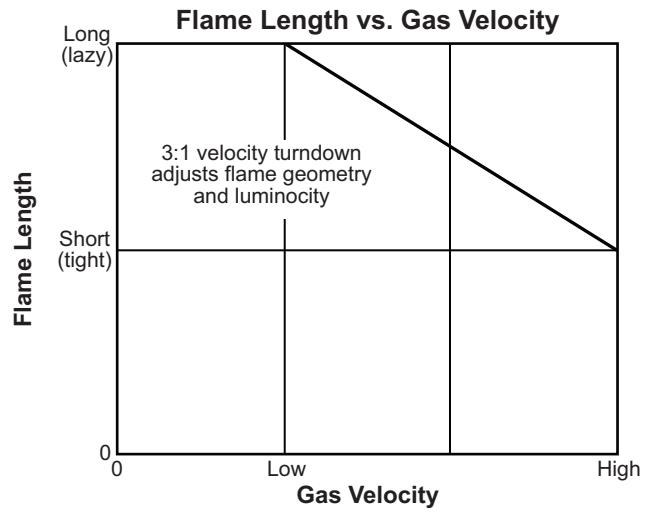
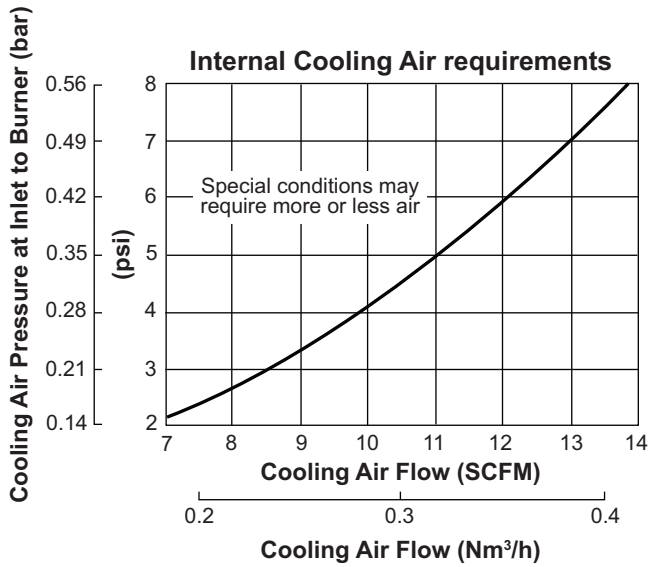
Gross Input <sup>1</sup> , MM Btu/h (kW)	Velocity Range, ft/s (m/s)	Gas Pressure Required <sup>2</sup> "w.c. (mbar)	BRT Gas Flow Curve	Atomizing Air Flow <sup>3</sup> , SCFM (Nm <sup>3</sup> /h)
11 (3223)	200-600 (61-183)	40 (100)	1110-26	73 (1.92)
13 (3809)	200-600 (61-183)	43 (107)	1110-29	86 (2.26)
15 (4395)	200-600 (61-183)	34 (85)	1110-32	99 (2.60)
17 (4981)	200-600 (61-183)	45 (117)	1110-39	112 (2.94)
17 (4981)	267-801 (81-244)	71 (177)	1110-36	112 (2.94)
19 (5567)	200-600 (61-183)	49 (122)	1110-40	125 (3.29)
19 (5567)	400-1000 (122-305)	118 (294)	1110-37	125 (3.29)
19 (5567)	267-801 (81-244)	75 (187)	1110-38	125 (3.29)
21 (6153)	400-1000 (122-305)	122 (304)	1110-41	139 (3.65)
21 (6153)	267-801 (81-244)	83 (207)	1110-42	139 (3.65)
23 (6739)	400-1000 (122-305)	129 (321)	1110-43	152 (4.00)
23 (6739)	267-801 (81-244)	88 (219)	1110-44	152 (4.00)
25 (7325)	400-1000 (122-305)	133 (331)	1110-45	165 (4.34)
25 (7325)	267-801 (81-244)	88 (219)	1110-46	165 (4.34)
28 (8204)	400-1000 (122-305)	139 (346)	1110-47	185 (4.86)
Atomizing Air Pressure (nominal requirement for rated input)			psi	bar
• < 40 SSU, #2 diesel / light oil			25	1.6
• 40 - 125 SSU, heated heavy oil			35	2.4
• 125 - 225 SSU, heated heavy oil			50	3.5
Internal Cooling Air Requirement			See page 2	
External Cooling Air Requirement			200 SCFM	340 Nm <sup>3</sup> /h
• nominal requirement through 2" (50 mm) pipe pointed at burner / socket mounting				
Materials: Burner body / Inner nozzle / Outer nozzle			304 SS / 440 SS / Ductile Iron	

1.) Inputs based on gross calorific value natural gas; 1000 Btu/ft<sup>3</sup> at standard conditions (40 MJ/m<sup>3</sup> at normal conditions) and SG = 0.60.

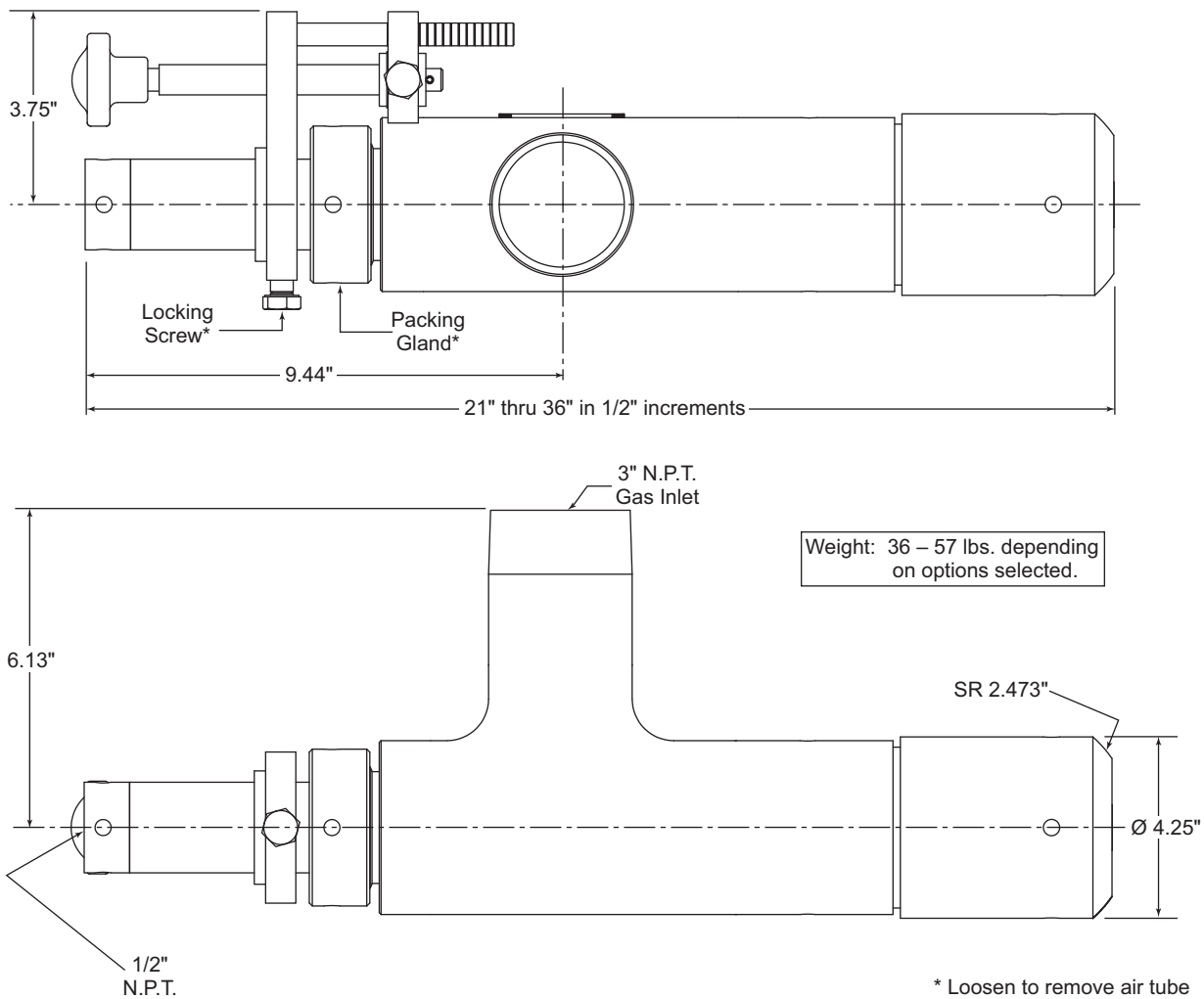
2.) Gas pressure required at the gas inlet to the burner for rated gross input and maximum velocity.

3.) Nominal atomizing air flow at 35 psi (2.4 bar).

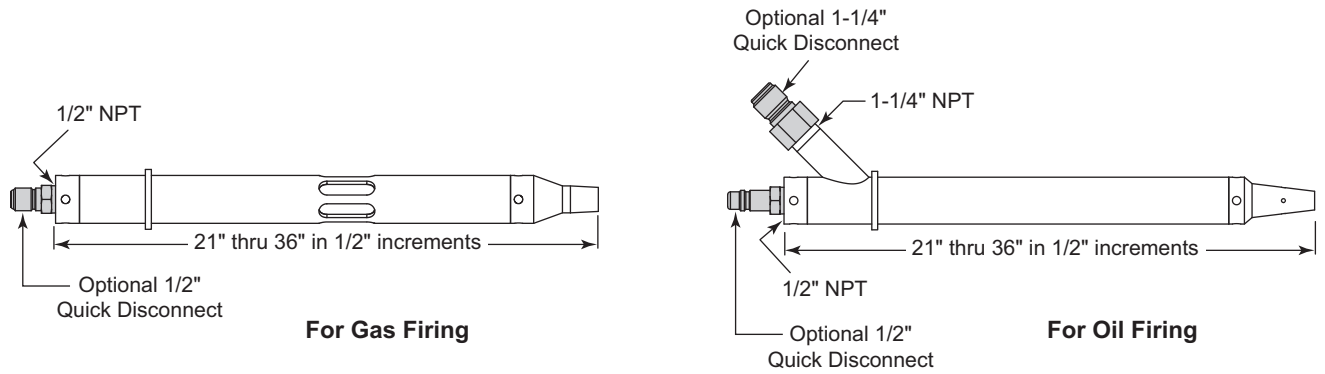
## Specifications



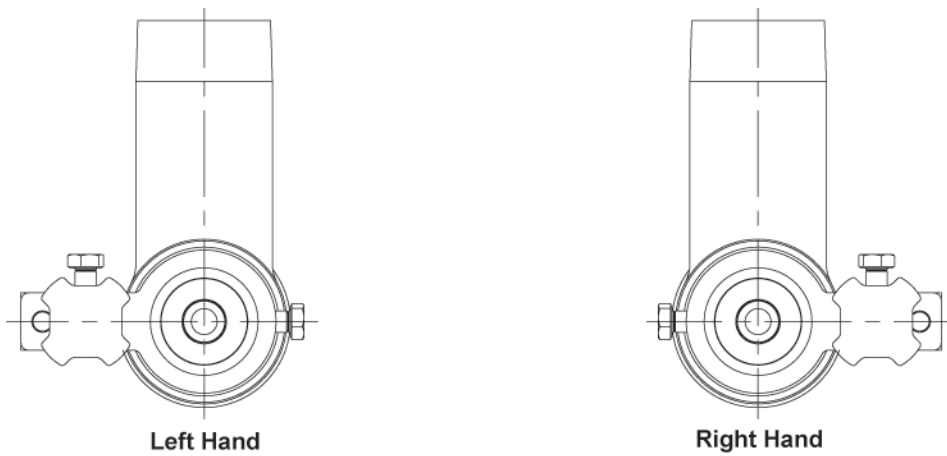
## Dimensions



## Spare Air Tube



## Adjusting Screw



## Configurations

