

**This product is discontinued!**



**EnSonic  
Installation Manual**

**Document code: 10735.INST.004**

**Document** EnSonic: Installation Manual

**Document code** 10735.INST.004

**Date** June 25, 2003

**Publisher** Instromet International N.V.

Rijkmakerlaan 9  
B 2910 Essen  
Belgium

Phone: +32-3-670 0700  
Fax: +32-3-667 6940

**Copyright** © 2003, Instromet International N.V., Essen, Belgium  
Instromet International N.V. is a member of the Instromet group.

All technical and technological information contained in this manual, including any drawings and technical specifications remain the property of Instromet International N.V. and may not be used (other than for the operation of this product), copied, multiplied, passed on or communicated to a third party without the prior written permission of Instromet International N.V.

**Trademarks** Products listed are trademarks of their respective manufacturers. Company names listed are trade names of their respective companies

<b>Revision History</b>	<b><u>Revision</u></b>	<b><u>Remark</u></b>	<b><u>Date</u></b>
	002	First edition	25-06-2003
	003	ACAD drawings implemented	4-07-2003
	004	A number of issues added	20-01-2004

## Preface

This document describes the mechanical installation procedure for the EnSonic Energy Measurement System.

The overall system layout is presented in figure 1. Normally, the EnSonic is installed in the hazardous area as close as possible to the gas sample point. The gas (pressure between 40 and 80 bar) is led to the EnSonic using a heat traced tubing. After being analyzed by the EnSonic the gas is vented into the atmosphere via the vent pipe on the right side of the unit. The auto-calibration system which supplies reference gas to the system on regular intervals to check the performance is shown on the left side of the unit. During operation the bottle with reference gas is strapped to the back side of the unit.

The power supplies (24 VDC and 220 VAC) and the M2000 display and control unit are located in the safe area. The cabling between the unit in the field and the safe area consists of a data, a 24 VDC and a 220 VAC cable. The data and 24 VDC cable may be combined.

In the safe area the measurement data is presented to the customer via:

- a) the analog and digital outputs of the M2000 display and control unit
- b) the Instromet Supervisory System

or

- c) a user supplied dedicated data logging system

When using the M2000 the user is able to initiate both the auto-calibration and reset function of the EnSonic remotely via the digital contact inputs of the M2000.

The mechanical installation of the system is described first, the electrical connections are described secondly.

*Note: since the EnSonic is installed and operated in the hazardous area where explosive gas mixtures may be present, the necessary safety precautions should be taken when handling, installing or operating the system.*

*The Eex-d box containing the electronics should be de-energized before opening.*

Related documents:

'EnSonic User Manual'	code: 10735.USER.001	dd 20-01-2004
'EnSonic Programmer'	code: 10735.ENSCNF.001	dd 25-01-2004
'Model 2000 Programmer'	code: 10735.M2KCNF.001	dd 25-01-2004
'Model 2000 Gas Flow Computer'	code: Model 2000 issue 6, 202/09-02	dd 16-09-2002

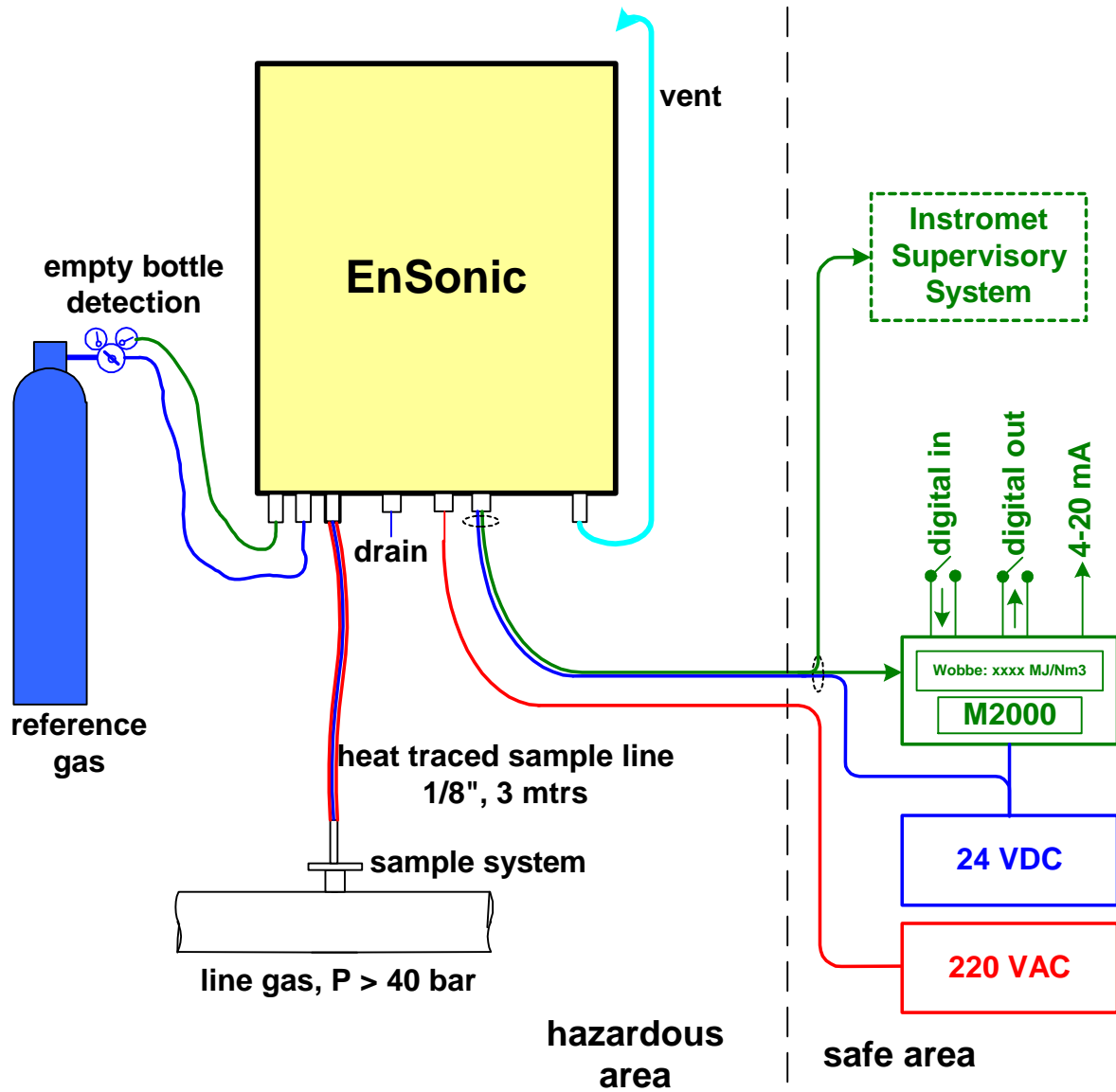


Figure 1, System Layout

## **1. Mechanical installation**

The following items need to be mounted prior to making the electrical connections:

- 1) the EnSonic Skid
- 2) the M2000 flow computer

Since the M2000 is the only part that needs to be installed separately from the EnSonic measurement unit each chapter presents the installation of the M2000 as a separate subject, in cases where no M2000 is used these sections may be skipped.

### EnSonic Skid

The EnSonic measurement system comes mounted on a skid enabling easy field installation. The recommended way to install the system is to mount the skid on a concrete base taking local regulations into account. The skid is mounted using M12 bolts (4 pieces) placed on a 450 x 750 mm rectangle (the front of the EnSonic faces the short side of this rectangle). The dimensions of the skid are presented in Appendix B.

When selecting a suitable place to install the EnSonic the following considerations should be kept in mind:

- 1) the unit should be installed as close as possible to the sample point to minimize delay times due to long sample lines
- 2) although not frequently, the reference gas bottle needs replacement so there must be some space available on the back of the EnSonic to handle the reference gas bottle
- 3) the sampled gas is vented from the top of the EnSonic so provisions must be taken to reduce the build up of high gas concentrations, when necessary local regulations need to be followed
- 4) since the EnSonic internally operates at 50 °C the maximum ambient temperature of the EnSonic is set at 30 °C, therefore in some installations the EnSonic may have to be shielded from direct sunlight

After mounting the EnSonic skid the connection between the sample point for the line gas and the EnSonic should be made using the heat-traced sample line mounted on the bottom of the unit. This sample line contains 2 separate 1/8" tubings which are used for the line and the reference gas. The length of the sample line may be reduced to 2 m to facilitate the installation. An adapter set is included to connect the EnSonic to a system with 3 mm tubing. The heated tracing should be properly terminated using the provided termination set.

The reference gas bottle should be properly strapped to the back-side of the skid and the pressure reducing valve should be installed. The blue wire of the pressure switch should not be damaged. The outlet of the pressure reducing valve should be connected to the proper inlet of the heat-traced tubing, the length of this part of the tubing is not critical. At this stage: do not supply pressure to the system!

### M2000

The M2000 display and control unit is mounted in the safe area and the M2000 manual should be consulted for the mechanical installation procedure.

All connectors (: power supply, serial communication ports, analog and digital outputs and digital inputs) are located on the back side of the unit. Since the twelve digital outputs are opto-coupler based each digital output requires an additional relay to switch larger currents. These relays have to be mounted on a different location close to the M2000.

The M2000 is configured via the infra-red serial port located on the front panel of the unit. A serial infra-red adapter can be fixed to the unit.

## **2. Electrical Installation**

The guidelines in this section should be followed to ensure proper functioning of the complete system. The unit should be properly grounded and connections should be made carefully to ensure long term, failure free operation.

The electrical installation of the EnSonic is split in two parts:

- 1) the field connections to the EnSonic measurement system
- 2) the indoor connections to the EnSonic measurement system and the M2000

### Cabling required

Although the measurement data from the EnSonic is present on a 2-wire RS485 serial interface with MODBUS protocol it is recommended to increase the number of data communication wires to facilitate the service of the instrument. Therefore the following cabling should be present:

1) Data communication:

- a) MODBUS port 2, main measurement data : RS232 or RS485, 2 x 2 shielded twisted pair
- b) MODBUS port 1, configuration : RS232, 2 x 2 shielded twisted pair
- b) Ultrasonic unit data & configuration : RS485, 1 x 2 shielded twisted pair

2) Power supply: nom. 24 VDC, max. 120 W (5 A during startup): 2 wires, shielded

3) Heated tracing: 220 VAC, 3 wires, shielded and armoured

During normal operation MODBUS port 2 of the EnSonic is used to transmit the main measurement data to the M2000. For configuring and servicing the EnSonic system port 1 is used.

The electronic unit of the ultrasonic velocity of sound measurement unit can be serviced and configured by Instromet using the RS485 communication port of this unit (however, directly issuing commands to the unit will interrupt the normal operation of the EnSonic system).

All data communication cables may be combined into one 5 x 2 x 0.8 mm<sup>2</sup> armoured shielded cable.

Since the electronics, the internal heating system and the stream selection valve of the EnSonic consume a reasonable amount of power the resistance of the 24 VDC power supply cable is of importance. To ensure an input voltage of the system in the field of at least 22 VDC (max. 28 VDC) a low resistance cable should be selected. As an example: when using a 24 VDC supply as power source the maximum voltage drop of 2 V (: 24 – 22 V) combined with a current of 5 A during startup results in a maximum cable resistance of 0.2  $\Omega$  per wire (0.4  $\Omega$  total). Increasing the input voltage to 28 VDC allows for a cable resistance of 0.6  $\Omega$  per wire (1.2  $\Omega$  total). Although at least a 2 x 2.5 mm<sup>2</sup> armoured shielded cable is recommended the power supply voltage present on the unit should always be checked. If the remaining voltage drops below 22 VDC a lower resistance cable and/or a higher voltage power supply needs to be installed.

The 220 VAC is used for the heated tracing of the sample line. A 3 x 1.5 mm<sup>2</sup> armoured shielded cable is recommended.

### Field connections

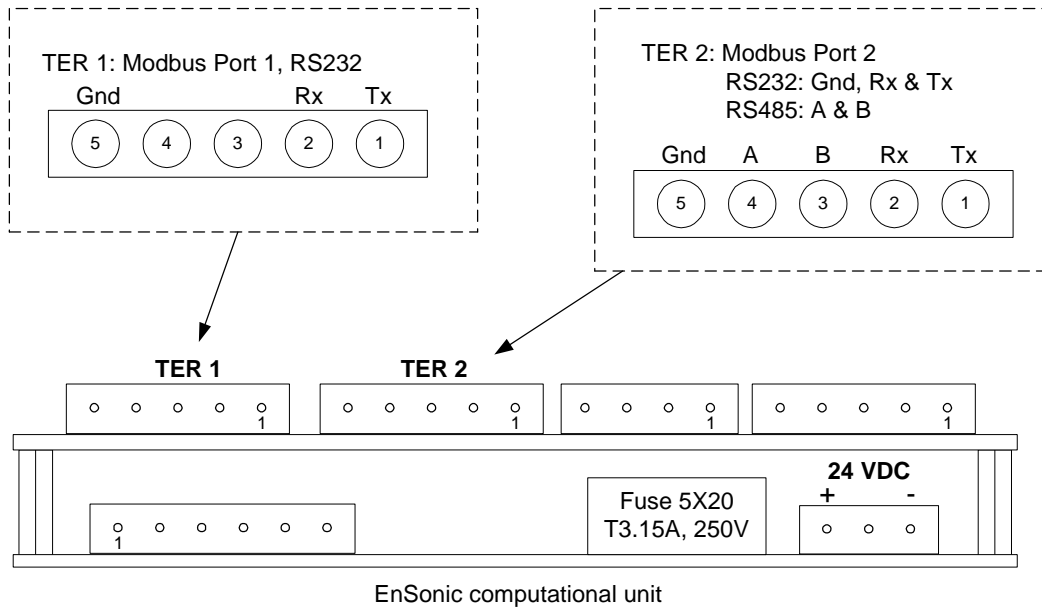
In the field the following connections have to be made to the EnSonic unit.

The 220 VAC power supply is connected to the heat tracing using the terminals in the Eex-e box which is mounted in the lower left part of the EnSonic cabinet. The heated tracing itself should be properly terminated using the provided termination set.

The data communication and 24 VDC power supply are connected to terminals located in the Eex-d box of the EnSonic. To make the connections the cover of the box should be removed using the proper tool. Care should be taken when handling the relatively heavy cover.

The 24 VDC power supply is connected to the terminal block located on the left side of the temperature transmitter. The polarity is indicated on the terminals. Checking the actual polarity of the power supply before making the connections is recommended.

The data communication wires are connected to the processor board of the EnSonic located directly above the 2VOS body. Fig 2 shows the terminal lay-out of this board.



**Figure 2, Terminal lay-out**

When making the connections the following should be taken into account:

- 1) in the Eex-d box the EnSonic computational unit is mounted upside down, consequently the pin orientation shown in figure 2 must be regarded from left to right (in the box pin 1 is on the left side of the terminal)
- 2) TER2 (: terminal 2) is assigned to port 2 which is used for the communication with the M2000. It is recommended to use the RS485 communication protocol (pin 3 and 4) for this purpose (the required protocol is selected using the EnSonic configuration software). A twisted pair cable should be used.
- 3) TER1 (: terminal 1) is assigned to port 1 which is used to configure and check the EnSonic. Since this port operates in the RS232 mode only, an additional RS232-485 converter may be installed depending on the cable length in the installation. In this case a twisted pair cable should be connected to the RS232-485 converter instead of TER1. When the RS232 mode is used two twisted pair cables should be used.
- 4) The connection to the ultrasonic measurement unit is not described here since this unit is configured during the assembly of the EnSonic. The measurement data from the ultrasonic unit is available via the Modbus registers of the EnSonic. This connection is only to be made by qualified Instromet employees.
- 5) The shielding of the data communication cable should be properly connected following the installation instruction of the Eex-d cable gland.
- 6) The intrinsic safe connection of the empty bottle detection should be checked: the blue wire from the pressure switch mounted on the pressure reducing valve of the bottle with reference gas should be connected to the barrier located on the left side of the box.

**Remark:**

At the time of writing this document an alternative method to connect the data communication wires to the unit has been implemented. To the left of the Power Supply terminals a number of terminals is available for the communication wires:

Upper row labeled 1, 2, 3 and 4 -> Port 1: Tx, Rx & Gnd and Port 2: RS485-A

Lower row labeled 5, 6, 7 and 8 -> Port 1: Tx, Rx & Gnd and Port 2: RS485-B

Which method will be used finally is not yet known.

## Indoor connections

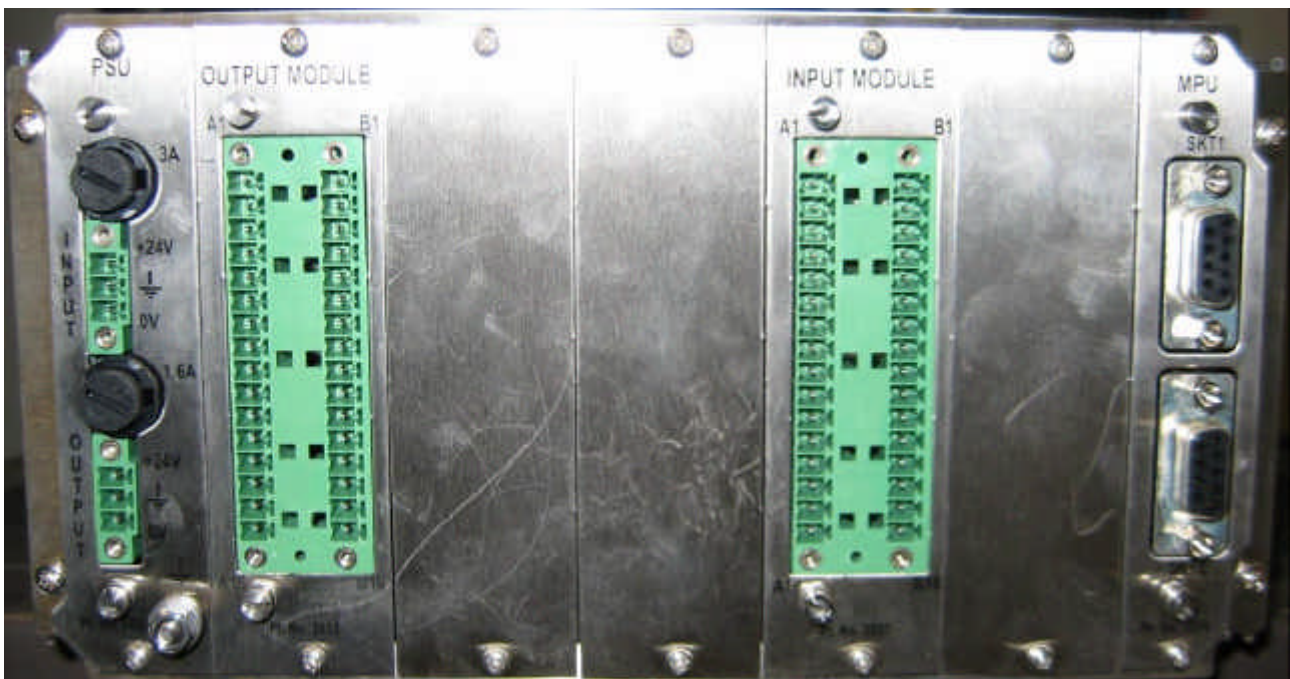
The following connections should be made in the safe area.

The 220 VAC power supply should be properly connected to the power supply cable of the heated tracing. Before supplying power the grounding of the cable should be checked.

A 24 VDC power supply should be connected to the 24 VDC power supply cable of the unit in the field. Before powering the unit the polarity should be checked.

The following connections should be made to the M2000 (all connectors are available on the backside of the unit), see fig 3.

- 1) a 24 VDC power supply should be connected to the power input of the M2000 on the left side (the power output is used to supply power to the relays connected to the digital outputs)
- 2) the serial data communication cable should be connected to SKT1 (female 9-pin sub-D connector) on the MPU board located on the right side:
  - a. when in RS232 mode: pin 2 (:TX), 3 (: RX) and 5 (: GND) must be used
  - b. when in RS485 mode: pin 6 (: A) and 9 (: B) must be used
- 3) on the output module the following connections are available:
  - a. digital outputs which need to be connected to the corresponding relays (A1 / B1, ....., A12 / B12)
  - b. analog outputs (pin A13 / B13, A14 / B14, A15 / B15 and A16 / B16)



**Figure 3, Backpanel M2000**

- 4) Three digital inputs are located on the input module (A1, B3 and A3), two of these inputs need to be connected to the control system of the user. Since the function assignment is software selectable using the M2000 configuration software the actual mapping of the connections to the digital input is not important. Jumpers 6, 8 & 10 on the input board have to be fitted.

The connections should be made according to the figure in appendix F.

For the detailed specification of the in- and outputs the manual of the M2000 has to be consulted.



### **3. Powering up the EnSonic**

After installing the unit and making the electrical connections the unit can be powered up using the following procedure:

- 1) The 24 VDC power supply to the M2000 can be switched on and after a few seconds the M2000 should present readable information on its screen. If not, the power supply should be switched off immediately and the error should be traced.
  
- 2) The 24 VDC power supply to the EnSonic unit in the field can be switched on and the following checks should be performed immediately (only for visibility reasons it is recommended to leave the cover of the Eex-d box removed, however check for the presence of explosive mixtures before energising the unit):
  - a. The three red LED's on the EnSonic processor board should start blinking, after a few seconds the LED's should be blinking simultaneously which indicates proper communication with the other devices in the system. If one of the LED's is not lit or does not blink most likely a communication failure exists with one of the devices in the system.
  - b. The two LED's on the EnSonic interface board should blink simultaneously. The LED's may be difficult to see since they are located on the far end of the board. If one of the LED's is not lit or does not blink most likely a communication failure exists with one of the devices in the system.
  - c. Initially, the screen of the PID controller should indicate 'Startup'. After a few seconds the upper line on the display should indicate 'UFL' (: UnderFlow) while the lower line shows the set temperature of 50.00 °C. This underflow condition is to be expected since the temperature of the 2VOS body will initially be outside of the span of the temperature transmitter which ranges from 45 °C to 55 °C. When the body temperature rises above the lower limit of the range the PID controller will start indicating the actual body temperature.
  - d. The three LED's on the processor board of the ultrasonic meter should be lit or blinking. These LED's may be difficult to see since they are located on the far end of the board. The green LED indicating a proper power supply should be lit continuously. The yellow LED should be blinking once per second indicating the transmission of data on the serial communication port. The red LED should be blinking at high rate indicating the measurement rate of the ultrasonic unit.
  - e. The bright white LED on the sensor of the CO2 analyser should be blinking regularly and the small red LED which lites directly after startup should be switched off after a few seconds.
  - f. One or more LED's on the barrier of the empty bottle detection should be lit.

If any of these conditions is not met the power should be switched off immediately and the cause of the error should be traced.

- 3) The data communication between the unit in the field and the M2000 can be checked by watching the measurement results presented on the screen of the M2000. To achieve this the following keystrokes should be entered on the front panel of the M2000:
  - a. Press the F4 button under the word 'Menu' displayed on the screen
  - b. Press the upper or lower arrow key on the right side of the screen until the item GAS DATA is visible and highlighted
  - c. Press the ENTER key to select this item
  - d. In the displayed menu select RECEIVED to view the actually received calculation results, use the arrow keys to view the different pages.

Although the data itself should not be displaying proper or meaningful values, the trailer of the data should indicate 'OK'. If the trailer indicates 'ALM' or 'NA' proper communication with the unit in the field is not established. If the communication fails the settings of both communication ports should be checked using the configuration software.

- 4) The 220 VAC power supply to the heated tracing can be switched on. After a while the temperature of the tracing should rise. If not, the connections should be checked.

After successfully completing the first 2 of the above 4 steps a PC or laptop with the EnSonic configuration software should be connected to communication port 1 of the EnSonic processor board. Depending on the use of a RS232-485 converter in the Eex-d box an additional RS485-232 converter may be necessary to make the proper connection. When necessary (and allowed!) a direct connection between a laptop and port 1 of the EnSonic processor board can be made in the field. However, check for the presense of explosive mixtures before doing this!

By running the EnSonic configuration software the performance of the system can easily be checked. The software itself is described in more detail in the corresponding manual.

Using an infra-red serial adapter and the M2000 configuration software the M2000 can easily be configured. The M2000 configuration software is described in more detail in the corresponding manual.

It is good practise to upload and save the original settings of the EnSonic and the M2000 when the unit is working properly after the system has been powered up for the first time.

## **4. Troubleshooting**

This section describes some procedures to troubleshoot the EnSonic system.

After switching on the 24 VDC power supply the unit in the field does not start-up properly or behaves irrationally:

The voltage level of the power supply should be checked on the unit itself. If the level falls below 21 Volts a lower resistance cable or a power supply with a higher voltage level should be used.

The three red LED's on the EnSonic processor board or the 2 LED's on the interface board do not blink simultaneously:

In Appendix C and D all possible LED states are presented. Most likely one or more of the devices in the system is not communicating properly with the processor or interface board. Check the operation of the individual devices by looking at their status LED's or check their power supply. The baud rates and HART addresses of the different devices can be set using the EnSonic configuration software. However, since these values are factory set errors are not likely to occur in these settings.

There is no communication between the unit in the field and the M2000:

Switch the A & B wire of the RS485 communication either on the unit in the field or on the backside of the M2000.

Check the settings of the communication ports using the EnSonic configuration software and the M2000 configuration software. Both ports should have the same settings (baud rate: 38400).

The proper Modbus register configuration must be assigned to port 2. Two different settings can be configured and the setting of port 2 must resemble the setting expected by the M2000.

The M2000 requires a so called stream number, if the stream number is not set the M2000 is simply not polling the EnSonic unit for measurement data. Use the M2000 configuration software to set the stream number.

After switching the 24 VDC power on and off the system has lost its configuration and clock settings:

Both the M2000 and the EnSonic processor board come with a lithium battery to save their settings. The battery back-up must be switched on by setting a dip-switch on the board which is normally done during assembly of the units. The dip-switch settings for the EnSonic and the M2000 are presented in appendix E.

The dip-switches of the EnSonic are located on the processor board, to set the dip-switches of the M2000 the small black plastic cover on the side of the M2000 has to be removed carefully.

The EnSonic configuration software is not able to communicate with the EnSonic processor board:

Check the wiring and the COM:-port settings of the configuration software. When in RS232 mode: switch the TX and RX lines. When in RS485 mode: check the settings of the converters and/or try to communicate via the RS232 mode, to achieve this it may be necessary to connect a lap-top directly to the unit in the field (check for explosive atmospheres before doing this!)

Some modern PC's or laptops mimic serial COM:-ports via one of their USB ports. Be sure that the serial COM:-port is actually working. Experience revealed that 'Edgeport' USB to RS232 converters do function properly under Windows XP.

The M2000 configuration software is not able to communicate with the M2000:

Communication via the infra-red port can be time consuming. The infra-red adapter should be fixed properly to the M2000. Check the COM:-port settings of the configuration program and the M2000 (baud rate: 38400).

Some modern PC's or laptops mimic serial COM:-ports via one of their USB ports. Be sure that the serial COM:-port is actually working. Experience revealed that Edgeport USB to RS232 converters do function properly under Windows XP.

## Appendix A, Specifications

### Skid

Overall Dimensions : 1900 x 800 x 600 mm  
Mounting : 4 x M12, rectangle 450 x 750 mm  
Weight : approx. 80 kg

### Electrical

#### Power supply

EnSonic : 21 - 28 VDC / 2.5 A / 60 Watt  
M2000 : 21 - 28 VDC  
Tracing : 220 VAC

#### Communication

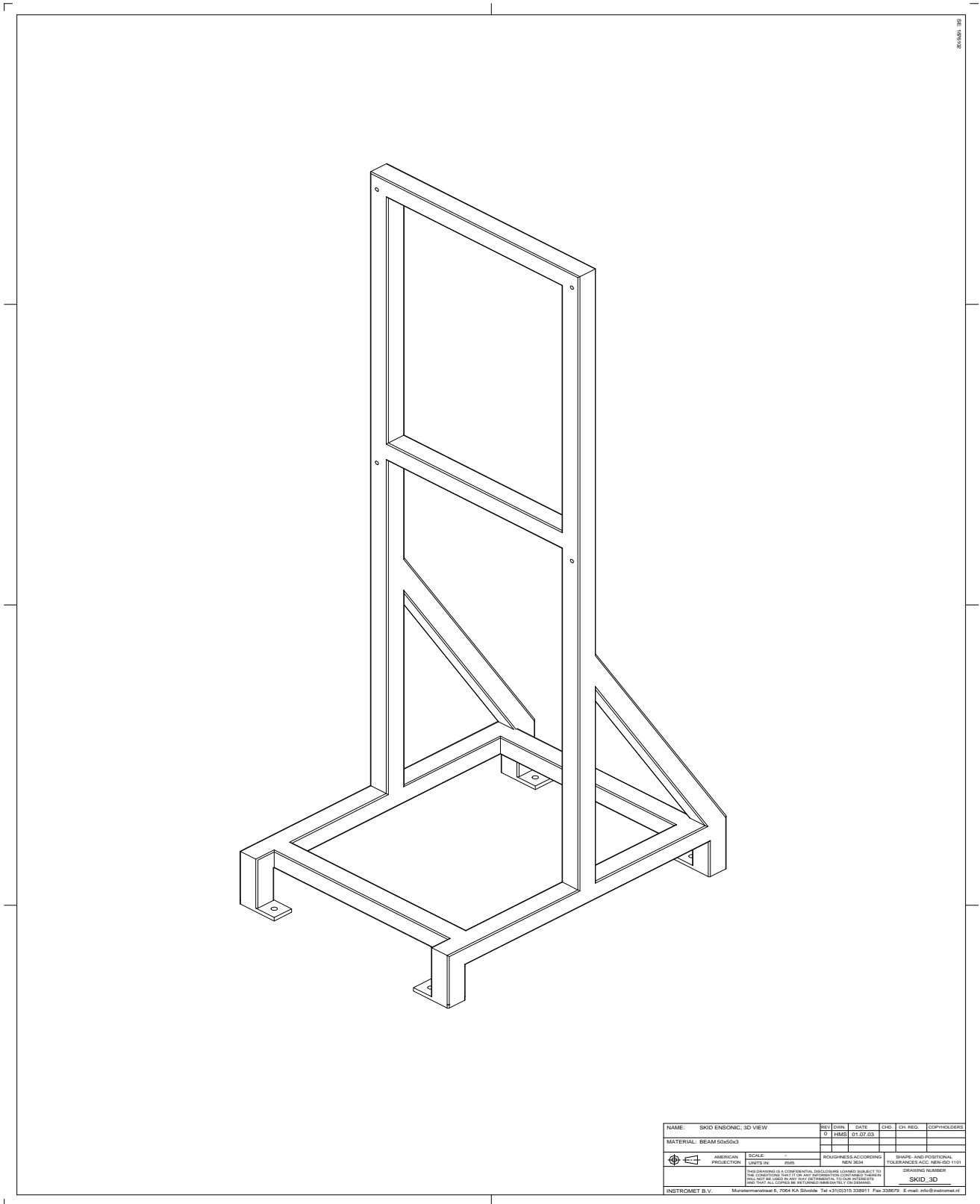
EnSonic data : RS 485 or RS232 , MODBUS RTU or ASCII  
EnSonic service : RS 232, dedicated protocol  
US data & service : RS 485, dedicated protocol

### Cable requirements:

Data : 5 x 2 x 0.8mm<sup>2</sup>, twisted pair, shielded & armoured  
24 VDC : 2 x 2.5 mm<sup>2</sup>, shielded & armoured  
See remarks about power supply before installing power supply cable!  
220 VAC : 3 x 1.5 mm<sup>2</sup>, shielded & armoured

**Appendix B, Skid Dimensions**

Figure B.1: Skid 3D-view



NAME: SKID ENSONIC, 3D VIEW	REV	DATE	CHKD	CRJ. SEQ.	COPY/ISSUES
MATERIAL: BEAM 50x50x3	0	01.07.23			
 AMERICAN PRODUCTION	SCALE:	ROUGHNESS ACCORDING	SHAPE AND POSITIONAL TOLERANCES ACC. TO EN ISO 1101		
	1:1	REUR 3001	DRAWING NUMBER		
<small>THIS DRAWING IS A CONFIDENTIAL PROPERTY OF ELSTER. IT IS TO BE KEPT SECRET AND NOT TO BE REPRODUCED OR TRANSMITTED IN ANY FORM OR BY ANY MEANS, ELECTRONIC OR MECHANICAL, INCLUDING PHOTOCOPYING, RECORDING, OR BY ANY INFORMATION STORAGE AND RETRIEVAL SYSTEM.</small>					SKID_3D
<small>INSTROMET B.V. - Muntweg 6, 7064 KA Sluissele - Tel +31(0)315 338511 - Fax 338575 - E-mail: info@instromet.nl</small>					

Figure B.2: Skid Topview

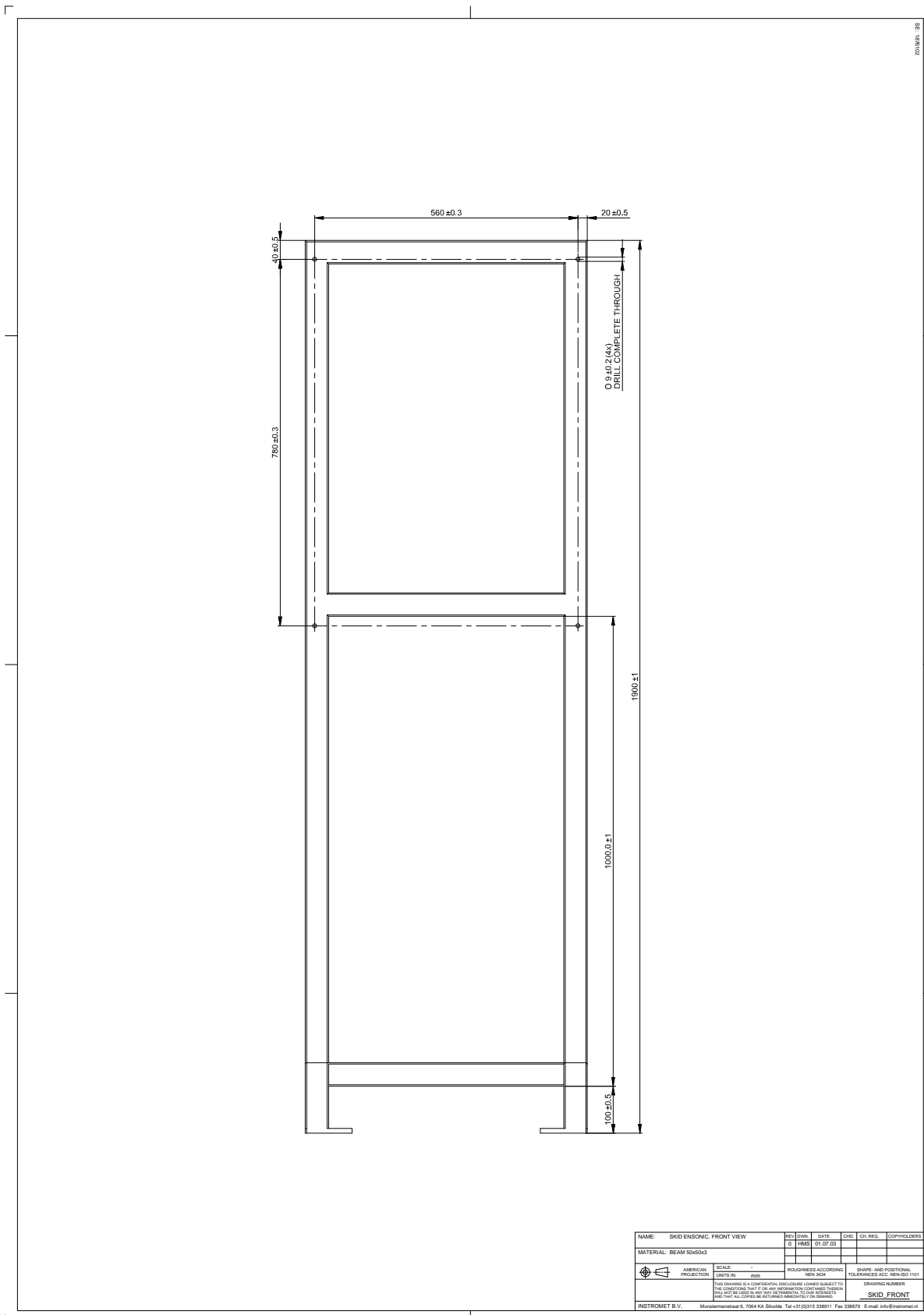
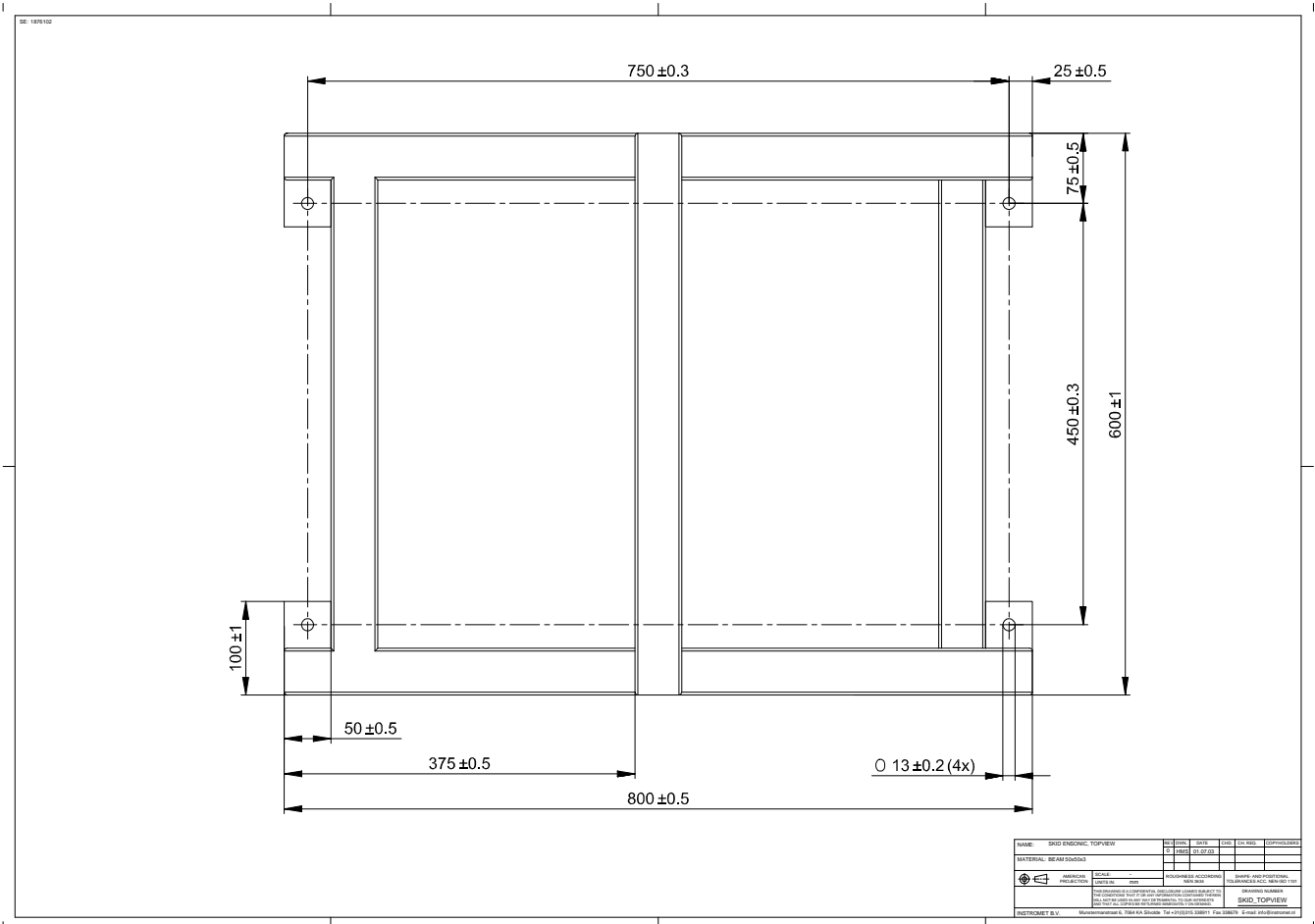


Figure B.3: Skid Frontview



### Appendix C, LED Status Indication EnSonic Processor board

The 3 red LED's located on the processor board of the EnSonic computational unit provide full information about its current status. Depending on the operation mode the following LED combinations are supported:

When in MAIN PROGRAM (: normal operation) mode the following 3 condition groups can be distinguished:

Operating conditions:

LED 1	LED 2	LED 3	Status definition	Remark
FLASH	FLASH	FLASH	LED_OK	OK
OFF	FLASH	OFF	LED_WAIT_STATE	Waiting for system power up
ON	FLASH	ON	LED_UNKNOWN	Unknown state

Fault conditions:

LED 1	LED 2	LED 3	Status definition	Remark
FLASH	ON	FLASH	LED_DATA_FAULT	Data fault
FLASH	OFF	FLASH	LED_INPUT_BOARD	Input board fault

Warning conditions:

LED 1	LED 2	LED 3	Status definition	Remark
FLASH	FLASH	ON	LED_HART_SENSOR	Hart Sensor
FLASH	FLASH	OFF	LED_ULTRASONIC	Ultrasonic
ON	FLASH	FLASH	LED_CO2_METER	CO2 meter
OFF	FLASH	FLASH	LED_OTHER	Other

When in BOOT PROGRAM mode (used by Instromet to update the embedded software) the following LED combinations are supported:

LED 1	LED 2	LED 3	Status definition	Remark
FLASH	ON	ON	LED_PROGRAM_CORRUPTED	Failure
FLASH	OFF	OFF	LED_PROGRAM_OK	OK
FLASH	ON	OFF	LED_PROGRAM_DOWNLOADING	Downloading
FLASH	OFF	ON	LED_UNKNOWN	Unknown state

Summarizing: when all three LED's are flashing the meter is working properly, all the other combinations indicate a non-standard condition.



**Appendix D, LED Status Indication EnSonic Interface board**

The 2 red LED's located on the interface board of the EnSonic computational unit provide full information about its current status. Depending on the operation mode the following LED combinations are supported:

<b>LED 1</b>	<b>LED 2</b>	<b>Status definition</b>	<b>Remark</b>
OFF	ON	LED_UART	UART failure
FLASH	OFF	LED_COMMS	Comms problem
FLASH	ON	LED_HART1	Hart Sensor 1
OFF	FLASH	LED_HART2	Hart Sensor 2
ON	FLASH	LED_HART3	Hart Sensor 3
FLASH	FLASH	LED_OK	OK
ON	OFF	LED_UNKNOWN	Unknown state

Summarizing: when both LED's are flashing the board and the communication are working properly, all the other combinations indicate a non-standard condition.

## Appendix E, Dip-switch settings

The four dip-switches of the EnSonic and the M2000 have the following functionality:

SWITCH 1: SECURITY  
SWITCH 2: SECURITY  
SWITCH 3: BOOT MODE/RUN MODE  
SWITCH 4: BATTERY

### Security Modes:

SWITCH 1 = OFF SWITCH 2 = OFF : UNIT TOTALLY SECURE  
SWITCH 1 = ON SWITCH 2 = OFF : UNIT PARTIALLY SECURE  
SWITCH 1 = OFF SWITCH 2 = ON : UNIT PARTIALLY SECURE  
SWITCH 1 = ON SWITCH 2 = ON : UNIT NOT SECURE

The security setting is determined by the user.

### Boot/run mode:

SWITCH 3 OFF = BOOT MODE : set when uploading embedded software  
ON = RUN MODE : set for normal operation

### Battery:

SWITCH 4 OFF = BATTERY OFF : set during storage  
ON = BATTERY ON : set during normal operation