

03250886

1000063767-002-29

Honeywell

DE, EN, FR, NL, IT, SK, RU, ES, RO, SR, CS, PT
 → www.docuthek.com

Operating instructions
Diaphragm gas meters
BK-G1.6 to BK-G25



Contents

Diaphragm gas meters BK-G1.6 to BK-G25 . 1
Contents 1
Safety 1
Checking the usage 2
 Diaphragm gas meters BK-G1.6 to G25 2
 BK with integrated valve 2
 Type code 2
 Part designations 2
 Type label/Index plate 2
 EX identification 3
Installation 4
Temperature test point 5
Pressure test point on housing (optional) . . . 5
 Connecting the piping 6
Pressure test point on outlet connector
(optional) 6
 Opening the test nipple 6
 Closing the test nipple 6
Tightness test 6
Commissioning 7
Maintenance/Removal 8
Accessories 8
Technical data 9
Declarations of conformity 10
 ATEX legend 13
Logistics 13
Contact 14

Safety

Please read and keep in a safe place



Please read through these instructions carefully before installing or operating. Following the installation, pass the instructions on to the operator. This unit must be installed and commissioned in accordance with the regulations and standards in force. These instructions can also be found at www.docuthek.com.

Explanation of symbols

■, **1**, **2**, **3**... = Action

> = Instruction

Liability

We will not be held liable for damage resulting from non-observance of the instructions and non-compliant use.

Safety instructions

Information that is relevant for safety is indicated in the instructions as follows:

⚠ DANGER

Indicates potentially fatal situations.

⚠ WARNING

Indicates possible danger to life and limb.

! CAUTION

Indicates possible material damage.

All interventions may only be carried out by qualified gas technicians. Electrical interventions may only be carried out by qualified electricians.

Conversion, spare parts

All technical changes are prohibited. Only use OEM spare parts.

Changes to edition 08.23

The following chapters have been changed:

- Checking the usage
- Technical data
- Declarations of conformity

Checking the usage

Diaphragm gas meters BK-G1.6 to G25

Residential or commercial diaphragm gas meters BK for recording gas consumption values for the following gases:


- For measurements subject to statutory testing:
 - gases of the first to third gas families pursuant to EN 437:2021 and DVGW Code of Practice G260
 - hydrogen-natural gas mixtures
 - hydrogen (DVGW Code of Practice G260 (09/2021), 5th gas family)
- For internal measurements not subject to statutory testing: nitrogen, air, inert gases

The meters are designed for use in air at normal atmospheric conditions. For use in other environments, please contact the manufacturer (see also page 4 (Installation)).

BK with integrated valve

Not suitable for highly contaminated gases, e.g. town gas.

Potentially explosive atmosphere

Diaphragm gas meters that are labelled with **CE** and  (see sticker or text on the index) are suitable for operation in potentially explosive atmospheres, see page 10 (Declarations of conformity).

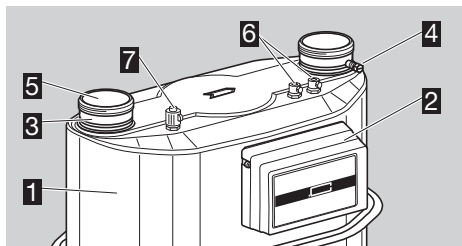
- For using gas meters in potentially explosive atmospheres, check the appropriate Ex marking, see page 9 (Technical data).

The meter function is only guaranteed when used under the specified operating conditions – see page 9 (Technical data). Any other use is considered as non-compliant.

Type code

Code	Description
BK-G	Diaphragm gas meter
	Flow rate
1.6	0.016–2.5 m ³ /h
2.5	0.025–4 m ³ /h
4	0.04–6 m ³ /h
6	0.06–10 m ³ /h
10	0.1–16 m ³ /h
16	0.16–25 m ³ /h
25	0.25–40 m ³ /h
M	Mechanical index
C	Chekker mechanical index
A	Absolute ENCODER index
E	Electronic index
	Temperature conversion:
T	mechanical
Te	electronic
TB	mechanical-electronic temperature conversion and pressure correction
TeB	electronic temperature conversion and pressure correction

Part designations



- Diaphragm gas meter BK
- Index with index plate
- Connectors
- Pressure test point to BS4161 (optional)
- Protective caps
- 2 x thermowells (optional)
- Pressure test point with sealing sleeve (optional)

Type label/Index plate

Please quote for all enquiries:

- The manufacturer's serial number **S/N** can be found at the bottom of the type label.
- The customer identification number is under the barcode.
- Indicated volume:
 - V: volume at metering conditions
 - V_{tb}: converted volume to base temperature t_b
 - V_b: converted volume to base conditions (pressure and temperature)

General:

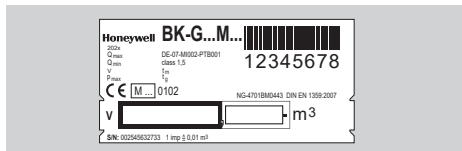
Conformity mark (example)

-  M24 0102

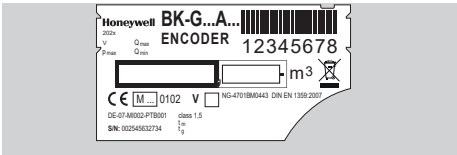
M24: Metrology mark and year (YY)
0102: Number of the notified body (in this case for PTB)

- In some cases, more than one number may be listed for the notified or approved bodies.
- Elster labels its meters for Great Britain and Northern Ireland with the CE mark in accordance with the current statutory regulation.
- The illustrations below are examples.

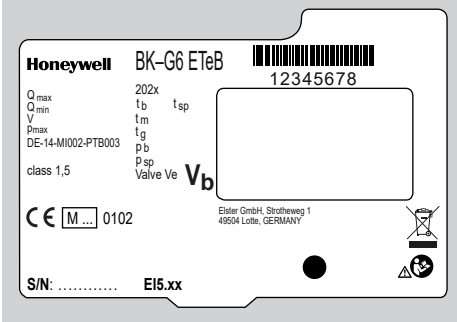
BK-G...M...



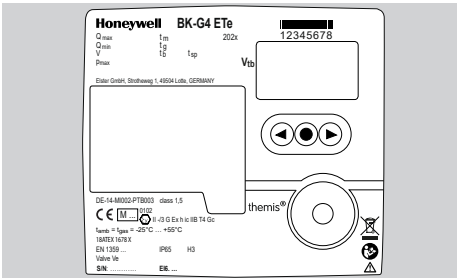
BK-G...A... with Absolute ENCODER index



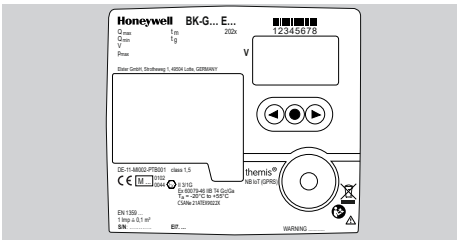
BK-G...EteB with index EI5.02, EI5.14, EI5.15



BK-G...E, BK-G...Ete with index EI6



BK-G...E, BK-G...Ete with index EI7



BK-G...E...

The following data is not necessarily specified on the type label/index plate, but can be called up in the menu:

- specified centre temperature t_{sp} (for meters with temperature conversion only),
- EN 1359 registration number (if available),
- firmware version.

- ▷ A number of variants are available for the electronic indexes. The Elx.xx ID of the index variant can be found at the bottom of the type label or on the index cover next to the serial number S/N.



EI6. ...

15 AT

Further information can be found in the supplementary operating instructions of the relevant index.

Diaphragm gas meters with integrated valve



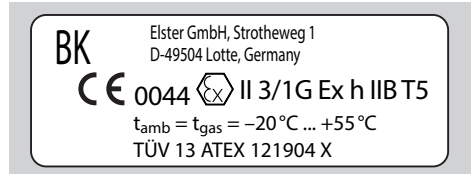
Valve variants:

Ve = bi-stable valve with electronic flow rate testing (with electronic index EI)

EX identification

BK-G...M, BK-G...C, BK-G...MT, BK-G...CT

Category 1 devices



Use as follows:

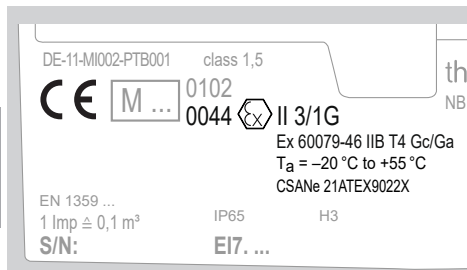
Category, internal: 3 (Zone 2), external: 1 (Zone 0).
Type of atmosphere: gases, hazes and vapours.
For the ambient and gas temperatures of the ATEX Zones, see illustration.

Category 2 devices



Use as follows:

Category, internal: none, external: 2 (Zone 1).
Type of atmosphere: gases, hazes and vapours.



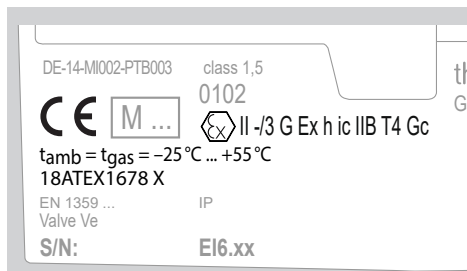
Use as follows:

Category, internal: 3 (Zone 2), external: 1 (Zone 0).

Type of atmosphere: gases, hazes and vapours.

For the ambient and gas temperatures of the ATEX Zones, see illustration.

BK-G...Ete with EI6



Use as follows:

Category, internal: none, external: 3 (Zone 2).

Type of atmosphere: gases, hazes and vapours.




Installation

⚠ WARNING

Please observe the following to ensure that neither persons nor the gas meter are damaged during installation and operation:

- Note the max. allowable operating pressure p_{max} and measuring range Q_{max} , see page 2 (Type label/Index plate).
- Note the permitted ambient temperature t_m and gas temperature t_g , see page 2 (Type label/Index plate) or page 9 (Technical data).
- The gas meters are certified for mechanical environments pursuant to Class M1 of Directive 2014/32/EU. When installed, the meters must not be subject to permanent vibration such as that caused by machines in the vicinity. In case of doubt, vibration isolation must be provided. For gas meter versions BK...A and BK...E, Class E2 for electromagnetic environments also applies.
- The dangers of chemical reactions between gas meter parts and the chemical substances in the environment are to be discussed by the manufacturer and the operator and must be eliminated.
- When installing the diaphragm gas meter BK with integrated valve, make sure that no dirt particles get into the meter and thus into the valve.
- The yellow sealing sleeve protects the pressure test point on the gas meter. It may only be opened for connecting a pressure measuring line.
- Use seals made from tested materials. Elastomer seals or asbestos-free flat seals from Elster are recommended.
- Only use the seals once.
- For meters resistant to high temperatures, only use seals tested to be resistant to high temperatures.
- ▷ The high temperature resistance is tested exclusively under EN 1359 at 100 mbar, even if the operating pressure p_{max} is specified as higher.
- For installation and operation, note the applicable national regulations and the directives of the gas supply company. For Germany, the valid DVGW Code of Practice G600 (DVGW-TRGI) applies.
- Avoid subjecting the unit to mechanical stress and prevent damage. Gas meters must be installed without any mechanical stress, preferably only by suspending them on the connectors. When using additional clamps, it must be ensured that no lateral forces act on the gas meter. These can be avoided by using flexible or supple connection lines, for instance.

Meters with marking

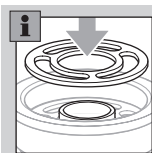
- Work on meters and the installation of meters which are marked with  and are installed in potentially explosive atmospheres may only be carried out by persons with appropriate qualifications.
 - The gas meter marked with  must be included in the equipotential bond when being installed in a potentially explosive atmosphere, e.g. by connecting it to a grounded pipeline. Installation must be carried out in accordance with EN 60079-14.
 - The gas meter marked with  must be protected from falling parts.
 - The non-metallic housing of the EI7 may generate an ignition-capable level of electrostatic discharge. Therefore, the device shall not be installed in a location where the external conditions are conducive to the build-up of electrostatic charge on such surfaces. This is particularly important if the device is installed in a Zone 0 location.
- ▷ If the calibration seal has been damaged or removed, the gas meter is no longer approved for measurements which are subject to statutory testing.
 - ▷ If the gas meter is stored or installed outdoors, protect the site against rain. Condensing humidity is permitted.
 - ▷ Meters which are marked with H3 are suitable for installation outdoors without additional protection.

1 Remove protective caps.

- ▷ Installation in the vertical position: connectors must be pointing upwards.
- ▷ Note direction of flow (arrow).
- ▷ The gas meter must not be in contact with masonry or other parts.
- ▷ Ensure that there is sufficient installation space.
- ▷ Ensure unobstructed view of the index.
- ▷ The seal faces on the screw unions must be clean and damage-free.
- ▷ Ensure that the seal is correctly seated.

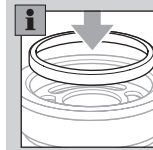
Co-axial meters:

- ▷ The seal must be centred over the internal diameter.



- ▷ When using an elastomer seal, always use a pressure ring (shape A).

- ▷ Note the installation position of the pressure ring. The inner beaded edge must point upwards.




- ▷ Replace damaged pressure rings when replacing the meter.

Co-axial and two-pipe meters:

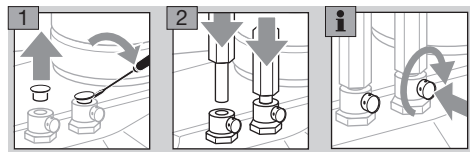
- ▷ For the compression of seals and the resulting tightening torques for the screw unions, the seal manufacturers' specifications must be observed. Tightening torques for the recommended flat seals in conjunction with screw connectors pursuant to DIN 3376-1 and 3376-2, see www.docuthek.com → Elster-Instromet → Products → Gas measuring devices → Diaphragm meters → Ergänzung für Betriebsanleitung BK, Verschraubungen und Anzugsmomente für BK-G1,6 bis BK-G25 (Supplement to BK operating instructions, Screw unions and tightening torques for BK-G1.6 to BK-G25) (D).

2 Install the gas meter free of mechanical stress.

- ▷ If a pulse transmitter IN-Z6x is used for pulse tapping on the gas meter marked with  – see Data sheet for pulse transmitter IN-Z6x (D, GB) → www.docuthek.com → Elster-Instromet → Products → Gas measuring devices → Diaphragm meters → Pulse transmitter IN-Z6x and the standard EN 60079-14 (Explosive atmospheres).

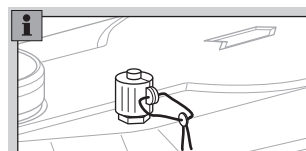
Temperature test point

- ▷ Temperature sensors can be inserted into the thermowells for measuring the gas temperature in the meter housing.



- 3 Secure each of the temperature sensors using the capstan screw provided.

Pressure test point on housing (optional)

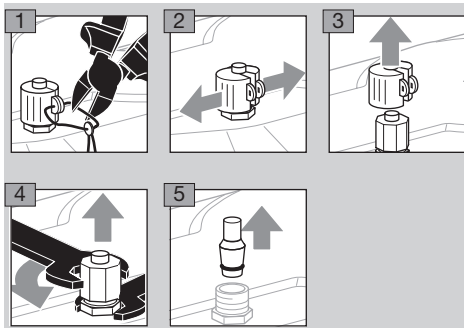


Connecting the piping

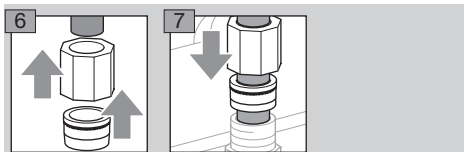
⚠ WARNING

In order to ensure that the gas meter is tight:

- The pressure test nipple must not be twisted, bent, or otherwise manipulated.
 - When installing, always secure the pressure test nipple using a suitable spanner.
- ▷ Functional safety and reliability are ensured only if the material combination of the screw connector and the pressure line are inter-matched.
- ▷ Only use the olive and the attached union nut supplied. The olive is secured to the sealing sleeve.
- ▷ When re-ordering, use original Parker EO progressive ring fittings PSR/DPR.



- ▷ Use corrosion-resistant, seamless precision steel tube pursuant to DIN EN 10305-4 (external diameter 6 mm, material E235 = 1.0308). For other materials, use a suitable adapter and note the Parker/EO recommendations.
- ▷ Install pipes free of mechanical stress.



- 8** Screw on the union nut by hand as far as it will go.
- ▷ At the same time, press the end of the pipe firmly against the stop.
- 9** Mark the position of the union nut and tighten with about 1½ turns.

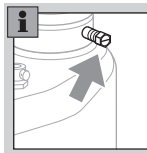


- ▷ When reinstalling, the union nut will be turned to the original position and then further tightened through approx. 30°.

- 10** Once the installation and tightness test are complete, see page 6 (Tightness test), protect the pressure test point against external access with the sealing sleeve and the seal.

Pressure test point on outlet connector (optional)

BS4161-compliant pressure test nipple



- ▷ Use a 10 mm spanner to release/tighten the test point screw.
- ▷ The test nipple is secured to prevent it turning with the screw.

Opening the test nipple

- 1** Remove the screw from the test nipple completely.
- ▷ The gas connection is open.

Closing the test nipple

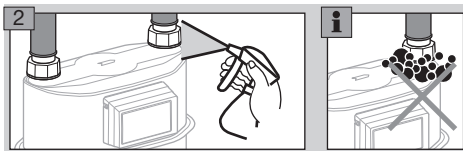
- 1** Insert the screw by hand as far as possible.
- 2** Tighten the screw with a torque of 3 Nm + 0.5 Nm.
- 3** Check for tightness, see page 6 (Tightness test).

⚠ WARNING

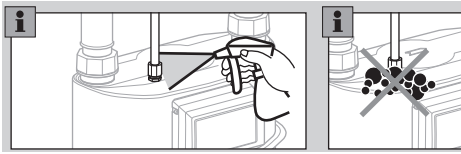
If the test nipple has unexpectedly come loose, the gas meter must be regarded as damaged and must be replaced.

Tightness test

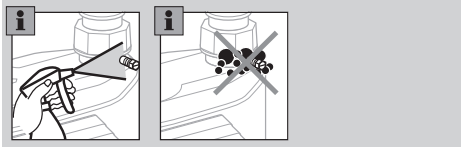
- ▷ Check the pipework for leaks prior to installation of the gas meter, in case the pipework is tested with a greater test pressure than the max. allowable operating pressure p_{max} for the gas meter. Otherwise, the installed gas meter may be damaged.
- ▷ If a valve is integrated in the diaphragm gas meter BK, see page 3 (Diaphragm gas meters with integrated valve), this must be opened for the tightness test.
- ▷ Ensure the customer's consumers are closed.
- 1** Apply the test pressure slowly to the gas meter.



- ▷ If a pressure measuring line has been retrofitted to the diaphragm gas meter, check this connection for tightness.



- ▷ If the BS4161-compliant test nipple on the meter has been opened and then closed again, check this connection for tightness.



- 3** After the tightness test, slowly vent the gas meter.
- 4** If a pressure measuring line has been retrofitted to the diaphragm gas meter, protect the pressure test point against external access with a sealing sleeve and a seal.


Commissioning

Once the tightness test has been successfully completed, the gas meter is ready for operation.

- ▷ Slowly open the manual valve.

Interfaces


Diaphragm gas meters BK are equipped with different interfaces, depending on the index version. Only original Elster spare parts may be used in the following cases:

- if devices are marked with ,
- if metrological data subject to statutory control is transferred via the interface.
- ▷ For statutory, metrological use, add-on components must be sealed. Permitted accessories, see page 8 (Accessories).

BK-G...M with mechanical index

For pulse tapping, the pulse transmitter IN-Z6x can be connected. For further information regarding usage and the interface –see Data sheet for pulse transmitter IN-Z6x → www.docuthek.com → Elster-Instromet → Products → Gas measuring devices → Diaphragm meters → Pulse transmitter IN-Z6x.

⚠ WARNING

The following safety instructions apply for meters which are marked with  and fitted with a pulse transmitter IN-Z6x:

- Only for connection to intrinsically safe electrical circuits, see page 9 (Technical data).
- If the intrinsically safe electrical circuit is grounded from a technical-safety point of view, the intrinsically safe equipotential bond must cover the entire area of installation.
- EN 60079-14 is to be noted when installing pulse transmitters.
- For a possible connection of two (types IN-Z61, IN-Z63) or three (IN-Z64) intrinsically safe circuits, the circuits must be galvanically connected to each other for safety purposes; EN 60079-14 must be given due consideration.
- The intrinsically safe electrical circuits of pulse transmitters IN-Z61 and IN-Z64 are considered to be grounded at voltages > 10 V, if the plug connector housings are connected to the ground potential.
- The intrinsically safe electrical circuits of pulse transmitters IN-Z61, IN-Z62 and IN-Z65 are to be considered as non-grounded.

BK-G...A with Absolute ENCODER AE3, AE5 and communication module ACM

If the diaphragm gas meter BK-G...A is fitted with communication module ACM, you can find further information ...


- for commissioning in the Communication module ACM M-BUS WIRE or ACM SCR+ WIRE... operating instructions (D/GB/SK/NL) → www.docuthek.com → Elster-Instromet → Products → Smart metering → ACM: communication modules.
- on the protocols in the corresponding documents at www.docuthek.com → Elster-Instromet → Products → Smart metering → AE: protocol variants.

BK-G...E, BK-G...Ete(B) with electronic index

For further commissioning of diaphragm gas meters with electronic index –see the operating instructions of the respective electronic indexes → www.docuthek.com → Elster-Instromet → Products → Smart metering → Electronic index.

BK-G... with RFID passive tag

⚠ WARNING

The following conditions apply to meters marked with  and fitted with an RFID passive tag:

- Under standard EN 60079-14, they must not be used in an environment with high electromagnetic fields with an effective value of over 1 A/m or 3 V/m.

- The RFID devices required for reading must be certified separately for the appropriate explosion-hazard areas or may only be used in safe areas.
- The transmission rating of the RFID readers must not exceed the maximum limits set out in EN 60079-14.

Diaphragm gas meters BK with integrated valve

In the event that the diaphragm gas meter BK is fitted with an integrated valve, see page 3 (Diaphragm gas meters with integrated valve) for designation, the gas supply can be connected or disconnected remotely.

Unless otherwise agreed, the valve is open on delivery as standard.

WARNING

- The grid operator is responsible for the safe remote shut-down and restart of the diaphragm gas meter.
- The integrated valve does not assume the functions of a safety shut-off valve.

- ▷ Should the diaphragm gas meter BK be ordered with a valve, but without control electronics to be complemented by a third party, the technical data of the control interface is to be requested from Elster GmbH and observed.
- ▷ The manufacturer of the control electronics is responsible for creating the conditions required for safe operation of the valve. Instructions on commissioning and operation are to be taken from the operating instructions for the control electronics.

... with valve variant Ve

- ▷ Notes on the function can be found in the operating instructions of the electronic index. Technical data, see page 9 (Technical data).

Maintenance/Removal

Gas meters BK-G1.6 to 25 from Elster are maintenance-free (constraints for BK-G...E...).

- ▷ When used for custody transfer measurements, recalibration must be carried out in accordance with national directives.
- ▷ If the screw unions are loosened for maintenance work or retesting, replace the seals.
- ▷ After the gas meter has been removed, immediately close the connectors with protective caps in order to prevent ingress of dirt particles.
- ▷ For meters with electronic indexes (BK-G...E...), it may be necessary to change the battery, see “Operating instructions for operators and installers” for the corresponding electronic index.

WARNING

A certain amount of gas may remain in the gas meter. Taking into consideration the risk of explosion, it is important to adopt safety measures, e.g.:

- Following removal of the gas meter, purge it thoroughly with inert gas.
- For transporting the gas meter with gas residue, use a vehicle with an open or a ventilated loading area.
- The indexes must not be opened in an explosion-hazard area even for maintenance and repair. For opening the service cover on the electronic index, e.g. to change the battery, see “Operating instructions for operators and installers” for the corresponding electronic index.
- Meters which are installed in a potentially explosive atmosphere may only be cleaned using a damp cloth to avoid static electricity charge.

Accessories

We recommend using Elster GmbH accessories only.

Pulse transmitters of the IN-Z6x series

- ▷ Also for devices which are marked with 

IN-Z61 (Part No. 32319615)

Retrofit kit with connection cable –

Order No. 72910109

Retrofit kit without connection cable –

Order No. 72910114

IN-Z62 (Part No. 32319616)

Shipping unit – Order No. 32447303

IN-Z63 (Part No. 32319617)

Retrofit kit – Order No. 72910110

Retrofit kit with cable socket – Order No. 72910112

IN-Z64 (Part No. 32319618)

Retrofit kit – Order No. 72910117

IN-Z65 (Part No. 32319762)

Retrofit kit – Order No. 72910180

IN-Z68 Part/Order No. 32320278

Interface parameters, see page 9 (Technical data).

- ▷ As regards explosion protection, pulse transmitters IN-Z6x are classified as simple electrical apparatus and must thus not be marked.

Communication modules ACM for AE3 to AE5

For AE3:

- ACM M-Bus WIRE (Order No. 32906432)
- ACM SCR+ WIRE (Order No. 32906465)
- ACM IZAR RADIO KOMPAKT I-Key (Order No. 04406012)

For AE3 and AE5:

- ACM 5.1 ECO Wire (Order No. 32320346)
- ACM 5.2 M-Bus Wire (Order No. 32320347)
- ACM 5.5 SCR Wire (Order No. 32320348)

Communication modules for meters with explosion protection

Meters which are marked with \odot may only be retrofitted with communication modules certified in accordance with 2014/34/EU and which correspond to the appropriate interface parameters (see page 9 (Technical data)).

Technical data

Diaphragm gas meter BK

Gas type: natural gas, town gas, propane and butane, as gases of the first to third families pursuant to DIN EN 437:2003 (DVGW Code of Practice G260). The following technical data can be found on the type label/index plate:

- max. allowable operating pressure p_{max}
- measuring range: Q_{min}/Q_{max}
- max. allowable ambient temperature range t_m
- max. allowable gas temperature range t_g^*
- cyclic volume V

For meters with temperature conversion only:

- base gas temperature t_b
- specified centre temperature t_{sp}^{**}

Only for diaphragm gas meters BK...ETeB:

- base pressure p_b
- assumed (inlet) pressure p_{sp}

Other technical data:

- transitional flow rate $Q_t = 0.1 \times Q_{max}$
- max. allowable storage temperature range: -25 to +60°C
- mechanical environment class: M1
- electromagnetic environment class: E2
- high temperature resistance: tested pressure 100 mbar (EN 1359), mark "T"
- ▷ The test pressure and p_{max} do not necessarily have to be the same.
- ▷ Observe installation conditions! See page 4 (Installation).

Supplementary notes:

- * If operated within the gas temperature range, the measurement error still lies within the required error limits. If no gas temperature t_g is specified on the index plate, the following applies: $t_g = t_m$.
- ** The specified centre temperature t_{sp} of the BK-G...E... series meters is not stated on the index plate, but can be called up in the display using the menu.

Diaphragm gas meters BK with pressure test point

Pressure test point: 24° olive fitting to EN ISO 8434-1, L6 x M12 x 1.5-St.

Diaphragm gas meters BK with explosion protection

For meters of Category 1 which are marked with \odot , the ambient temperature t_{amb} and the gas temperature t_{gas} are limited to a maximum range between -20°C and +55°C. In this case, the permitted temperatures must be taken from the ATEX marking.

- ▷ Ex Zones with hydrogen (H2) or hydrogen-natural gas mixtures (H2/NG):
H2: explosion group IIC
H2/NG with 30 mol% H2: explosion group IIB

The following parameters apply for meters BK-G...M, BK-G...C, BK-G...MT, BK-G...CT with pulse transmitter IN-Z6x:

IN-Z61, IN-Z62, IN-Z63, IN-Z64, IN-Z65:

$U_i = 30 V$
 $I_i = 50 mA$
 $P_i = 250 mW$
 C_i, L_i negligible

IN-Z68:

$U_i = 8 V$
 $I_i = 10 mA$
 $P_i = 250 mW$
 C_i, L_i negligible

Diaphragm gas meters BK with integrated valve Ve

Opening time incl. flow rate measurement: < 2 min.

Opening and closing times: approx. 5 s (max. 15 s).

Max. operating pressure for valve operation: 100 mbar.

- ▷ The operating pressure of the gas meter can be higher if necessary.

Leakage flow (closed): max. 1 l/h up to 100 mbar.

Declarations of conformity

Scans of all valid Declarations of conformity – see www.docuthek.com – Elster-Instromet

Diaphragm gas meters BK-G...M, BK-G...C, BK-G...MT, BK-G...CT (without ATEX declaration)

Honeywell



EU-Konformitätserklärung EU Declaration of Conformity

Produkt Product	Gaszähler / Gaszähler mit eingebauter Temperaturumwertung Gas meter / Gas meter with integrated temperature conversion	
Typ, Ausführung Type, model	BK-G1,6 M – BK-G25 M BK-G1,6 MT – BK-G25 MT	BK-G1,6 C – BK-G25 C BK-G1,6 CT – BK-G25 CT
Produkt-Kennzeichnung Product marking	 M... 0102 DE-07-MI002-PTB001 / DE-07-MI002-PTB002	
EU-Richtlinien EU Directives	2014/32/EU – MID	2011/65/EU – RoHS (mit IN-Z6... / with IN-Z6...)
Normen Standards	DIN EN 1359:2007 (EN 1359:1998 + A1:2006) EN 1359:2017	
EU-Baumusterprüfung EU-type examination	DE-07-MI002-PTB001, Rev. 12 / DE-07-MI002-PTB002, Rev. 12 (MID - 2014/32/EU Anhang II Modul B / Annex II module B) Physikalisch-Technische Bundesanstalt (PTB) (National Metrological Institute) Notifizierte Stelle / Notified Body 0102	
Überwachungsverfahren Surveillance procedure	2014/32/EU Anhang II, Modul D / 2014/32/EU Annex II, module D Physikalisch-Technische Bundesanstalt (PTB) (National Metrological Institute) Notifizierte Stelle / Notified Body 0102 Zertifikat / certificate: DE-M-AQ-PTB025	

Wir erklären als Hersteller:

Die entsprechend gekennzeichneten Produkte erfüllen die Anforderungen der aufgeführten Richtlinien und Normen. Sie stimmen mit dem geprüften Baumuster überein. Die Herstellung unterliegt dem genannten Überwachungsverfahren.

We declare as manufacturer:

Products labelled accordingly meet the requirements of the listed directives and standards. They correspond to the tested type samples. The production is subject to the stated surveillance procedure.

Unterzeichnet für und im Namen der Elster GmbH – Signed for and on behalf of Elster GmbH

Lotte / Stará Turá, 2024-06-03

DocuSigned by:

A9E1AE9FDEEF417...
Michael Orme
Leiter Entwicklung
Director R&D

DocuSigned by:

98DDA259719245E...
Ulrich Clasemann
Geschäftsführer Standort Lotte
Managing Director, Lotte site

DocuSigned by:

A430E6043FC04BA...
Milan Slavik
Betriebsleiter Standort Stará Turá
Plant Director, Stará Turá site

Elster GmbH, Strotheweg 1, 49504 Lotte, DEUTSCHLAND / GERMANY
Sitz / Registered Office: Steinern Str. 19-21, 55252 Mainz-Kastel DEUTSCHLAND / GERMANY

03252001 / DIS 1000330463-000-14 / ZSD



EU - Konformitätserklärung

EU Declaration of Conformity

Produkt Product	Gaszähler / Gaszähler mit eingebauter Temperaturumwertung Gas meter / Gas meter with integrated temperature conversion		
Typ, Ausführung Type, model	BK-G1,6 M – BK-G25 M BK-G1,6 MT – BK-G25 MT	BK-G1,6 C – BK-G25 C BK-G1,6 CT – BK-G25 CT	
Produkt-Kennzeichnung Product marking	M... 0102 II -/2 G Ex h IIB T5 DE-07-MI002-PTB001 / DE-07-MI002-PTB002		
EU-Richtlinien EU Directives	2014/32/EU – MID	2014/34/EU – ATEX	2011/65/EU – RoHS ¹
Normen Standards	DIN EN 1359:2007 (EN 1359:1998 + A1:2006) EN 1359:2017	EN ISO 80079-36:2016 EN ISO 80079-37:2016 EN 60079-0:2012+A11:2013 EN 60079-11:2012	
EU-Baumusterprüfung EU-type examination	DE-07-MI002-PTB001, Rev.12 / DE-07-MI002-PTB002, Rev.12 (MID - 2014/32/EU Anhang II Modul B / Annex II module B) Physikalisch-Technische Bundesanstalt (PTB) (National Metrological Institute) Notifizierte Stelle / Notified Body 0102		
Prüfungen Tests	Konformitätsaussage TÜV Nord Statement of conformity TÜV Nord TÜV 11 ATEX 090370 X Ausgabe 01 (Edition 01)		
Überwachungsverfahren Surveillance procedures	2014/32/EU Anhang II, Modul D / 2014/32/EU Annex II, module D Physikalisch-Technische Bundesanstalt (PTB) – (National Metrological Institute) Notifizierte Stelle / Notified Body 0102 Zertifikat / certificate: DE-M-AQ-PTB025		
Konformitätsbewertungsverfahren Conformity assessment procedure	2014/34/EU Anhang VIII, Modul A 2014/34/EU Annex VIII, module A		

¹ RoHS-Konformität nur anwendbar für Zähler mit angebaute elektronischen Komponenten (z.B. IN-Z6..., RFID-Passiv-Transponder)
RoHS compliance only applicable for meters with attached electronic components (e.g. IN-Z6..., RFID passive tag)

Wir erklären als Hersteller:

Die entsprechend gekennzeichneten Produkte erfüllen die Anforderungen der aufgeführten Richtlinien und Normen. Sie stimmen mit dem geprüften Baumuster überein. Die Herstellung unterliegt dem genannten Überwachungsverfahren.

In our capacity as manufacturer, we hereby declare:

Products labelled accordingly meet the requirements of the listed directives and standards. They correspond to the tested type sample. The production is subject to the stated surveillance procedure.

Unterzeichnet für und im Namen der Elster GmbH – Signed for and on behalf of Elster GmbH

Lotte / Stará Turá, 2024-06-03

DocuSigned by:

ASE1AE9FDEEF417

Michael Orme

Leiter Entwicklung

Director R&D

DocuSigned by:

98DA259719045E...

Ulrich Clasemann

Geschäftsführer Standort Lotte

Managing Director, Lotte site

DocuSigned by:

A305B043FC04BA...

Milan Slavik

Betriebsleiter Standort Stará Turá

Plant Director, Stará Turá site

Elster GmbH, Strothweg 1, 49504 Lotte, DEUTSCHLAND / GERMANY

Sitz / Registered Office: Steinern Str. 19-21, 55252 Mainz-Kastel DEUTSCHLAND / GERMANY

03252002 / DIS 1000330478-000-14 / ZSD



EU-Konformitätserklärung

EU Declaration of Conformity

Produkt Product	Gaszähler (mit Absolut-ENCODER) Gas meter (with Absolute ENCODER) Gaszähler mit eingebauter Temperaturumwertung (mit Absolut-ENCODER) Gas meter with integrated temperature conversion (with Absolute ENCODER)		
Typ, Ausführung Type, model	BK-G1,6 A – BK-G25 A BK-G1,6 AT – BK-G25 AT		
Produkt-Kennzeichnung Product marking	M... 0102 DE-07-MI002-PTB001 / DE-07-MI002-PTB002		
EU-Richtlinien EU Directives	2014/32/EU – MID	2014/30/EU – EMC	2011/65/EU – RoHS
Normen Standards	DIN EN 1359:2007 (EN 1359:1998 + A1:2006) EN 1359:2017	IEC 61000-6-2:2005 IEC 61000-6-3:2006 +A1:2010	
EU-Baumusterprüfung EU-type examination	DE-07-MI002-PTB001, Rev.12 / DE-07-MI002-PTB002, Rev.12 (MID - 2014/32/EU Anhang II Modul B / Annex II module B) Physikalisch-Technische Bundesanstalt (PTB) (National Metrological Institute) Notifizierte Stelle / Notified Body 0102		
Prüfungen Tests	Quinel AG: No. E2176-05a-16 (ACM5.1 ECO) No. E2176-05b-16 (ACM5.2 MBUS) No. E2176-05c-16 (ACM5.3 SCR) No. E2176-05d-16 (ACM5.4 LUX) No. E2176-05a-18 (ACM5.5 SCR)		
Überwachungsverfahren Surveillance procedures	2014/32/EU Anhang II, Modul D / 2014/32/EU Annex II, module D Physikalisch-Technische Bundesanstalt (PTB / National Metrological Institute) Notifizierte Stelle / Notified Body 0102 Zertifikat / certificate: DE-M-AQ-PTB025		

Wir erklären als Hersteller:

Die entsprechend gekennzeichneten Produkte erfüllen die Anforderungen der aufgeführten Richtlinien und Normen. Sie stimmen mit dem geprüften Baumuster überein. Die Herstellung unterliegt dem genannten Überwachungsverfahren.

We declare as manufacturer:

Products labelled accordingly meet the requirements of the listed directives and standards. They correspond to the tested type sample. The production is subject to the stated surveillance procedure.

Unterschiedet für und im Namen der Elster GmbH – Signed for and on behalf of Elster GmbH

Lotte / Stará Turá, 2024-06-03

DocuSigned by:

 ASE1A89FC83F417

Michael Orme
Leiter Entwicklung
Director R&D

DocuSigned by:

 980A256711245E

Ulrich Clasemann
Geschäftsführer Standort Lotte
Managing Director, Lotte site

DocuSigned by:


 A43DB8C4FC5A8A

Milan Slavik
Betriebsleiter Standort Stará Turá
Plant Director, Stará Turá site

Elster GmbH, Strotheweg 1, 49504 Lotte, DEUTSCHLAND / GERMANY
Sitz / Registered Office: Steinern Str. 19-21, 55252 Mainz-Kastel DEUTSCHLAND / GERMANY

03252003 / DIS 1000332599-000-13 / ZSD

ATEX legend

-  = Marking of explosion protection
 II = Equipment group II for general industries (with the exception of mines)
 -/2 = Category:
 internal: none
 external: Category 2 (Zone 1)
 -/3 = Category:
 internal: none
 external: Category 3 (Zone 2)
 3 = Category 3 (Zone 2)
 3/1 = Category:
 internal: Category 3 (Zone 2)
 external: Category 1 (Zone 0)
 G = Type of atmosphere: gases, hazes and vapours
 Ex h = "Constructional safety" explosion protection type
 ic = Type of ignition protection: intrinsic safety for Zone 2
 IIB, IIC = Explosion group for gases
 T1 = Temperature class: maximum allowable surface temperature 450°C
 T4 = Temperature class: maximum allowable surface temperature 135°C
 T5 = Temperature class: maximum allowable surface temperature 100°C
 Gc = Equipment protection level for Zone 2
 Ta = Ambient temperature
 t_{amb} = Ambient temperature in acc. with Directive 2014/34/EU
 t_{gas} = Gas temperature in acc. with Directive 2014/34/EU

Logistics

Transport

Diaphragm gas meters are always to be transported in the upright position. On receipt of the product, check that the delivery is complete, see page 2 (Part designations). Report any transport damage immediately.

Storage

Diaphragm gas meters are always to be stored in the upright position and in a dry place. Ambient temperature: see page 9 (Technical data).

Disposal

Meters with electronic components:

WEEE Directive 2012/19/EU – Waste Electrical and Electronic Equipment Directive



At the end of the product life, dispose of the packaging and product in a corresponding recycling centre. Do not dispose of the unit with the usual domestic refuse. Do not burn the product.

On request, old units may be returned carriage paid to the manufacturer, see page 14 (Contact), in accordance with the relevant waste legislation requirements.

Contact

Honeywell

Germany

Elster GmbH
Strotheweg 1
49504 Lotte
Tel. +49 541 1214-0
Fax +49 541 1214-370
customerfirst@honeywell.com
www.elster-instromet.com

United Kingdom

Elster Metering Limited
Opus House, Priestly Court
Staffordshire Technology Park
Stafford, ST18 0LQ
stafford.enquiries@honeywell.com
www.elster-instromet.com

Ireland

Active Energy Control Ltd.
Unit 4, Clare Marts
Quin Road
Ennis, Co. Clare
Tel. +353 65 6840600
Fax +353 65 6840610
info@aec.ie
www.aec.ie