

7800 SERIES 203765 Remote Mounting Bracket

Application

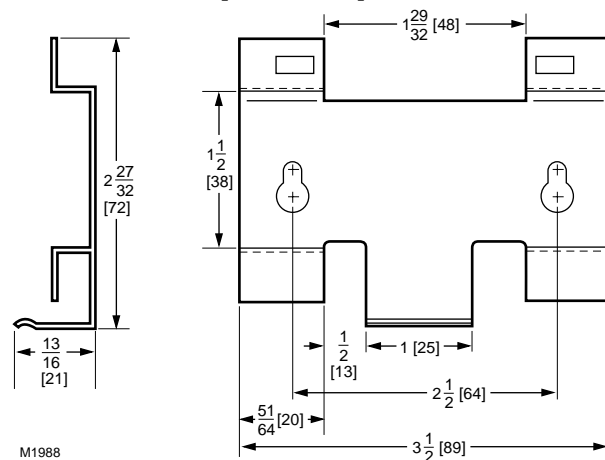
The Honeywell 7800 SERIES is a microprocessor-based integrated burner control for automatically fired gas, oil, coal or combination fuel single-burner applications. The 7800 SERIES is programmed to provide a level of safety, functional capability and features beyond the capacity of conventional controls. Functions provided by the 7800 SERIES include automatic burner sequencing, flame supervision, system status indication, system or self diagnostics and troubleshooting.

The Remote Mounting Bracket provides the capability for remotely mounting a Keyboard Display Module.

DIMENSIONS: See Fig. 1.

WEIGHT: 1.2 ounces unpacked.

Fig. 1—203765 Remote Mounting Bracket dimensions in inches [millimeters].



MOUNTING THE KEYBOARD DISPLAY MODULE ON THE REMOTE MOUNTING BRACKET (See Fig. 2).

1. Use the Remote Mounting Bracket as a template.

Fig. 2—Mounting the Keyboard Display Module on the Remote Mounting Bracket.



Mark the two screw locations and drill the pilot holes.

2. Mount the Remote Mounting Bracket by securing the two no. 6 screws.

3. Mount the Keyboard Display Module by aligning the two interlocking ears with the two mating slots on the Remote Mounting Bracket.

4. Insert the two interlocking ears with the two mating slots and push on the lower corners of the Keyboard Display Module to secure the Keyboard Display Module to the Remote Mounting Bracket.

**Residential and
Building Controls Division**

Honeywell Inc.
1985 Douglas Drive North
Golden Valley, Minnesota 55422

**Residential and
Building Controls Division**

Honeywell Limited—Honeywell Limitée
740 Ellesmere Road
Scarborough, Ontario
M1P 2V9

Helping You Control Your World

