

## Assembly Numbers

**For these products, please order per the following product numbers:**  
 (configured products are those with alphanumeric text)

Burner Description	Configured Product Number		Burner Description	Configured Product Number
0.5 ft. APX Lineburner	0050 APX		7 ft. APX Lineburner	0700 APX
1 ft. APX Lineburner	0100 APX		8 ft. APX Lineburner	0800 APX
1.5 ft. APX Lineburner	0150 APX		9 ft. APX Lineburner	0900 APX
2 ft. APX Lineburner	0200 APX		10 ft. APX Lineburner	1000 APX
2.5 ft. APX Lineburner	0250 APX		11 ft. APX Lineburner	1100 APX
3 ft. APX Lineburner	0300 APX		12 ft. APX Lineburner	1200 APX
3.5 ft. APX Lineburner	0350 APX		13 ft. APX Lineburner	1300 APX
4 ft. APX Lineburner	0400 APX		14 ft. APX Lineburner	1400 APX
5 ft. APX Lineburner	0500 APX		15 ft. APX Lineburner	1500 APX
6 ft. APX Lineburner	0600 APX			

### Segment Choice Detail - Packaged Straight APX® Burners

Segment Name	Segment Description	Segment Choices (DEFAULT is shaded)	Segment Choice Description
FUEL	Type of fuel gas	BUT	Butane Gas
		NAT	Natural Gas
		PROP	Propane Gas
DRILLING (not valid for 0.5 ft. APX)	Type of drilling pattern	LP	Low pressure drilling
		STD	Standard drilling
MOUNTING OPTION	Type of burner mounting	CONT	Continuous flange burner mounting
		INDUCT	In-duct burner mounting
		SLOT	Slot fired burner mounting
GAS FLANGE	Type of threads on gas flange	ANSI	ANSI threaded
		ISO	ISO threaded
FLAME DETECTION (not valid for 0.5 ft. APX)	Type of flame detection system	FR	Flame rod
		SCANNER	UV Scanner provision
BLOWER VOLTAGE SELECTION	Type of blower desired	EB	External blower (EB adapter)
		NONE	No fan and no EB adapter
		230_460360	230/460-3-60 Combustion air fan
		380_400350	380/400V-3-50 Combustion air fan
		575360	575-3-60 Combustion air fan
FILTER &/OR SILENCER (not valid for 0.5 ft. APX)	Add air filter or silencer, if desired	FLTR	Air filter
		FLTSLNCR	Filter / silencer
		NONE	No filter or silencer

Segment Choice Detail continued on page 2900-A/P-2

## Assembly Numbers

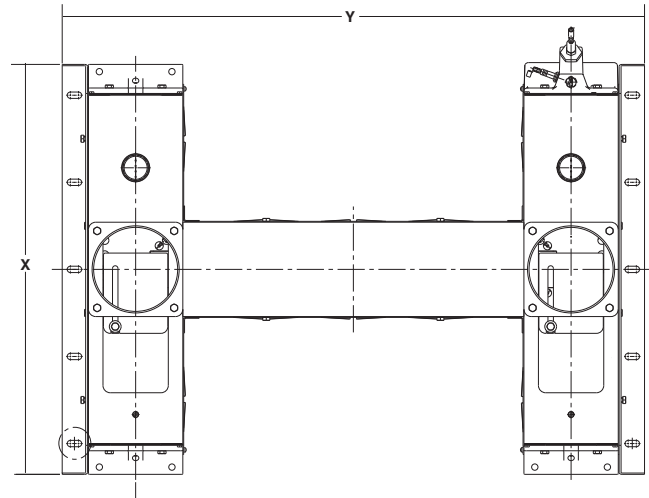
### Segment Choice Detail - Packaged Straight APX® Burners

Segment Name	Segment Description	Segment Choices (DEFAULT is shaded)	Segment Choice Description
PILOT ORIFICE	Type of pilot orifice, if desired	NONE	None selected
		38009_HC	High capacity orifice
		50431_VHC	Very high capacity orifice
SLOT FIRED MOUNTING TABS	Number of tabs required	0	Specify value
UNIVERSAL MOUNTING BRACKETS (not valid for 0.5 ft. APX)	Number of brackets required	0	Specify value
LEFT END PLATE/PILOT (See Page 2905 for left/right orientation)	Pilot end plate options- left end	FIG1_FR	Standard air bypass with flame rod
		FIG1_UV	Standard air bypass with UV scanner provision
		FIG2_FR	Flame rod end plate with flame rod
		FIG2_PLN	Flame rod end plate plain
		FIG2_SG	Flame rod end plate with sight glass
		FIG3_SIEP	Spark ignitor end plate
		FIG4_FR	Raw gas with flame rod
		FIG4_UV	Raw gas with UV provision
		FIG5_FR	In-duct end plate with flame rod
		FIG5_UV	In-duct end plate with UV provision
		FIG6_FR	Feed thru end plate with flame rod
		FIG6_UV	Feed thru end plate with UV provision
RIGHT END PLATE/PILOT (See Page 2905 for left/right orientation)	Pilot end plate options - right end	FIG1_FR	Standard air bypass with flame rod
		FIG1_UV	Standard air bypass with UV scanner provision
		FIG2_FR	Flame rod end plate with flame rod
		FIG2_PLN	Flame rod end plate plain
		FIG2_SG	Flame rod end plate with sight glass
		FIG3_SIEP	Spark ignitor end plate
		FIG4_FR	Raw gas with flame rod
		FIG4_UV	Raw gas with UV provision
		FIG5_FR	In-duct end plate with flame rod
		FIG5_UV	In-duct end plate with UV provision
		FIG6_FR	Feed thru end plate with flame rod
		FIG6_UV	Feed thru end plate with UV provision
CONTROL MOTOR (not valid for 0.5 ft. APX)	Type of control motor if desired	NONE	None selected
		W_BEL_LFS	CV valve with direct coupled motor and LFS (GP)
		W_BEL_MTR	CV valve with direct coupled motor (GP)
		W_CB_L	CV valve with CB&L
		W_CB_L_LFS	CV valve with CB&L and LFS
		W_MOD_LFS	CV valve with mod motor and LFS
		W_MOD_MTR	CV valve with CB&L and mod motor

## Assembly Numbers APX "H" Burners

For these products, please order per the following product numbers:  
(configured products are those with alphanumeric text)

Burner Description	Configured Product Number
1 foot by 1 foot APX H Lineburner	APX 0100X0100H
1 foot by 1.5 foot APX H Lineburner	APX 0100X0150H
1 foot by 2 foot APX H Lineburner	APX 0100X0200H
1 foot by 2.5 foot APX H Lineburner	APX 0100X0250H
2 foot by 1 foot APX H Lineburner	APX 0200X0100H
2 foot by 1.5 foot APX H Lineburner	APX 0200X0150H
2 foot by 2 foot APX H Lineburner	APX 0200X0200H
2 foot by 2.5 foot APX H Lineburner	APX 0200X0250H
3 foot by 1 foot APX H Lineburner	APX 0300X0100H
3 foot by 1.5 foot APX H Lineburner	APX 0300X0150H
3 foot by 2 foot APX H Lineburner	APX 0300X0200H
3 foot by 2.5 foot APX H Lineburner	APX 0300X0250H
3 foot by 3.5 foot APX H Lineburner	APX 0300X0350H



**Example: APX 0300X0100H**  
X = 36.24; Y = 22.12

### Segment Choice Detail - APX "H" Burners

Segment Name	Segment Description	Segment Choices (DEFAULT is shaded)	Segment Choice Description
FUEL CHOICE	Type of fuel	NAT	Natural Gas
		PROP	Propane Gas
DRILLING	Type of drilling	STD	Standard Drilling
MOUNTING OPTION	Type of burner mounting	INDUCT	Universal Mounting Brackets
		SLOT	Slot Mounting Tabs
GAS FLANGE	Type of gas flange	ANSI	Standard ANSI Flange
		ISO	ISO Flange
FLAME DETECTION	Type of flame detection device	FR	Flame Rod
		SCANNER	UV Scanner
PILOT ORIFICE	Type of pilot orifice	NONE	No adjustable orifice
		38009_HC	High Capacity Adjustable Orifice
		50431_VHC	Very High Capacity Adjustable Orifice

Continued on page 2900-A/P-4

## Assembly Numbers APX "H" Burners

### Segment Choice Detail - APX "H" Burners (continued)

Segment Name	Segment Description	Segment Choices (DEFAULT is shaded)	Segment Choice Description
TOP RIGHT END PLATE (POS 1)	End plate option	FIG1_FR	FIG1_FR Std Air Byp W/FR
		FIG1_UV	FIG1-UV Std Air Byp W/UV Prov
		FIG2_FR	FIG2_FR Flm Rod Plt W/FR
		FIG2_PLN	FIG2_PLN Flm Rod Plt Pln
		FIG2_SG	FIG2_SG Flm Rod Plt W/SG
		FIG3_SIEP	FIG3_SIEP Spark Ign End Plt
		FIG4_FR	FIG4_FR Raw Gas W/FR
		FIG4_UV	FIG4_UV Raw Gas W/UV Prov
		FIG5_FR	FIG5_FR Induct Plt W/FR
		FIG5_UV	FIG5_UV Induct Plt W/UV Prov
		FIG6_FR	FIG6_FR Fd Thru Plt W/FR
		FIG6_UV	FIG6_UV Fd Thru Plt W/UV Prov
BOTTOM RIGHT END PLATE (POS 2)	End Plate Option	FIG1_FR	FIG1_FR Std Air Byp W/FR
		FIG1_UV	FIG1-UV Std Air Byp W/UV Prov
		FIG2_FR	FIG2_FR Flm Rod Plt W/FR
		FIG2_PLN	FIG2_PLN Flm Rod Plt Pln
		FIG2_SG	FIG2_SG Flm Rod Plt W/SG
		FIG3_SIEP	FIG3_SIEP Spark Ign End Plt
		FIG4_FR	FIG4_FR Raw Gas W/FR
		FIG4_UV	FIG4_UV Raw Gas W/UV Prov
		FIG5_FR	FIG5_FR Induct Plt W/FR
		FIG5_UV	FIG5_UV Induct Plt W/UV Prov
		FIG6_FR	FIG6_FR Fd Thru Plt W/FR
		FIG6_UV	FIG6_UV Fd Thru Plt W/UV Prov
BOTTOM LEFT END PLATE (POS 3)	End Plate Options	FIG1_FR	FIG1_FR Std Air Byp W/FR
		FIG1_UV	FIG1-UV Std Air Byp W/UV Prov
		FIG2_FR	FIG2_FR Flm Rod Plt W/FR
		FIG2_PLN	FIG2_PLN Flm Rod Plt Pln
		FIG2_SG	FIG2_SG Flm Rod Plt W/SG
		FIG3_SIEP	FIG3_SIEP Spark Ign End Plt
		FIG4_FR	FIG4_FR Raw Gas W/FR
		FIG4_UV	FIG4_UV Raw Gas W/UV Prov
		FIG5_FR	FIG5_FR Induct Plt W/FR
		FIG5_UV	FIG5_UV Induct Plt W/UV Prov
		FIG6_FR	FIG6_FR Fd Thru Plt W/FR
		FIG6_UV	FIG6_UV Fd Thru Plt W/UV Prov

Continued on page 2900-A/P-5

## Assembly Numbers APX "H" Burners

### Segment Choice Detail - APX "H" Burners *(continued)*

Segment Name	Segment Description	Segment Choices (DEFAULT is shaded)	Segment Choice Description
TOP LEFT END PLATE (POS 4)	End Plate Options	FIG1_FR	FIG1-FR Std Air Byp W/FR
		FIG1_UV	FIG1_UV Std Air Byp W/UV Prov
		FIG2_FR	FIG2_FR Flm Rod Plt W/FR
		FIG2_PLN	FIG2_PLN Flm Rod Plt Pln
		FIG2_SG	FIG2_SG Flm Rod Plt W/SG
		FIG3_SIEP	FIG3_SIEP Spark Ign End Plt
		FIG4_FR	FIG4_FR Raw Gas W/FR
		FIG4_UV	FIG4_UV Raw Gas W/UV Prov
		FIG5_FR	FIG5_FR Induct Plt W/FR
		FIG5_UV	FIG5_UV Induct Plt W/UV Prov
		FIG6_FR	FIG6_FR Fd Thru Plt W/FR
		FIG6_UV	FIG6_UV Fd Thru Plt W/UV Prov
NUMBER OF UNIV MTG. BRKTS	Number of Universal Mounting Brackets	0	Specify value
EB ADAPTER	Adapter flange choice	NO	No adapter flange needed
		YES	Adapter flange needed

## Assembly Numbers

### Replacement Items & Accessories

Burner Size		0.5 ft.	1 ft. through 2 ft.	2.5 ft. through 15' ft.
		0050 APX	0100 APX - 0200 APX	0250 APX - 1500 APX
<b>Air Filter</b>		---	1042405	1042407
<b>Filter/Silencer</b>		---	1042401	1042403
<b>Replacement Foam Filter Element</b>		---	1042393	1042394
<b>ISO Flange</b>		---	48341	
<b>UV Adapter (wall mount)</b>		47157		
<b>Spark Ignitors</b>	For Fig. 1 pilot	18110		
	For Fig. 3 pilot	23739		
	For Fig. 5 pilot	47489		
	For Fig. 4 pilot	47232		
<b>Spark Ignitor (prior to 2/15/02) - quartz</b>		47489		
<b>Feed-thru Spark Ignitors</b> For Fig. 6 - INDUCT FEED THRU PILOT (order separately from burner)	12"	44652		
	18"	44653		
	24"	44653 or 44654		
	30"	44654 or 44655		
	36"	44655 or 44656		
<b>Flame Rod</b>	Fig. 1, 2, 4 & 5	18117		
<b>Feed-thru Flame Rods</b> For Fig. 6 - INDUCT FEED THRU PILOT (order separately from burner)	12"	47631		
	18"	47632		
	24"	46580		
	30"	47635		
	36"	47637		
<b>Adjustable Orifice</b>	HC	38009		
	VHC	50431		

NOTE: Spark ignitor, flame rod and adjustable orifice included (shipped loose)

## Assembly Numbers

### Replacement Blowers

APX Burner Size	380/400/3/50 Blower(s)	240/480/3/60 Blower(s)	575/3/60 Blower(s)
0050 APX	47386	47386	48370
0100 APX	50107597-001	47145	47387
0150 APX	50107598-001	47146	47388
0200 APX	47147	47147	47389
0250 APX, 0300 APX	47148	47148	47390
0350 APX, 0400 APX	47149	47149	47391
0500 APX	47150	47150	47392
0600 APX	47148 (2)	47148 (2)	47390 (2)
0700 APX, 0800 APX	47149 (2)	47149 (2)	47391 (2)
0900 APX, 1000 APX, 1100 APX	47150 (2)	47150 (2)	47392 (2)
1200 APX	47149 (3)	47149 (3)	47391 (3)
1300 APX, 1400 APX, 1500 APX	47150 (3)	47150 (3)	47392 (3)