

Operating instructions

Replacing the solenoid actuator for VAS 6 – 9, VCS 6 – 9, MB 7

Replacing the actuator cartridge for VAS 6 – 9, VCS 6 – 9



Contents

Replacing the solenoid actuator for VAS 6 – 9, VCS 6 – 9, MB 7 1

Replacing the actuator cartridge for VAS 6 – 9, VCS 6 – 9 1

Contents 1

Safety 1

Checking the usage 2

Intended use 2

Part designations 2

Replacing the solenoid actuator 2

VAS, MB 7, quick opening/quick closing 2

VAS, MB 7, slow opening/quick closing 2

MB 7, slow opening/slow closing 3

Setting the start gas rate 3

Replacing the actuator cartridge 4

VAS 6–9, VCS 6–9 4

Logistics 4

Contact 4

Safety

Please read and keep in a safe place



Please read through these instructions carefully before installing or operating. Following the installation, pass the instructions on to the operator. This unit must be installed and commissioned in accordance with the regulations and standards in force. These instructions can also be found at www.docuthek.com.

Explanation of symbols

■, **1**, **2**, **3**... = Action
 ▷ = Instruction

Liability

We will not be held liable for damage resulting from non-observance of the instructions and non-compliant use.

Safety instructions

Information that is relevant for safety is indicated in the instructions as follows:

⚠ DANGER

Indicates potentially fatal situations.

⚠ WARNING

Indicates possible danger to life and limb.

! CAUTION

Indicates possible material damage.

All interventions may only be carried out by qualified gas technicians. Electrical interventions may only be carried out by qualified electricians.

Conversion, spare parts

All technical changes are prohibited. Only use OEM spare parts.

Checking the usage

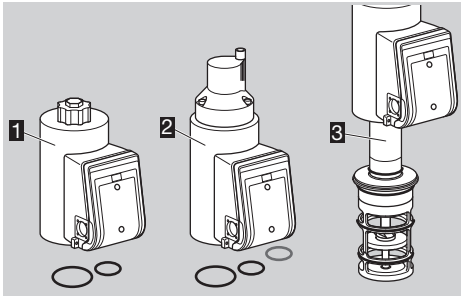
Intended use

These instructions are only to be used for replacing solenoid actuators on the devices VAS 6 – 9, VCS 6 – 9, MB 7 and for replacing solenoid actuators with actuator cartridges on the devices VAS 6 – 9, VCS 6 – 9.

This function is only guaranteed when used within the specified limits – see Technical data in the operating instructions of the device to be converted. Any other use is considered as non-compliant.

All other specifications regarding commissioning, technical data, maintenance, etc. can be found in the corresponding operating instructions of the device to be converted or go to www.docuthek.com
→ Home → Elster Thermal Solutions → Products → 03 Valves and butterfly valves
→ Solenoid-operated butterfly valves for air MB 7/ BVHM → MB 7, BVHM,
→ Solenoid valves for gas VAS, VCS → VAS 6-9, VCS 6-9.

Part designations



- 1 Solenoid actuator (quick opening) and 2 x sealing rings
- 2 Solenoid actuator (slow opening) and 3 x sealing rings
- 3 VAS 6–9, VCS 6–9: actuator cartridge with solenoid actuator

Replacing the solenoid actuator

⚠ WARNING

Please observe the following to ensure that no damage occurs:

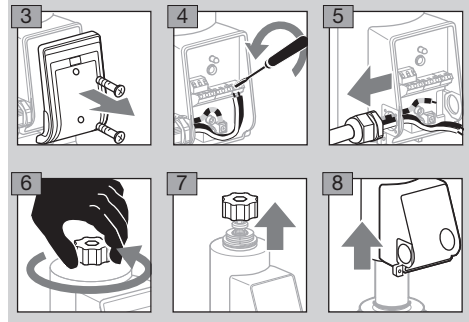
- Electric shocks can be fatal! Before working on possible live components, ensure the unit is disconnected from the power supply.
- The solenoid actuator heats up during operation. Surface temperature approx. 85°C (approx. 185°F).



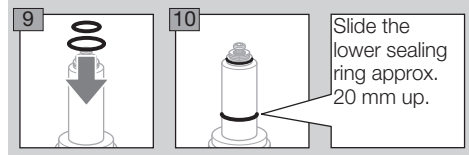
- 1 Shut off the air and gas supplies.

VAS, MB 7, quick opening/quick closing

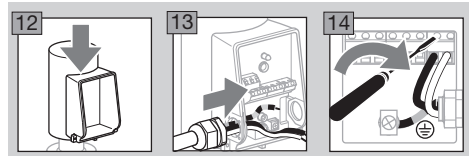
- 2 Disconnect the system from the electrical power supply.
- ▷ The pictures below may not correspond to the actual electrical connection.



- ▷ Replace all seals from the conversion kit.



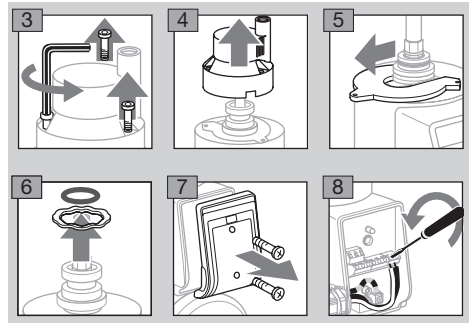
- 11 Unscrew the housing cover from the new actuator.

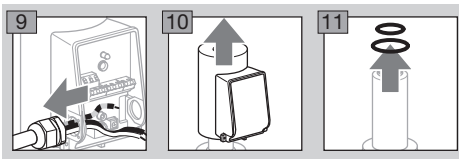


- 15 After wiring, open the air and gas supplies, and switch on the power supply.

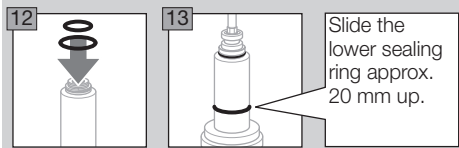
VAS, MB 7, slow opening/quick closing

- 2 Disconnect the system from the electrical power supply.





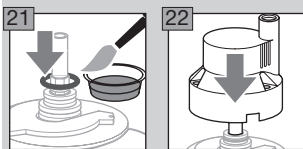
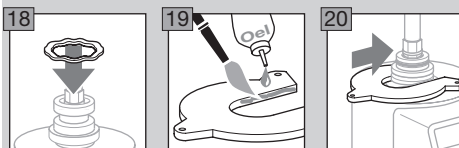
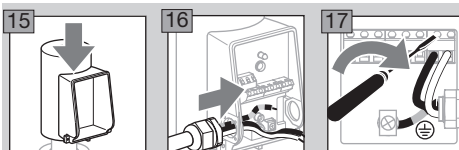
- ▷ Replace all seals from the conversion kit.



Slide the lower sealing ring approx. 20 mm up.

- 14** Unscrew the housing cover from the new actuator.

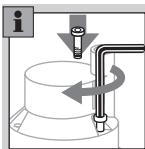
- ▷ The pictures below may not correspond to the actual electrical connection.



- 23** Turn the damping unit until the hexagon and compression fitting are inserted in the housing of the damping unit.

- 24** Push the damping unit onto the actuator applying pressure and secure again using two screws.

- ▷ Do not fit the third screw until the start gas rate has been set.



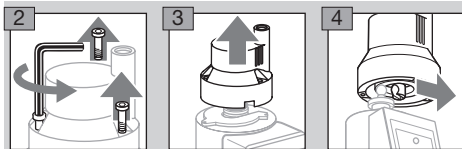
- 25** Open the air and gas supplies, and switch on the power supply.

- 26** If necessary, set the start gas rate, see page 3 (Setting the start gas rate).

- 27** Fully tighten the damping unit.

MB 7, slow opening/slow closing

- ▷ The solenoid actuator remains switched on.



- 5** Disconnect the solenoid actuator from the electrical power supply. Otherwise, the solenoid actuator will heat up unnecessarily.

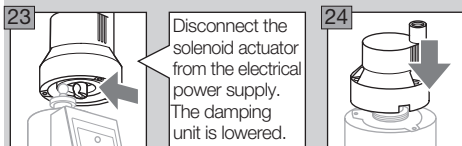
- ▷ For further disassembly and assembly of the actuator, see Figures 5 to 21 under “VAS, MB 7, slow opening/slow closing”.

- 22** Before fitting the damping unit: switch on the solenoid actuator so that the guide pin becomes visible.

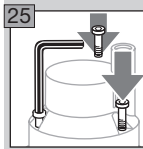
⚠ WARNING

Risk of crushing!

- When the power supply is switched off, the damping unit suddenly drops down onto the solenoid actuator.



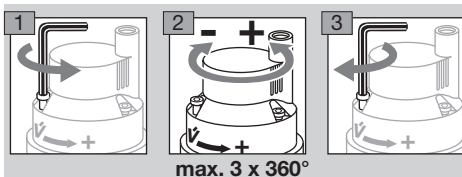
Disconnect the solenoid actuator from the electrical power supply. The damping unit is lowered.



- 26** Open the air and gas supplies, and switch on the power supply.

Setting the start gas rate

- ▷ The start gas rate can be set by turning the damping unit a maximum of 3 turns.
- ▷ There must be a period of 20 seconds between switching the device off and on again so that the damping is fully effective.
- ▷ Undo the screw at the “V Start” mark by approx. 1 mm, but do not unscrew completely.

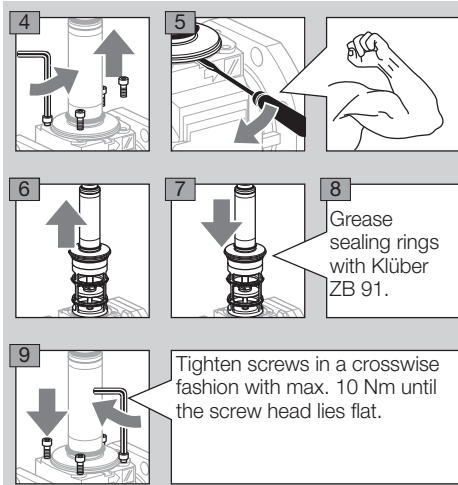


max. 3 x 360°

Replacing the actuator cartridge

VAS 6-9, VCS 6-9

- 1 Disconnect the system from the electrical power supply.
- 2 Shut off the gas supply.
- 3 Remove the actuator, see page 2 (Replacing the solenoid actuator).



- 10 Install the actuator, see page 2 (Replacing the solenoid actuator).
- 11 Check for tightness, see section entitled "Tightness test" in the corresponding operating instructions of the device to be converted.

Logistics

Transport

Protect the unit from external forces (blows, shocks, vibration). On receipt of the product, check that the delivery is complete, see page 2 (Part designations). Report any transport damage immediately.

Storage

Store the product in a dry and clean place.

Storage temperature: see section entitled "Technical data" in the corresponding operating instructions of the device to be converted.

Storage time: 6 months in the original packaging before using for the first time. If stored for longer than this, the overall service life will be reduced by the corresponding amount of extra storage time.

Packaging

The packaging material is to be disposed of in accordance with local regulations.

Disposal

Components are to be disposed of separately in accordance with local regulations.

Contact

If you have any technical questions, please contact your local branch office/agent. The addresses are available on the Internet or from Elster GmbH.

We reserve the right to make technical modifications in the interests of progress.

Honeywell

**krom/
schroder**

Elster GmbH
Strotheweg 1, D-49504 Lotte (Büren)

Tel +49 541 1214-0

Fax +49 541 1214-370

info@kromschroeder.com, www.kromschroeder.com