

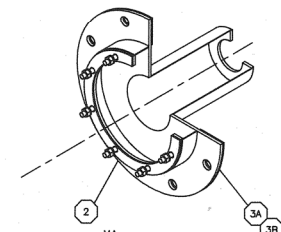
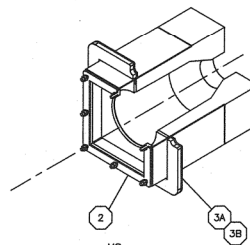
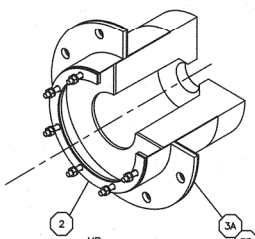
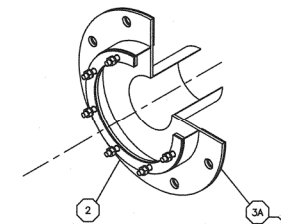
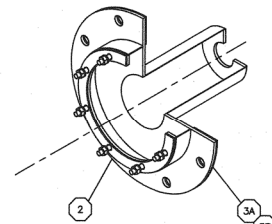
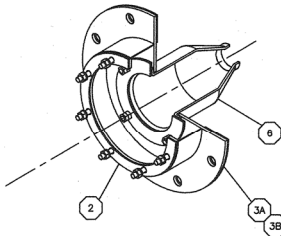
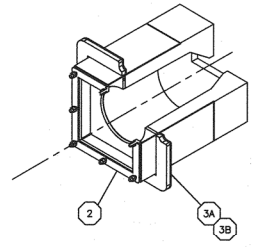
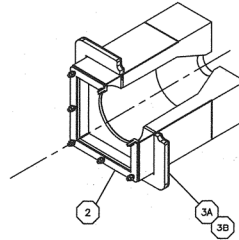
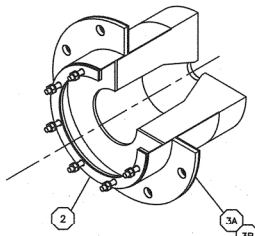
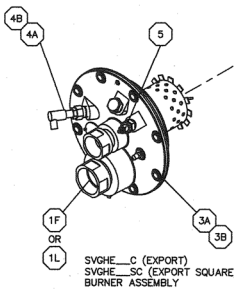
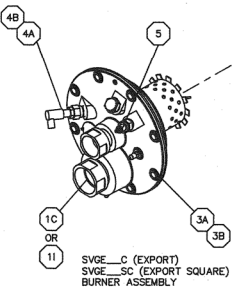
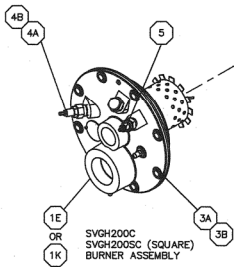
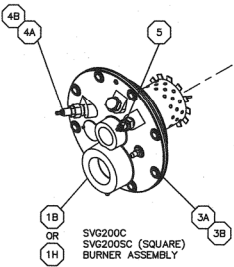
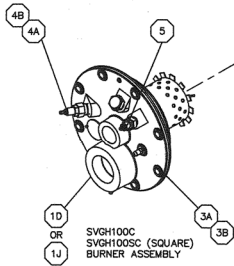
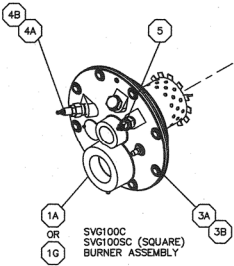


# PARTS LIST

## SVG SUPER VERSATILE GAS BURNER SVG\_10C – SVGH\_80C

STANDARD TEMP. – 500F

HIGH TEMP. – 900F



Y7291  
(NOT TO SCALE)

**SVG\_10C – SVGH\_10C**

<b>SVG_10C - SVGH_10C</b>		<u>HR</u>	<u>HS</u>	<u>HC</u>	<u>HA</u>
1A	Burner Assy., SVG110C, 16 osi, 500°F	SVG110C	SVG110C	SVG110C	SVG110C
1B	Burner Assy., SVG210C, 8 osi, 500°F	SVG210C	SVG210C	SVG210C	SVG210C
1C	Burner Assy., SVGE10C, Metric, 500°F	SVGE10C	SVGE10C	SVGE10C	SVGE10C
1D	Burner Assy., SVGH110C, 16 osi, 900°F	SVGH110C	SVGH110C	SVGH110C	N/A
1E	Burner Assy., SVGH210C, 8 osi, 900°F	SVGH210C	SVGH210C	SVGH210C	N/A
1F	Burner Assy., SVGHE10C, Metric, 900°F	SVGHE10C	SVGHE10C	SVGHE10C	N/A
2	Tile Assy. (3A or 3B Sold Separate)	TileSVG110	TileSVG110	405791	405695-A
	w/Flange (Option)	TileSVG110	TileSVG110	405791	405695-A
	w/Lugs (Option) HS/MS Only	TileSVG110	TileSVG110	405791	405695-A
	L/Mounting (Option)	405548-A	405743-A	405791	405695-A
3A	Kit, Gasket (Standard Temperature)	405718	405782	405799	405718
3B	Kit, Gasket (High Temperature)	405726	405786	405801	405726
4A	Flame Rod (Option)	400099x002	400099x002	400099x002	400099x002
4B	Scanner (Option) (Separate Line Item)	---	---	---	---
5	Igniter Assembly, Spark	53400x025	53400x025	53400x025	53400x025
6	Tube Kit Replacement	N/A	N/A	401591	N/A

<b>SVG_10C - SVGH_10C</b>		<u>MR</u>	<u>MS</u>	<u>MA</u>	<u>CP</u>
1A	Burner Assy., SVG110C, 16 osi, 500°F	SVG110C	SVG110C	SVG110C	SVG110C
1B	Burner Assy., SVG210C, 8 osi, 500°F	SVG210C	SVG210C	SVG210C	SVG210C
1C	Burner Assy., SVGE10C, Metric, 500°F	SVGE10C	SVGE10C	SVGE10C	SVGE10C
1D	Burner Assy., SVGH110C, 16 osi, 900°F	SVGH110C	SVGH110C	N/A	SVGH110C
1E	Burner Assy., SVGH210C, 8 osi, 900°F	SVGH210C	SVGH210C	N/A	SVGH210C
1F	Burner Assy., SVGHE10C, Metric, 900°F	SVGHE10C	SVGHE10C	N/A	SVGHE10C
2	Tile Assy. (3A or 3B Sold Separate)	TileSVG110	TileSVG110	405705-A	405705-A-001
	w/Flange (Option)	TileSVG110	TileSVG110	405705-A	405705-A-001
	w/Lugs (Option) HS/MS Only	TileSVG110	TileSVG110	405705-A	405705-A-001
	L/Mounting (Option)	405558-A	405736-A	405705-A	405705-A-001
3A	Kit, Gasket (Standard Temperature)	405718	405782	405718	405718
3B	Kit, Gasket (High Temperature)	405726	405786	405726	405726
4A	Flame Rod (Option)	400099x002	400099x002	400099x002	400099x002
4B	Scanner (Option) (Separate Line Item)	---	---	---	---
5	Igniter Assembly, Spark	53400x025	53400x025	53400x025	53400x025
6	Tube Kit Replacement	N/A	N/A	N/A	N/A

NOTE: Parts listed to be available for 5 years. Items shown in red, to be maintained as spares for 10 years.

**SVG\_12C – SVGH\_12C**

<b>SVG_12C – SVGH_12C</b>		<u>HR</u>	<u>HS</u>	<u>HC</u>	<u>HA</u>
1A	Burner Assy., SVG112C, 16 osi, 500°F	SVG112C	SVG112C	SVG112C	SVG112C
1B	Burner Assy., SVG212C, 8 osi, 500°F	SVG212C	SVG212C	SVG212C	SVG212C
1C	Burner Assy., SVGE12C, Metric, 500°F	SVGE12C	SVGE12C	SVGE12C	SVGE12C
1D	Burner Assy., SVGH112C, 16 osi, 900°F	SVGH112C	SVGH112C	SVGH112C	N/A
1E	Burner Assy., SVGH212C, 8 osi, 900°F	SVGH212C	SVGH212C	SVGH212C	N/A
1F	Burner Assy., SVGHE12C, Metric, 900°F	SVGHE12C	SVGHE12C	SVGHE12C	N/A
2	Tile Assy. (3A or 3B Sold Separate)	TileSVG112	TileSVG112	405792	405696-A
	w/Flange (Option)	TileSVG112	TileSVG112	405792	405696-A
	w/Lugs (Option)	TileSVG112	TileSVG112	405792	405696-A
	L/Mounting (Option)	405549-A	405744-A	405792	405696-A
3A	Kit, Gasket (Standard Temperature)	405719	405783	405800	405719
3B	Kit, Gasket (High Temperature)	405727	405787	405802	405727
4A	Flame Rod (Option)	400099x007	400099x007	400099x007	400099x007
4B	Scanner (Option) (Separate Line Item)	---	---	---	---
5	Igniter Assembly, Spark	53400x003	53400x003	53400x003	53400x003
6	Tube Kit Replacement	N/A	N/A	401592	N/A

<b>SVG_12C – SVGH_12C</b>		<u>MR</u>	<u>MS</u>	<u>MA</u>	<u>CP</u>
1A	Burner Assy., SVG112C, 16 osi, 500°F	SVG112C	SVG112C	SVG112C	SVG112C
1B	Burner Assy., SVG212C, 8 osi, 500°F	SVG212C	SVG212C	SVG212C	SVG212C
1C	Burner Assy., SVGE12C, Metric, 500°F	SVGE12C	SVGE12C	SVGE12C	SVGE12C
1D	Burner Assy., SVGH112C, 16 osi, 900°F	SVGH112C	SVGH112C	N/A	SVGH112C
1E	Burner Assy., SVGH212C, 8 osi, 900°F	SVGH212C	SVGH212C	N/A	SVGH212C
1F	Burner Assy., SVGHE12C, Metric, 900°F	SVGHE12C	SVGHE12C	N/A	SVGHE12C
2	Tile Assy. (3A or 3B Sold Separate)	TileSVG112	TileSVG112	405706-A	405706-A-001
	w/Flange (Option)	TileSVG112	TileSVG112	405706-A	405706-A-001
	w/Lugs (Option)	TileSVG112	TileSVG112	405706-A	405706-A-001
	L/Mounting (Option)	405559-A	405737-A	405706-A	405706-A-001
3A	Kit, Gasket (Standard Temperature)	405719	405783	405719	405719
3B	Kit, Gasket (High Temperature)	405727	405787	405727	405727
4A	Flame Rod (Option)	400099x007	400099x007	400099x007	400099x007
4B	Scanner (Option) (Separate Line Item)	---	---	---	---
5	Igniter Assembly, Spark	53400x003	53400x003	53400x003	53400x003
6	Tube Kit Replacement	N/A	N/A	N/A	N/A

NOTE: Parts listed to be available for 5 years. Items shown in red, to be maintained as spares for 10 years.

**SVG\_15C – SVGH\_15C**

<b>SVG_15C – SVGH_15C</b>		<u>HR</u>	<u>HS</u>	<u>HC</u>	<u>HA</u>
1A	Burner Assy., SVG115C, 16 osi, 500°F	SVG115C	SVG115C	SVG115C	SVG115C
1B	Burner Assy., SVG215C, 8 osi, 500°F	SVG215C	SVG215C	SVG215C	SVG215C
1C	Burner Assy., SVGE15C, Metric, 500°F	SVGE15C	SVGE15C	SVGE15C	SVGE15C
1D	Burner Assy., SVGH115C, 16 osi, 900°F	SVGH115C	SVGH115C	SVGH115C	N/A
1E	Burner Assy., SVGH215C, 8 osi, 900°F	SVGH215C	SVGH215C	SVGH215C	N/A
1F	Burner Assy., SVGHE15C, Metric, 900°F	SVGHE15C	SVGHE15C	SVGHE15C	N/A
2	Tile Assy. (3A or 3B Sold Separate)	TileSVG115	TileSVG115	405793	405697-A
	w/Flange (Option)	TileSVG115	TileSVG115	405793	405697-A
	w/Lugs (Option)	TileSVG115	TileSVG115	405793	405697-A
	L/Mounting (Option)	405550-A	405745-A	405793	405697-A
3A	Kit, Gasket (Standard Temperature)	405719	405783	405800	405719
3B	Kit, Gasket (High Temperature)	405727	405787	405802	405727
4A	Flame Rod (Option)	400099x008	400099x008	400099x008	400099x008
4B	Scanner (Option) (Separate Line Item)	---	---	---	---
5	Igniter Assembly, Spark	53400x003	53400x003	53400x003	53400x003
6	Tube Kit Replacement	N/A	N/A	401593	N/A

<b>SVG_15C – SVGH_15C</b>		<u>MR</u>	<u>MS</u>	<u>MA</u>	<u>CP</u>
1A	Burner Assy., SVG115C, 16 osi, 500°F	SVG115C	SVG115C	SVG115C	SVG115C
1B	Burner Assy., SVG215C, 8 osi, 500°F	SVG215C	SVG215C	SVG215C	SVG215C
1C	Burner Assy., SVGE15C, Metric, 500°F	SVGE15C	SVGE15C	SVGE15C	SVGE15C
1D	Burner Assy., SVGH115C, 16 osi, 900°F	SVGH115C	SVGH115C	N/A	SVGH115C
1E	Burner Assy., SVGH215C, 8 osi, 900°F	SVGH215C	SVGH215C	N/A	SVGH215C
1F	Burner Assy., SVGHE15C, Metric, 900°F	SVGHE15C	SVGHE15C	N/A	SVGHE15C
2	Tile Assy. (3A or 3B Sold Separate)	TileSVG115	TileSVG115	405707-A	405706-A-001
	w/Flange (Option)	TileSVG115	TileSVG115	405707-A	405706-A-001
	w/Lugs (Option)	TileSVG115	TileSVG115	405707-A	405706-A-001
	L/Mounting (Option)	405560-A	405738-A	405707-A	405706-A-001
3A	Kit, Gasket (Standard Temperature)	405719	405783	405719	405719
3B	Kit, Gasket (High Temperature)	405727	405787	405727	405727
4A	Flame Rod (Option)	400099x008	400099x008	400099x008	400099x008
4B	Scanner (Option) (Separate Line Item)	---	---	---	---
5	Igniter Assembly, Spark	53400x003	53400x003	53400x003	53400x003
6	Tube Kit Replacement	N/A	N/A	N/A	N/A

NOTE: Parts listed to be available for 5 years. Items shown in red, to be maintained as spares for 10 years.

SVG\_20C - SVGH\_20SC

SVG\_20C - SVGH\_20SC

	<u>HR</u>	<u>HS</u>	<u>HT</u>	<u>HC</u>	<u>HA</u>
1A Burner Assy., SVG120C, 16 osi, 500 °F	SVG120C	N/A	N/A	SVG120C	SVG120C
1B Burner Assy., SVG220C, 8 osi, 500 °F	SVG220C	N/A	N/A	SVG220C	SVG220C
1C Burner Assy., SVGE20C, Metric, 500 °F	SVGE20C	N/A	N/A	SVGE20C	SVGE20C
1D Burner Assy., SVGH120C, 16 osi, 900 °F	SVGH120C	N/A	N/A	SVGH120C	N/A
1E Burner Assy., SVGH220C, 8 osi, 900 °F	SVGH220C	N/A	N/A	SVGH220C	N/A
1F Burner Assy., SVGHE20C, Metric, 900 °F	SVGHE20C	N/A	N/A	SVGHE20C	N/A
1G Burner Assy., SVG120SC, 16 osi, 500 °F	N/A	SVG120SC	SVG120SC	N/A	N/A
1H Burner Assy., SVG220SC, 8 osi, 500 °F	N/A	SVG220SC	SVG220SC	N/A	N/A
1I Burner Assy., SVGE20SC, Metric 500 °F	N/A	SVGE20SC	SVGE20SC	N/A	N/A
1J Burner Assy., SVGH120SC, 16 osi, 900 °F	N/A	SVGH120SC	SVGH120SC	N/A	N/A
1K Burner Assy., SVGH220SC, 8 osi, 900 °F	N/A	SVGH220SC	SVGH220SC	N/A	N/A
1L Burner Assy., SVGHE20SC, Metric, 900 °F	N/A	SVGHE20SC	SVGHE20SC	N/A	N/A
2 Tile Assy. (3A or 3B Sold Separate)	TileSVG120	TileSVG120	TileSVG120	405794	405698-A
w/Flange (Option)	TileSVG120	TileSVG120	TileSVG120	405794	405698-A
w/Lugs (Option)	N/A	TileSVG120	TileSVG120	405794	405698-A
L/Mounting (Option)	405551-A	405746-A	405746-A	405794	405698-A
3A Kit, Gasket (Standard Temperature)	405720	405784	405784	405720	405720
3B Kit, Gasket (High Temperature)	405728	405788	405788	405728	405728
4A Flame Rod (Option)	400099x001	400099x001	400099x001	400099x001	400099x001
4B Scanner (Option) (Separate Line Item)	---	---	---	---	---
5 Igniter Assembly, Spark	53400x002	53400x002	53400x002	53400x002	53400x002
6 Tube Kit Replacement	N/A	N/A	N/A	401594	N/A

SVG\_20C - SVGH\_20SC

	<u>MR</u>	<u>MS</u>	<u>MA</u>	<u>CP</u>
1A Burner Assy., SVG120C, 16 osi, 500 °F	SVG120C	N/A	SVG120C	SVG120C
1B Burner Assy., SVG220C, 8 osi, 500 °F	SVG220C	N/A	SVG220C	SVG220C
1C Burner Assy., SVGE20C, Metric, 500 °F	SVGE20C	N/A	SVGE20C	SVGE20C
1D Burner Assy., SVGH120C, 16 osi, 900 °F	SVGH120C	N/A	N/A	SVGH120C
1E Burner Assy., SVGH220C, 8 osi, 900 °F	SVGH220C	N/A	N/A	SVGH220C
1F Burner Assy., SVGHE20C, Metric, 900 °F	SVGHE20C	N/A	N/A	SVGHE20C
1G Burner Assy., SVG120SC, 16 osi, 500 °F	N/A	SVG120SC	N/A	N/A
1H Burner Assy., SVG220SC, 8 osi, 500 °F	N/A	SVG220SC	N/A	N/A
1I Burner Assy., SVGE20SC, Metric 500 °F	N/A	SVGE20SC	N/A	N/A
1J Burner Assy., SVGH120SC, 16 osi, 900 °F	N/A	SVGH120SC	N/A	N/A
1K Burner Assy., SVGH220SC, 8 osi, 900 °F	N/A	SVGH220SC	N/A	N/A
1L Burner Assy., SVGHE20SC, Metric, 900 °F	N/A	SVGHE20SC	N/A	N/A
2 Tile Assy. (3A or 3B Sold Separate)	TileSVG120	TileSVG120	405708-A	405708-A-001
w/Flange (Option)	TileSVG120	TileSVG120	405708-A	405708-A-001
w/Lugs (Option)	TileSVG120	TileSVG120	405708-A	405708-A-001
L/Mounting (Option)	405561-A	405739-A	405708-A	405708-A-001
3A Kit, Gasket (Standard Temperature)	405720	405784	405720	405720
3B Kit, Gasket (High Temperature)	405728	405788	405728	405728
4A Flame Rod (Option)	400099x001	400099x001	400099x001	400099x001
4B Scanner (Option) (Separate Line Item)	---	---	---	---
5 Igniter Assembly, Spark	53400x002	53400x002	53400x002	53400x002
6 Tube Kit Replacement	N/A	N/A	N/A	N/A

NOTE: Parts listed to be available for 5 years. Items shown in red, to be maintained as spares for 10 years.

**SVG\_25C - SVGH\_25SC**

**SVG\_25C - SVGH\_25SC**

	<u>HR</u>	<u>HS</u>	<u>HT</u>	<u>HC</u>	<u>HA</u>
1A Burner Assy., SVG125C, 16 osi, 500 °F	SVG125C	N/A	N/A	SVG125C	SVG125C
1B Burner Assy., SVG225C, 8 osi, 500 °F	SVG225C	N/A	N/A	SVG225C	SVG225C
1C Burner Assy., SVGE25C, Metric, 500 °F	SVGE25C	N/A	N/A	SVGE25C	SVGE25C
1D Burner Assy., SVGH125C, 16 osi, 900 °F	SVGH125C	N/A	N/A	SVGH125C	N/A
1E Burner Assy., SVGH225C, 8 osi, 900 °F	SVGH225C	N/A	N/A	SVGH225C	N/A
1F Burner Assy., SVGHE25C, Metric, 900 °F	SVGHE25C	N/A	N/A	SVGHE25C	N/A
1G Burner Assy., SVG125SC, 16 osi, 500 °F	N/A	SVG125SC	SVG125SC	N/A	N/A
1H Burner Assy., SVG225SC, 8 osi, 500 °F	N/A	SVG225SC	SVG225SC	N/A	N/A
1I Burner Assy., SVGE25SC, Metric 500 °F	N/A	SVGE25SC	SVGE25SC	N/A	N/A
1J Burner Assy., SVGH125SC, 16 osi, 900 °F	N/A	SVGH125SC	SVGH125SC	N/A	N/A
1K Burner Assy., SVGH225SC, 8 osi, 900 °F	N/A	SVGH225SC	SVGH225SC	N/A	N/A
1L Burner Assy., SVGHE25SC, Metric, 900 °F	N/A	SVGHE25SC	SVGHE25SC	N/A	N/A
2 Tile Assy. (3A or 3B Sold Separate)	TileSVG125	TileSVG125	TileSVG125	405795	405699-A
w/Flange (Option)	TileSVG125	TileSVG125	TileSVG125	405795	405699-A
w/Lugs (Option)	N/A	TileSVG125	TileSVG125	405795	405699-A
L/Mounting (Option)	405552-A	405747-A	405747-A	405795	405699-A
3A Kit, Gasket (Standard Temperature)	405720	405785	405785	405720	405720
3B Kit, Gasket (High Temperature)	405728	405789	405789	405728	405728
4A Flame Rod (Option)	400099x001	400099x001	400099x001	400099x001	400099x001
4B Scanner (Option) (Separate Line Item)	---	---	---	---	---
5 Igniter Assembly, Spark	53400x002	53400x002	53400x002	53400x002	53400x002
6 Tube Kit Replacement	N/A	N/A	N/A	401595	N/A

**SVG\_25C - SVGH\_25SC**

	<u>MR</u>	<u>MS</u>	<u>MA</u>	<u>CP</u>
1A Burner Assy., SVG125C, 16 osi, 500 °F	SVG125C	N/A	SVG125C	SVG125C
1B Burner Assy., SVG225C, 8 osi, 500 °F	SVG225C	N/A	SVG225C	SVG225C
1C Burner Assy., SVGE25C, Metric, 500 °F	SVGE25C	N/A	SVGE25C	SVGE25C
1D Burner Assy., SVGH125C, 16 osi, 900 °F	SVGH125C	N/A	SVGH125C	SVGH125C
1E Burner Assy., SVGH225C, 8 osi, 900 °F	SVGH225C	N/A	SVGH225C	SVGH225C
1F Burner Assy., SVGHE25C, Metric, 900 °F	SVGHE25C	N/A	SVGHE25C	SVGHE25C
1G Burner Assy., SVG125SC, 16 osi, 500 °F	N/A	SVG125SC	N/A	N/A
1H Burner Assy., SVG225SC, 8 osi, 500 °F	N/A	SVG225SC	N/A	N/A
1I Burner Assy., SVGE25SC, Metric 500 °F	N/A	SVGE25SC	N/A	N/A
1J Burner Assy., SVGH125SC, 16 osi, 900 °F	N/A	SVGH125SC	N/A	N/A
1K Burner Assy., SVGH225SC, 8 osi, 900 °F	N/A	SVGH225SC	N/A	N/A
1L Burner Assy., SVGHE25SC, Metric, 900 °F	N/A	SVGHE25SC	N/A	N/A
2 Tile Assy. (3A or 3B Sold Separate)	TileSVG125	TileSVG125	405709-A	405709-A-001
w/Flange (Option)	TileSVG125	TileSVG125	405709-A	405709-A-001
w/Lugs (Option)	TileSVG125	TileSVG125	405709-A	405709-A-001
L/Mounting (Option)	405562-A	405740-A	405709-A	405709-A-001
3A Kit, Gasket (Standard Temperature)	405720	405785	405720	405720
3B Kit, Gasket (High Temperature)	405728	405789	405728	405728
4A Flame Rod (Option)	400099x001	400099x001	400099x001	400099x001
4B Scanner (Option) (Separate Line Item)	---	---	---	---
5 Igniter Assembly, Spark	53400x002	53400x002	53400x002	53400x002
6 Tube Kit Replacement	N/A	N/A	N/A	N/A

NOTE: Parts listed to be available for 5 years. Items shown in red, to be maintained as spares for 10 years.

SVG\_30C - SVGH\_30SC

SVG\_30C - SVGH\_30SC

	<u>HR</u>	<u>HS</u>	<u>HT</u>	<u>HC</u>	<u>HA</u>
1A Burner Assy., SVG130C, 16 osi, 500 °F	SVG130C	N/A	N/A	SVG130C	SVG130C
1B Burner Assy., SVG230C, 8 osi, 500 °F	SVG230C	N/A	N/A	SVG230C	SVG230C
1C Burner Assy., SVGE30C, Metric, 500 °F	SVGE30C	N/A	N/A	SVGE30C	SVGE30C
1D Burner Assy., SVGH130C, 16 osi, 900 °F	SVGH130C	N/A	N/A	SVGH130C	N/A
1E Burner Assy., SVGH230C, 8 osi, 900 °F	SVGH230C	N/A	N/A	SVGH230C	N/A
1F Burner Assy., SVGHE30C, Metric, 900 °F	SVGHE30C	N/A	N/A	SVGHE30C	N/A
1G Burner Assy., SVG130SC, 16 osi, 500 °F	N/A	SVG130SC	SVG130SC	N/A	N/A
1H Burner Assy., SVG230SC, 8 osi, 500 °F	N/A	SVG230SC	SVG230SC	N/A	N/A
1I Burner Assy., SVGE30SC, Metric 500 °F	N/A	SVGE30SC	SVGE30SC	N/A	N/A
1J Burner Assy., SVGH130SC, 16 osi, 900 °F	N/A	SVGH130SC	SVGH130SC	N/A	N/A
1K Burner Assy., SVGH230SC, 8 osi, 900 °F	N/A	SVGH230SC	SVGH230SC	N/A	N/A
1L Burner Assy., SVGHE30SC, Metric, 900 °F	N/A	SVGHE30SC	SVGHE30SC	N/A	N/A
2 Tile Assy. (3A or 3B Sold Separate)	TileSVG130	TileSVG130	TileSVG130	405796	405700-A
w/Flange (Option)	TileSVG130	TileSVG130	TileSVG130	405796	405700-A
w/Lugs (Option)	TileSVG130	TileSVG130	TileSVG130	405796	405700-A
L/Mounting (Option)	405553-A	405748-A	405748-A	405796	405700-A
3A Kit, Gasket (Standard Temperature)	405721	405785	405785	405721	405721
3B Kit, Gasket (High Temperature)	405729	405789	405789	405729	405729
4A Flame Rod (Option)	400099x003	400099x003	400099x003	400099x003	400099x003
4B Scanner (Option) (Separate Line Item)	---	---	---	---	---
5 Igniter Assembly, Spark	53400x002	53400x002	53400x002	53400x002	53400x002
6 Tube Kit Replacement	N/A	N/A	N/A	401596	N/A

SVG\_30C - SVGH\_30SC

	<u>MR</u>	<u>MS</u>	<u>MA</u>	<u>CP</u>
1A Burner Assy., SVG130C, 16 osi, 500 °F	SVG130C	N/A	SVG130C	SVG130C
1B Burner Assy., SVG230C, 8 osi, 500 °F	SVG230C	N/A	SVG230C	SVG230C
1C Burner Assy., SVGE30C, Metric, 500 °F	SVGE30C	N/A	SVGE30C	SVGE30C
1D Burner Assy., SVGH130C, 16 osi, 900 °F	SVGH130C	N/A	N/A	SVGH130C
1E Burner Assy., SVGH230C, 8 osi, 900 °F	SVGH230C	N/A	N/A	SVGH230C
1F Burner Assy., SVGHE30C, Metric, 900 °F	SVGHE30C	N/A	N/A	SVGHE30C
1G Burner Assy., SVG130SC, 16 osi, 500 °F	N/A	SVG130SC	N/A	N/A
1H Burner Assy., SVG230SC, 8 osi, 500 °F	N/A	SVG230SC	N/A	N/A
1I Burner Assy., SVGE30SC, Metric 500 °F	N/A	SVGE30SC	N/A	N/A
1J Burner Assy., SVGH130SC, 16 osi, 900 °F	N/A	SVGH130SC	N/A	N/A
1K Burner Assy., SVGH230SC, 8 osi, 900 °F	N/A	SVGH230SC	N/A	N/A
1L Burner Assy., SVGHE30SC, Metric, 900 °F	N/A	SVGHE30SC	N/A	N/A
2 Tile Assy. (3A or 3B Sold Separate)	TileSVG130	TileSVG130	405710-A	405710-A-001
w/Flange (Option)	TileSVG130	TileSVG130	405710-A	405710-A-001
w/Lugs (Option)	TileSVG130	TileSVG130	405710-A	405710-A-001
L/Mounting (Option)	405563-A	405741-A	405710-A	405710-A-001
3A Kit, Gasket (Standard Temperature)	405721	405785	405721	405721
3B Kit, Gasket (High Temperature)	405729	405789	405729	405729
4A Flame Rod (Option)	400099x003	400099x003	400099x003	400099x003
4B Scanner (Option) (Separate Line Item)	---	---	---	---
5 Igniter Assembly, Spark	53400x002	53400x002	53400x002	53400x002
6 Tube Kit Replacement	N/A	N/A	N/A	N/A

NOTE: Parts listed to be available for 5 years. Items shown in red, to be maintained as spares for 10 years.

**SVG\_35C - SVGH\_35SC**

**SVG\_35C - SVGH\_35SC**

		<u>HR</u>	<u>HS</u>	<u>HT</u>	<u>HC</u>	<u>HA</u>
1A	Burner Assy., SVG135C, 16 osi, 500 °F	SVG135C	N/A	N/A	SVG135C	SVG135C
1B	Burner Assy., SVG235C, 8 osi, 500 °F	SVG235C	N/A	N/A	SVG235C	SVG235C
1C	Burner Assy., SVGE35C, Metric, 500 °F	SVGE35C	N/A	N/A	SVGE35C	SVGE35C
1D	Burner Assy., SVGH135C, 16 osi, 900 °F	SVGH135C	N/A	N/A	SVGH135C	N/A
1E	Burner Assy., SVGH235C, 8 osi, 900 °F	SVGH235C	N/A	N/A	SVGH235C	N/A
1F	Burner Assy., SVGHE35C, Metric, 900 °F	SVGHE35C	N/A	N/A	SVGHE35C	N/A
1G	Burner Assy., SVG135SC, 16 osi, 500 °F	N/A	SVG135SC	SVG135SC	N/A	N/A
1H	Burner Assy., SVG235SC, 8 osi, 500 °F	N/A	SVG235SC	SVG235SC	N/A	N/A
1I	Burner Assy., SVGE35SC, Metric 500 °F	N/A	SVGE35SC	SVGE35SC	N/A	N/A
1J	Burner Assy., SVGH135SC, 16 osi, 900 °F	N/A	SVGH135SC	SVGH135SC	N/A	N/A
1K	Burner Assy., SVGH235SC, 8 osi, 900 °F	N/A	SVGH235SC	SVGH235SC	N/A	N/A
1L	Burner Assy., SVGHE35SC, Metric, 900 °F	N/A	SVGHE35SC	SVGHE35SC	N/A	N/A
2	Tile Assy. (3A or 3B Sold Separate)	TileSVG135	TileSVG135	TileSVG135	N/A	N/A
	w/Flange (Option)	TileSVG135	TileSVG135	TileSVG135	N/A	N/A
	w/Lugs (Option)	TileSVG135	TileSVG135	TileSVG135	N/A	N/A
	L/Mounting (Option)	405554-A	406054-A	406054-A	N/A	N/A
3A	Kit, Gasket (Standard Temperature)	405721	405785	405785	405721	405721
3B	Kit, Gasket (High Temperature)	405729	405789	405789	405729	405729
4A	Flame Rod (Option)	400099x003	400099x003	400099x003	400099x003	400099x003
4B	Scanner (Option) (Separate Line Item)	---	---	---	---	---
5	Igniter Assembly, Spark	53400x002	53400x002	53400x002	53400x002	53400x002
6	Tube Kit Replacement	N/A	N/A	N/A	N/A	N/A

**SVG\_35C - SVGH\_35SC**

		<u>MR</u>	<u>MS</u>	<u>MA</u>	<u>CP</u>
1A	Burner Assy., SVG135C, 16 osi, 500 °F	SVG135C	N/A	SVG135C	SVG135C
1B	Burner Assy., SVG235C, 8 osi, 500 °F	SVG235C	N/A	SVG235C	SVG235C
1C	Burner Assy., SVGE35C, Metric, 500 °F	SVGE35C	N/A	SVGE35C	SVGE35C
1D	Burner Assy., SVGH135C, 16 osi, 900 °F	SVGH135C	N/A	N/A	SVGH135C
1E	Burner Assy., SVGH235C, 8 osi, 900 °F	SVGH235C	N/A	N/A	SVGH235C
1F	Burner Assy., SVGHE35C, Metric, 900 °F	SVGHE35C	N/A	N/A	SVGHE35C
1G	Burner Assy., SVG135SC, 16 osi, 500 °F	N/A	SVG135SC	N/A	N/A
1H	Burner Assy., SVG235SC, 8 osi, 500 °F	N/A	SVG235SC	N/A	N/A
1I	Burner Assy., SVGE35SC, Metric 500 °F	N/A	SVGE35SC	N/A	N/A
1J	Burner Assy., SVGH135SC, 16 osi, 900 °F	N/A	SVGH135SC	N/A	N/A
1K	Burner Assy., SVGH235SC, 8 osi, 900 °F	N/A	SVGH235SC	N/A	N/A
1L	Burner Assy., SVGHE35SC, Metric, 900 °F	N/A	SVGHE35SC	N/A	N/A
2	Tile Assy. (3A or 3B Sold Separate)	N/A	N/A	N/A	405711-A-001
	w/Flange (Option)	N/A	N/A	N/A	405711-A-001
	w/Lugs (Option)	N/A	N/A	N/A	405711-A-001
	L/Mounting (Option)	N/A	N/A	N/A	405711-A-001
3A	Kit, Gasket (Standard Temperature)	405721	405785	405721	405721
3B	Kit, Gasket (High Temperature)	405729	405789	405729	405729
4A	Flame Rod (Option)	400099x003	400099x003	400099x003	400099x003
4B	Scanner (Option) (Separate Line Item)	---	---	---	---
5	Igniter Assembly, Spark	53400x002	53400x002	53400x002	53400x002
6	Tube Kit Replacement	N/A	N/A	N/A	N/A

NOTE: Parts listed to be available for 5 years. Items shown in red, to be maintained as spares for 10 years.



**SVG\_40C - SVGH\_40SC**

**SVG\_40C - SVGH\_40SC**

	<u>HR</u>	<u>HS</u>	<u>HT</u>	<u>HC</u>	<u>HA</u>
1A Burner Assy., SVG140C, 16 osi, 500 °F	SVG140C	N/A	N/A	SVG140C	SVG140C
1B Burner Assy., SVG240C, 8 osi, 500 °F	SVG240C	N/A	N/A	SVG240C	SVG240C
1C Burner Assy., SVGE40C, Metric, 500 °F	SVGE40C	N/A	N/A	SVGE40C	SVGE40C
1D Burner Assy., SVGH140C, 16 osi, 900 °F	SVGH140C	N/A	N/A	SVGH140C	N/A
1E Burner Assy., SVGH240C, 8 osi, 900 °F	SVGH240C	N/A	N/A	SVGH240C	N/A
1F Burner Assy., SVGHE40C, Metric, 900 °F	SVGHE40C	N/A	N/A	SVGHE40C	N/A
1G Burner Assy., SVG140SC, 16 osi, 500 °F	N/A	SVG140C	SVG140C	N/A	N/A
1H Burner Assy., SVG240SC, 8 osi, 500 °F	N/A	SVG240C	SVG240C	N/A	N/A
1I Burner Assy., SVGE40SC, Metric 500 °F	N/A	SVGE40C	SVGE40C	N/A	N/A
1J Burner Assy., SVGH140SC, 16 osi, 900 °F	N/A	SVGH140SC	SVGH140SC	N/A	N/A
1K Burner Assy., SVGH240SC, 8 osi, 900 °F	N/A	SVGH240SC	SVGH240SC	N/A	N/A
1L Burner Assy., SVGHE40SC, Metric, 900 °F	N/A	SVGHE40SC	SVGHE40SC	N/A	N/A
2 Tile Assy. (3A or 3B Sold Separate)	TileSVG140	TileSVG140	TileSVG140	405798	405702-A
w/Flange (Option)	TileSVG140	TileSVG140	TileSVG140	405798	405702-A
w/Lugs (Option)	TileSVG140	TileSVG140	TileSVG140	405798	405702-A
L/Mounting (Option)	405555-A	405749-A	405749-A	405798	405702-A
3A Kit, Gasket (Standard Temperature)	405721	405785	405785	405721	405721
3B Kit, Gasket (High Temperature)	405729	405789	405789	405729	405729
4A Flame Rod (Option)	400099x004	400099x004	400099x004	400099x004	400099x004
4B Scanner (Option) (Separate Line Item)	---	---	---	---	---
5 Igniter Assembly, Spark	53400x004	53400x004	53400x004	53400x004	53400x004
6 Tube Kit Replacement	N/A	N/A	N/A	401597	N/A

**SVG\_40C - SVGH\_40SC**

	<u>MR</u>	<u>MS</u>	<u>MA</u>	<u>CP</u>
1A Burner Assy., SVG140C, 16 osi, 500 °F	SVG140C	N/A	SVG140C	SVG140C
1B Burner Assy., SVG240C, 8 osi, 500 °F	SVG240C	N/A	SVG240C	SVG240C
1C Burner Assy., SVGE40C, Metric, 500 °F	SVGE40C	N/A	SVGE40C	SVGE40C
1D Burner Assy., SVGH140C, 16 osi, 900 °F	SVGH140C	N/A	N/A	SVGH140C
1E Burner Assy., SVGH240C, 8 osi, 900 °F	SVGH240C	N/A	N/A	SVGH240C
1F Burner Assy., SVGHE40C, Metric, 900 °F	SVGHE40C	N/A	N/A	SVGHE40C
1G Burner Assy., SVG140SC, 16 osi, 500 °F	N/A	SVG140C	N/A	N/A
1H Burner Assy., SVG240SC, 8 osi, 500 °F	N/A	SVG240C	N/A	N/A
1I Burner Assy., SVGE40SC, Metric 500 °F	N/A	SVGE40C	N/A	N/A
1J Burner Assy., SVGH140SC, 16 osi, 900 °F	N/A	SVGH140SC	N/A	N/A
1K Burner Assy., SVGH240SC, 8 osi, 900 °F	N/A	SVGH240SC	N/A	N/A
1L Burner Assy., SVGHE40SC, Metric, 900 °F	N/A	SVGHE40SC	N/A	N/A
2 Tile Assy. (3A or 3B Sold Separate)	TileSVG140	TileSVG140	405712-A	405712-A-001
w/Flange (Option)	TileSVG140	TileSVG140	405712-A	405712-A-001
w/Lugs (Option)	TileSVG140	TileSVG140	405712-A	405712-A-001
L/Mounting (Option)	405565-A	405742-A	405712-A	405712-A-001
3A Kit, Gasket (Standard Temperature)	405721	405785	405721	405721
3B Kit, Gasket (High Temperature)	405729	405789	405729	405729
4A Flame Rod (Option)	400099x004	400099x004	400099x004	400099x004
4B Scanner (Option) (Separate Line Item)	---	---	---	---
5 Igniter Assembly, Spark	53400x004	53400x004	53400x004	53400x004
6 Tube Kit Replacement	N/A	N/A	N/A	N/A

NOTE: Parts listed to be available for 5 years. Items shown in red, to be maintained as spares for 10 years.

**SVG\_60C - SVGH\_60SC**

**SVG\_60C - SVGH\_60SC**

	<u>HR</u>	<u>HS</u>	<u>HC</u>	<u>HA</u>
1A Burner Assy., SVG160C, 16 osi, 500°F	SVG160C	N/A	SVG160C	SVG160C
1B Burner Assy., SVG260C, 8 osi, 500°F	SVG260C	N/A	SVG260C	SVG260C
1C Burner Assy., SVGE60C, Metric, 500°F	SVGE60C	N/A	SVGE60C	SVGE60C
1D Burner Assy., SVGH160C, 16 osi, 900°F	SVGH160C	N/A	SVGH160C	N/A
1E Burner Assy., SVGH260C, 8 osi, 900°F	SVGH260C	N/A	SVGH260C	N/A
1F Burner Assy., SVGHE60C, Metric, 900°F	SVGHE60C	N/A	SVGHE60C	N/A
2 Tile Assy. (3A or 3B Sold Separate)	TileSVG160	N/A	406131	405703-A
w/Flange (Option)	TileSVG160	N/A	406131	405703-A
L/Mounting (Option)	405556-A	N/A	406131	405703-A
3A Kit, Gasket (Standard Temperature)	405722	N/A	405722	405722
3B Kit, Gasket (High Temperature)	405730	N/A	405730	405730
4A Flame Rod (Option)	400099x005	N/A	400099x005	400099x005
4B Scanner (Option) (Separate Line Item)	---	N/A	---	---
5 Igniter Assembly, Spark	53400x028	N/A	53400x028	53400x028
6 Tube Kit Replacement	N/A	N/A	401598	N/A

**SVG\_60C - SVGH\_60SC**

	<u>MR</u>	<u>MS</u>	<u>MA</u>	<u>CP</u>
1A Burner Assy., SVG160C, 16 osi, 500°F	SVG160C	N/A	SVG160C	SVG160C
1B Burner Assy., SVG260C, 8 osi, 500°F	SVG260C	N/A	SVG260C	SVG260C
1C Burner Assy., SVGE60C, Metric, 500°F	SVGE60C	N/A	SVGE60C	SVGE60C
1D Burner Assy., SVGH160C, 16 osi, 900°F	SVGH160C	N/A	N/A	SVGH160C
1E Burner Assy., SVGH260C, 8 osi, 900°F	SVGH260C	N/A	N/A	SVGH260C
1F Burner Assy., SVGHE60C, Metric, 900°F	SVGHE60C	N/A	N/A	SVGHE60C
2 Tile Assy. (3A or 3B Sold Separate)	TileSVG160	N/A	405713-A	405713-A-001
w/Flange (Option)	TileSVG160	N/A	405713-A	405713-A-001
L/Mounting (Option)	405566-A	N/A	405713-A	405713-A-001
3A Kit, Gasket (Standard Temperature)	405722	N/A	405722	405722
3B Kit, Gasket (High Temperature)	405730	N/A	405730	405730
4A Flame Rod (Option)	400099x005	N/A	400099x005	400099x005
4B Scanner (Option) (Separate Line Item)	---	N/A	---	---
5 Igniter Assembly, Spark	53400x028	N/A	53400x028	53400x028
6 Tube Kit Replacement	N/A	N/A	N/A	N/A

NOTE: Parts listed to be available for 5 years. Items shown in red, to be maintained as spares for 10 years.

**SVG\_80C - SVGH\_80SC**

**SVG\_80C - SVGH\_80SC**

		<u>HR</u>	<u>HS</u>	<u>HC</u>	<u>HA</u>
1A	Burner Assy., SVG180C, 16 osi, 500°F	SVG180C	N/A	SVG180C	SVG180C
1B	Burner Assy., SVG280C, 8 osi, 500°F	SVG280C	N/A	SVG280C	SVG280C
1C	Burner Assy., SVGE680C, Metric, 500°F	SVGE80C	N/A	SVGE80C	SVGE80C
1D	Burner Assy., SVGH180C, 16 osi, 900°F	SVGH180C	N/A	SVGH180C	N/A
1E	Burner Assy., SVGH280C, 8 osi, 900°F	SVGH280C	N/A	SVGH280C	N/A
1F	Burner Assy., SVGHE80C, Metric, 900°F	SVGHE80C	N/A	SVGHE80C	N/A
2	Tile Assy. (3A or 3B Sold Separate)	TileSVG180	N/A	N/A	406484-A
	w/Flange (Option)	TileSVG180	N/A	N/A	406484-A
	L/Mounting (Option)	405557-A	N/A	N/A	406484-A
<b>3A</b>	<b>Kit, Gasket (Standard Temperature)</b>	<b>405723</b>	<b>N/A</b>	<b>405723</b>	<b>405723</b>
<b>3B</b>	<b>Kit, Gasket (High Temperature)</b>	<b>405731</b>	<b>N/A</b>	<b>405731</b>	<b>405731</b>
<b>4A</b>	<b>Flame Rod (Option)</b>	<b>400099x006</b>	<b>N/A</b>	<b>400099x006</b>	<b>400099x006</b>
4B	Scanner (Option) (Separate Line Item)	---	N/A	---	---
<b>5</b>	<b>Igniter Assembly, Spark</b>	<b>53400x028</b>	<b>N/A</b>	<b>53400x028</b>	<b>53400x028</b>
6	Tube Kit Replacement	N/A	N/A	N/A	N/A

**SVG\_80C - SVGH\_80SC**

		<u>MR</u>	<u>MS</u>	<u>MA</u>	<u>CP</u>
1A	Burner Assy., SVG180C, 16 osi, 500°F	SVG180C	N/A	SVG180C	SVG180C
1B	Burner Assy., SVG280C, 8 osi, 500°F	SVG280C	N/A	SVG280C	SVG280C
1C	Burner Assy., SVGE680C, Metric, 500°F	SVGE80C	N/A	SVGE80C	SVGE80C
1D	Burner Assy., SVGH180C, 16 osi, 900°F	SVGH180C	N/A	N/A	SVGH180C
1E	Burner Assy., SVGH280C, 8 osi, 900°F	SVGH280C	N/A	N/A	SVGH280C
1F	Burner Assy., SVGHE80C, Metric, 900°F	SVGHE80C	N/A	N/A	SVGHE80C
2	Tile Assy. (3A or 3B Sold Separate)	TileSVG180	N/A	405714-A	405714-A-001
	w/Flange (Option)	TileSVG180	N/A	405714-A	405714-A-001
	L/Mounting (Option)	405567-A	N/A	405714-A	405714-A-001
<b>3A</b>	<b>Kit, Gasket (Standard Temperature)</b>	<b>405723</b>	<b>N/A</b>	<b>405723</b>	<b>405723</b>
<b>3B</b>	<b>Kit, Gasket (High Temperature)</b>	<b>405731</b>	<b>N/A</b>	<b>405731</b>	<b>405731</b>
<b>4A</b>	<b>Flame Rod (Option)</b>	<b>400099x006</b>	<b>N/A</b>	<b>400099x006</b>	<b>400099x006</b>
4B	Scanner (Option) (Separate Line Item)	---	N/A	---	---
<b>5</b>	<b>Igniter Assembly, Spark</b>	<b>53400x028</b>	<b>N/A</b>	<b>53400x028</b>	<b>53400x028</b>
6	Tube Kit Replacement	N/A	N/A	N/A	N/A

NOTE: Parts listed to be available for 5 years. Items shown in red, to be maintained as spares for 10 years.

This page left intentionally blank.

