

Eclipse BoostPak

Packaged Gas Booster Systems

Series MS

Version 3

Medium Flow Simplex

Parameter	Specification							
Model Number	MS3316	MS3314	MS3412	MS4414	MS4617	MS4619	MS4623	MS4628
Assembly Number	10024850	10024851	10024852	10024853	10024854	10024855	10024856	10024857
Booster	HBLC3316-3/4	HB3314-1/2	HB3412-1/2	HB4414-1	HB4617-1	HB4619-2	HB4623-5	HB4628-5
Minimum Flow (cfh)^a	150	1,060	2,320	4,080	7,700	5,900	22,000	9,700
Maximum Flow (cfh)^a	5,500	5,300	11,600	20,400	23,000	17,800	33,000	14,600
Pressure Boost^a	10	9	7	7	13	18	26	34
Turndown	37:1	5:1	5:1	5:1	3:1	3:1	1.5:1	1.5:1
Primary Voltage	b, c, d, e	b, c, d, e	b, c, d, e	c, d	c, d	c, d	c, d	c, d
Motor Horsepower	3/4	1/2	1/2	1	1	2	5	5
Approximate Wt. (lbs)^f	580	530	550	620	780	880	1100	1250

Notes: **a** Ratings are nominal, in CFH of natural gas, at standard conditions and depend on customer interface piping.
b 115/230 VAC, 1Φ, 60Hz
c 230/460 VAC, 3Φ, 60Hz
d 208 VAC, 3Φ, 60Hz
e 208 VAC, 1Φ, 60Hz
f Weight is approximate
 NEMA 4 rating; NEMA 7 rating option available (footprint increases with this option)

Dimensional Information in Millimeters (in)

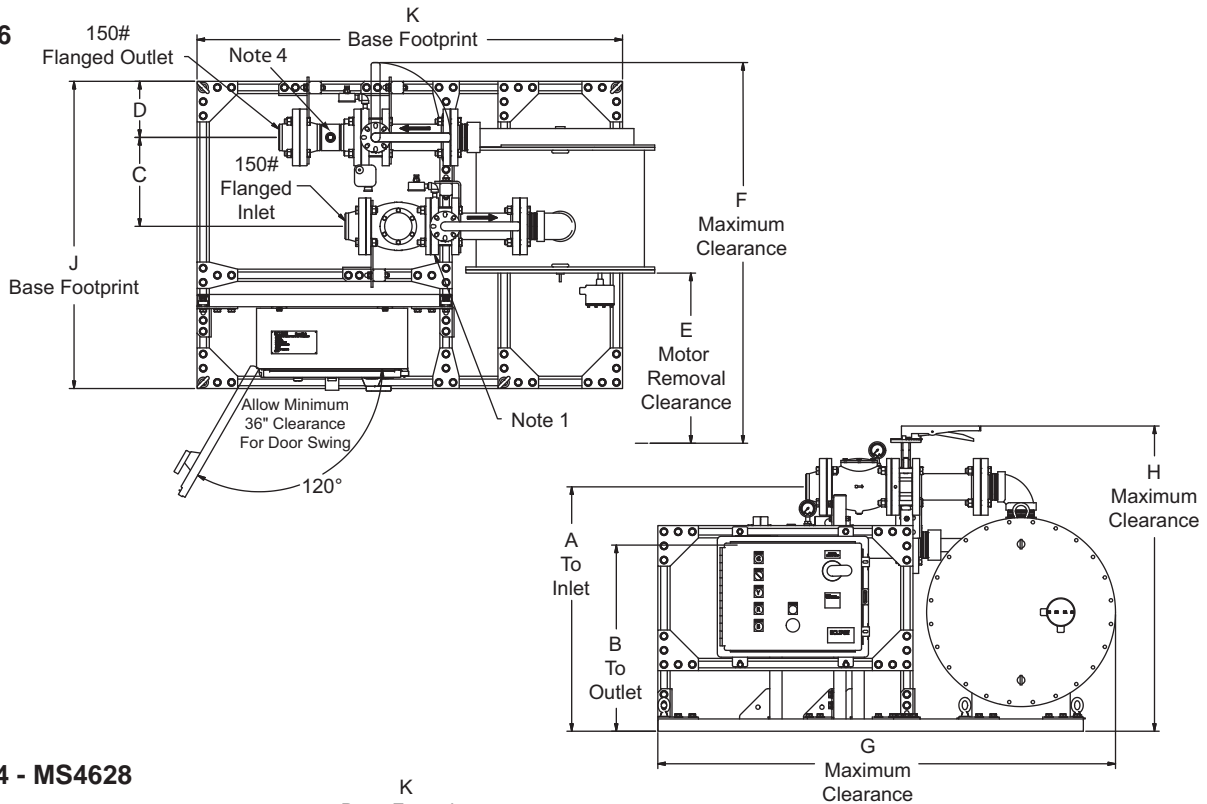
BoostPak	Flange Sizes (150#)		Connection Data			
	Inlet	Outlet	A	B	C	D
MS3316	3	3	822 (32.3)	626 (24.6)	299 (11.8)	189 (7.4)
MS3314	3	3	402 (15.8)	613 (24.1)	167 (6.6)	182 (7.2)
MS3412	4	3	364 (14.3)	553 (21.8)	224 (8.8)	184 (7.3)
MS4414	4	4	402 (15.8)	613 (24.1)	203 (8)	184 (7.3)
MS4617	6	4	435 (17.1)	684 (26.9)	307 (12.1)	187 (7.4)
MS4619	6	4	524 (20.6)	822 (32.4)	308 (12.1)	187 (7.3)
MS4623	6	4	549 (21.6)	895 (35.3)	322 (12.7)	185 (7.3)
MS4628	6	4	625 (24.6)	1054 (41.5)	316 (12.4)	185 (7.3)

BoostPak	Maximum Envelope					
	E	F	G	H	J	K
MS3316	1219 (48)	1927 (75.9)	1538 (60.6)	1026 (40.4)	1033 (40.7)	1450 (56.3)
MS3314	737 (29)	1603 (63.1)	1356 (53.4)	818 (32.2)	883 (34.7)	1300 (51.2)
MS3412	762 (30)	1700 (66.9)	1526 (60.1)	758 (29.8)	983 (38.7)	1475 (58.1)
MS4414	762 (30)	1664 (65.5)	1531 (60.3)	837 (32.9)	983 (38.7)	1475 (58.1)
MS4617	762 (30)	1773 (69.8)	1836 (72.3)	907 (35.7)	1083 (42.6)	1792 (70.6)
MS4619	711 (28)	1683 (66.3)	1890 (74.4)	1046 (41.2)	1083 (42.6)	1802 (70.9)
MS4623	889 (35)	2027 (79.8)	1946 (76.6)	1119 (44)	1158 (45.6)	1881 (74.1)
MS4628	965 (38)	2162 (85.1)	2027 (79.8)	1277 (50.3)	1253 (49.3)	1958 (77.1)

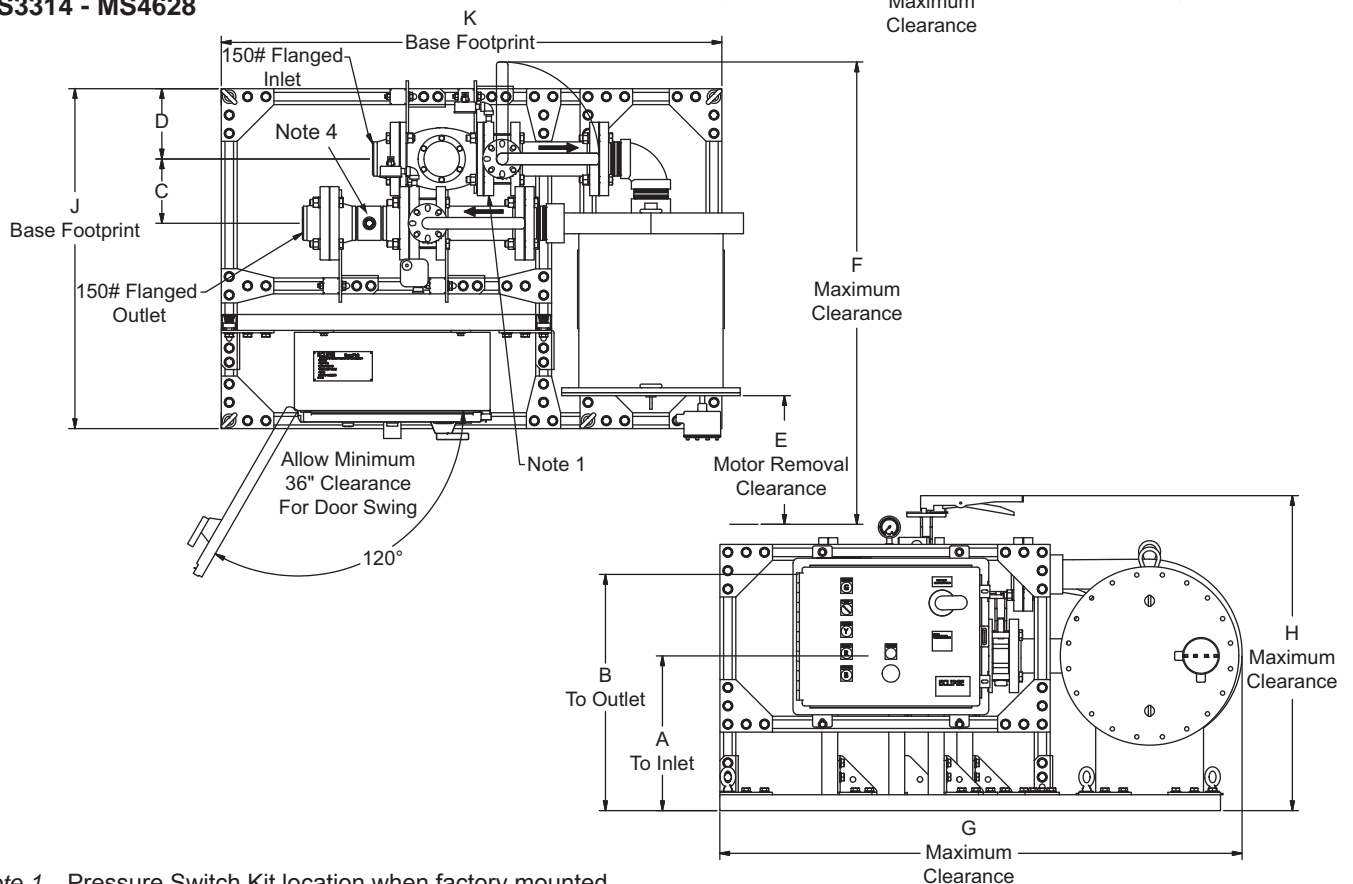
Notes: Dimensions shown are nominal. Variations of 2% may occur due to thread engagement and assembly tolerances.

Dimensions in Millimeters (inches) Medium Flow Simplex

MS3316



MS3314 - MS4628



Note 1 Pressure Switch Kit location when factory mounted.

Note 2 When Pressure Switch Kit is supplied loose by Eclipse, it is to be installed by customer in accordance with local codes.

Note 3 Customer is to secure Boostpak to foundation through unistrut base (customer drilled holes).

Note 4 Dimensions shown are nominal. Variations of 2% may occur due to thread engagement and assembly tolerances.

Note 5 Ensure proper clearances for motor removal.

Note 6 Flow control kit location, when factory mounted.