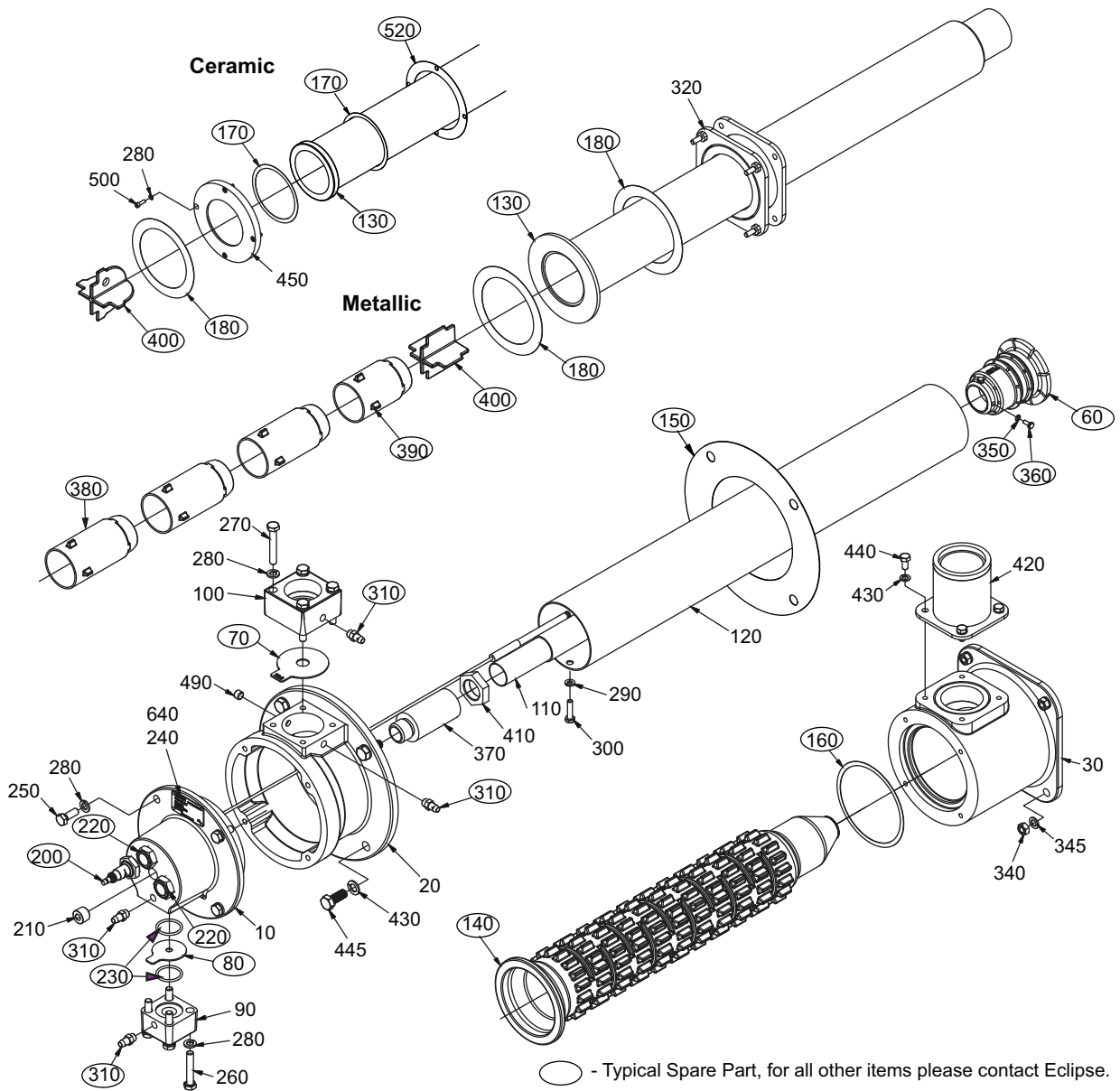


Eclipse Single-Ended Radiant Tube Burners

Model SER 600
Spare Parts List Edition 11.14
Version 5



| Ref | Part Number | Description |
|------------------------------|-------------|---|
| 60 | 10051668 | Nozzle for Burner without Spark Rod Cooling |
| 60 | 10055550 | Nozzle for Burner with Spark Rod Cooling |
| 70 | ----- | Contact Eclipse for your specific burner |
| 80 | ----- | Contact Eclipse for your specific burner |
| 130 | ----- | Contact Eclipse for your specific burner |
| (Continued on the next page) | | |
| 140 | 10050820 | Combustor |
| 150 | 10046827 | Air Inlet Housing to Exhaust Housing Gasket |
| 160 | 10046827-1 | Combustor to Exhaust Housing Gasket |
| 170 | 10046827-2 | Ceramic Outer Tube Gasket |
| 180 | 10046827-3 | Adapter Plate Gasket |
| 200 | 100205-23 | Igniter for Burners without Spark Rod Cooling |
| 200 | 150000-19 | Igniter for Burners with Spark Rod Cooling |
| 220 | 11737 | Peepsight |

| Ref | Part Number | Description |
|-----|-------------|--|
| 230 | 14777 | O-Ring for Fuel Orifice |
| 310 | 13445 | Pressure Tap |
| 350 | 22499 | Lock Washer, M4 |
| 360 | 22498 | Bolt, M4 x 10 |
| 380 | 22337 | Ceramic Inner Tube Section (200mm) |
| 390 | 22338 | Ceramic Inner Tube Section (150mm) |
| 400 | 22339 | Ceramic Inner Tube End Section for Metallic Tubes |
| 400 | 101022386 | Ceramic Inner Tube End Section for Ceramic Tubes |
| 520 | 10051677 | Gasket, Ceramic Horizontal |
| 520 | 101017779 | Gasket, Ceramic Vertical |
| N/S | 10056531 | Cooling Tube Assembly |
| N/S | 101023014-1 | Adapter Flange for V1/V3 to V5 Conversion - 65mm (Former Long) |
| N/S | 101023014-2 | Adapter Flange for V1/V3 to V5 Conversion - 192mm (Former Short) |