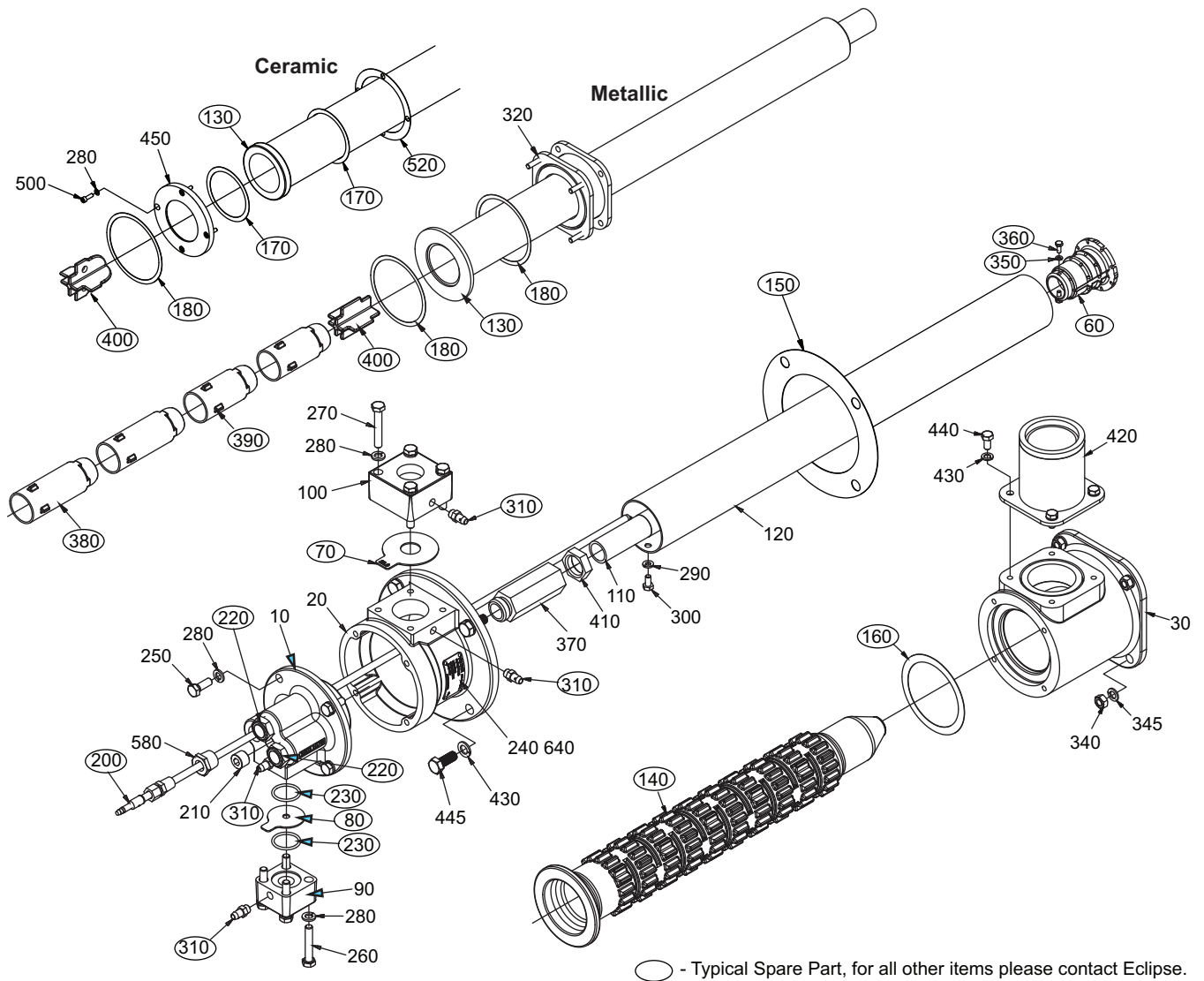


Eclipse Single-Ended Radiant Tube Burners

Model SER 450
Spare Parts List Edition 11.14
Version 5



Ref	Part Number	Description
60	10011071-1	Nozzle for Burner without Spark Rod Cooling
60	10055630	Nozzle for Burner with Spark Rod Cooling
70	-----	Contact Eclipse for your specific burner
80	-----	Contact Eclipse for your specific burner
130	-----	Contact Eclipse for your specific burner
140	10046941	Combustor
150	10047219	Air Inlet Housing to Exhaust Housing Gasket
160	10047219-1	Combustor to Exhaust Housing Gasket
<i>(Continued on the next page)</i>		
170	10047219-2	Ceramic Outer Tube Gasket
180	10047219-3	Adapter Plate Gasket
200	150000-17	Igniter for Burners without Spark Rod Cooling
200	150000-23	Igniter for Burners with Spark Rod Cooling
220	11737	Peepsight
230	14777	O-Ring for Fuel Orifice

Ref	Part Number	Description
310	13445	Pressure Tap
350	22499	Lock Washer, M4
360	22498	Bolt, M4 x 10
380	10011077	Ceramic Inner Tube Section (200mm)
390	10011076	Ceramic Inner Tube Section (150mm)
400	10011078	Ceramic Inner Tube End Section for Metallic Tubes
400	101022385	Ceramic Inner Tube End Section for Ceramic Tubes
520	10051675	Gasket, Ceramic Horizontal
N/S	10055997	Spark Rod Cooling Hose
N/S	10055671	Cooling Tube Assembly
N/S	101023194	Adapter Flange for V1/V3 to V5 Conversion, 145mm (Former Short)
N/S	101023209	Adapter Plate for V1/V3 to V5 Conversion, 3/8" Thick (Former Long)