

# Eclipse ThermJet Self Recuperative Burner

Model TJSR0020-TJSR0100

Thank you for purchasing burners from Eclipse. This Quick Instruction Guide will help with the unpacking and preparing your burners for installation.



Figure 1.

In order to protect the fragile components, self recuperative burners are packaged and shipped partially disassembled.

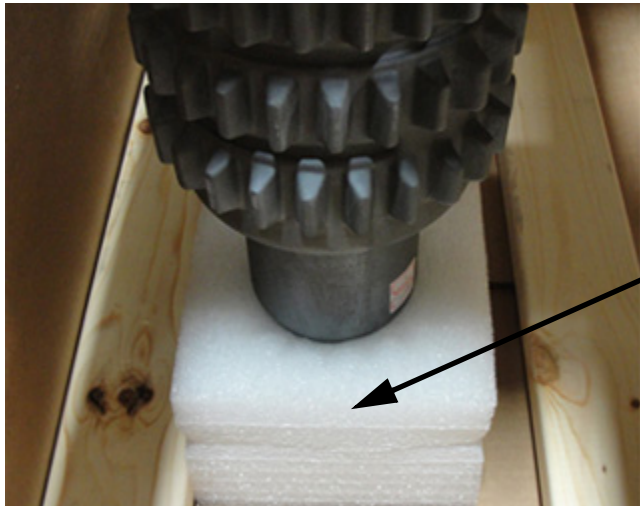
A standard shipment includes the burner air housing/eductor/combustor assembly, the rear cover/nozzle assembly, exhaust tube, extension flanges and spark rods. Your packaging should be similar to Figure 1.



Figure 2.

The exhaust housing and burner rear cover housing are bolted to the frame of the shipping crate. A ratchet or wrench will be required to remove those items from the crate (Figure 2).

**NOTE:** Spark rods and gaskets are either secured in the lower section of the crate or shipped in separate packaging. Ceramic exhaust tubes are also shipped separately. Please do not forget to take care when removing these items.



Each ceramic combustor is supported by a foam insert (Figure 3). Please take caution when removing these from the crate.

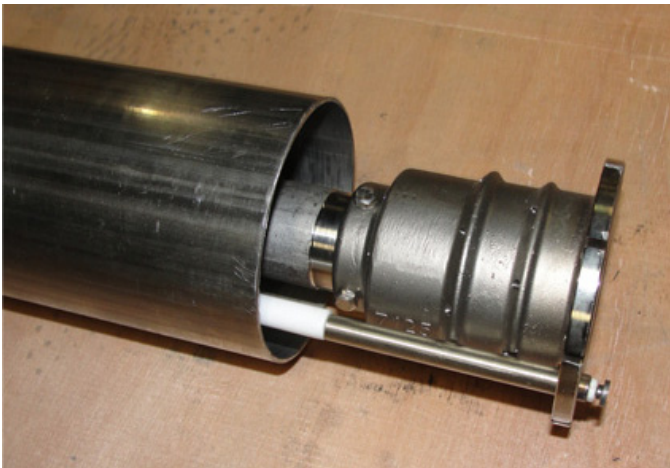
Foam insert

**Figure 3.**



After the items are uncrated, remove the spark rod from the protective tube (Figure 4). The spark rod must be installed into the assembly prior to mounting the burner (Figure 5).

**Figure 4.**



**Figure 5.**



**Figure 6.**

After the rod is installed in the burner, the nozzle and rear cover assembly can be inserted and attached to the air housing.

At this point, your burner is ready to be installed. Please follow the Installation Guide 208 that was supplied with your order to complete the installation.

