

Eclipse RatioStar

Burners

Model RAS

Version 1

Copyright

Copyright 2010 by Eclipse, inc. All rights reserved worldwide. This publication is protected by federal regulation and shall not be copied, distributed, transmitted, transcribed or translated into any human or computer language, in any form or by any means, to any third parties, without the express written consent of Eclipse, inc.

Disclaimer Notice

In accordance with the manufacturer's policy of continual product improvement, the product presented in this brochure is subject to change without notice or obligation.

The material in this manual is believed adequate for the intended use of the product. If the product is used for purposes other than those specified herein, confirmation of validity and suitability must be obtained. Eclipse warrants that the product itself does not infringe upon any United States patents. No further warranty is expressed or implied.

Liability & Warranty

We have made every effort to make this manual as accurate and complete as possible. Should you find errors or omissions, please bring them to our attention so that we may correct them. In this way we hope to improve our product documentation for the benefit of our customers. Please send your corrections and comments to our Technical Documentation Specialist.

It must be understood that Eclipse's liability for its product, whether due to breach of warranty, negligence, strict liability, or otherwise is limited to the furnishing of replacement parts and Eclipse will not be liable for any other injury, loss, damage or expenses, whether direct or consequential, including but not limited to loss of use,

income, or damage to material arising in connection with the sale, installation, use of, inability to use, or the repair or replacement of Eclipse's products.

Any operation expressly prohibited in this manual, any adjustment, or assembly procedures not recommended or authorized in these instructions shall void the warranty.

Document Conventions

There are several special symbols in this document. You must know their meaning and importance.

The explanation of these symbols follows below. Please read it thoroughly.

How To Get Help

If you need help, contact your local Eclipse representative. You can also contact Eclipse at:

1665 Elmwood Rd.
Rockford, Illinois 61103 U.S.A.
Phone: 815-877-3031
Fax: 815-877-3336
<http://www.eclipsenet.com>

Please have the information on the product label available when contacting the factory so we may better serve you.

 ECLIPSE <small>Innovative Thermal Solutions</small>	www.eclipsenet.com
Product Name	
Item #	
S/N	
DD MMM YYYY	



This is the safety alert symbol. It is used to alert you to potential personal injunt hazards. Obey all safety messages that follow this symbol to avoid possible injury or death.



Indicates a hazardous situation which, if not avoided, will result in death or serious injury.



Indicates a hazardous situation which, if not avoided, could result in death or serious injury.



Indicates a hazardous situation which, if not avoided, could result in minor or moderate injury.

NOTICE

Is used to address practices not related to personal injury.

NOTE

Indicates an important part of text. Read thoroughly.



Table of Contents

1 Introduction	4
Product Description.....	4
Typical Operating Range.....	4
Summary.....	4
Audience.....	4
Purpose.....	4
Related Documents.....	4
2 Safety	5
Safety Warnings.....	5
Capabilities.....	5
Operator Training.....	5
Replacement Parts.....	5
3 Installation	6
Introduction.....	6
Handling & Storage.....	6
Approval of Components.....	6
Checklist Before Installation.....	7
Duct Configuration.....	7
Suspending the Burner.....	7
Gas Supply.....	7
Electrical Supply.....	7
Checklist After Installation.....	7
4 Adjustment, Start and Stop	8
Introduction.....	8
Adjustment Procedure.....	8
Adjustment.....	9
Step 1: Preparation.....	9
Step 2: Check Air Pressure Drop.....	9
Step 3: Set Gas Pressure.....	9
Step 4: Start Up.....	9
Step 5: Operating Checks.....	10
5 Maintenance & Troubleshooting	11
Maintenance.....	11
Troubleshooting.....	11
Troubleshooting Guide.....	11
Appendix	i
Conversion Factors.....	i

Introduction

1

Product Description

The RatioStar burners' design is based on ratio controlled philosophy, which means the gas and air are controlled by predetermined settings. The basic design has an excess air percentage of 15% to 20%. Contact Eclipse for lower ratios.

This burner type can be used in case of low oxygen content in the process stream, when good temperature uniformity is required, and in high temperature processes where no standard air heater can be used. The conventional air heat burner design operates on very high excess air values. This generates emissions problems when running on lower capacities because the air flow is constant. Through its relative "cold" flow it quenches the flame thus forming unacceptable CO levels.

The RatioStar is a modular design and can be built into almost every desired configuration. The process (flue gases) can reach 750°C upstream of the burner, and a maximum of 1200°C downstream of the burner without deviating from the basic concept. With its very small dimension, this burner is very attractive in many process applications.

Typical Operating Range

Burner module capacity is 125 kW with a fuel gas pressure of 85 mbar on the gas tip and a flame length of ~ 1.5 meter. The minimum capacity per burner module is 15 kW. This determines the turndown ratio.

Summary

- low resistance that implies hardly any pressure drop added
- easily adapted to required heat release
- can handle process temperatures up to 700°C upstream of the burner and up to 1200°C downstream of the burner without any major changes to the standard design
- extremely good temperature profile through the burner duct
- requires very little space between the interconnecting ducting
- excellent emission figures : CO - NOx - UHC
- single ignition source even at complex configurations, though for practical reasons multiple ignition sources are often used
- the average turndown ratio without staging is 10:1

Audience

This manual has been written for personnel already familiar with all aspects of a gas burner and its add-on components, also referred to as the burner system.

These aspects are:

- Installation
- Use
- Maintenance
- Safety

The audience is expected to be qualified and have experience with this type of equipment and its working environment.

Purpose

The purpose of this manual is to make sure that a safe, effective and trouble-free installation is carried out.

RatioStar Documents

Installation Guide No. 164

- This document

Datasheet Series No. 164

- Required to complete installation

Related Documents

- Burner Parts List and Recommended Spares
- Burner Specifications Sheet
- Burner Operating Data

Safety

Important notices which help provide safe burner operation will be found in this section. To avoid personal injury and damage to the property or facility, the following warnings must be observed. All involved personnel should read this entire manual carefully before attempting to start or operate this system. If any part of the information in this manual is not understood, contact Eclipse before continuing.

Safety Warnings



DANGER

- **The burners, described herein, are designed to mix fuel with air and burn the resulting mixture. All fuel burning devices are capable of producing fires and explosions if improperly applied, installed, adjusted, controlled or maintained.**
- **Do not bypass any safety feature; fire or explosion could result.**
- **Never try to light a burner if it shows signs of damage or malfunction.**



WARNING

- **The burner and duct sections are likely to have HOT surfaces. Always wear the appropriate protective equipment when approaching the burner.**
- **Eclipse products are designed to minimize the use of materials that contain crystalline silica. Examples of these chemicals are: respirable crystalline silica from bricks, cement or other masonry products and respirable refractory ceramic fibers from insulating blankets, boards, or gaskets. Despite these efforts, dust created by sanding, sawing, grinding, cutting and other construction activities could release crystalline silica. Crystalline silica is known to cause cancer, and health risks from the exposure to these chemicals vary depending on the frequency and length of exposure to these chemicals. To reduce the risk, limit exposure to these chemicals, work in a well-ventilated area and wear approved personal protective safety equipment for these chemicals.**

NOTICE

- **This manual provides information regarding the use of these burners for their specific design purpose. Do not deviate from any instructions or application limits described herein without written approval from Eclipse.**

Capabilities

Only qualified personnel, with sufficient mechanical aptitude and experience with combustion equipment, should adjust, maintain or troubleshoot any mechanical or electrical part of this system.

Operator Training

The best safety precaution is an alert and trained operator. Train new operators thoroughly and have them demonstrate an adequate understanding of the equipment and its operation. A regular retraining schedule should be administered to ensure operators maintain a high degree of proficiency.

Replacement Parts

Order replacement parts from Eclipse only. All Eclipse approved valves or switches should carry UL, FM, CSA, CGA and/or CE approval where applicable.

Installation

Introduction

In this section you will find the information and instructions needed to install the burner and system components.



WARNING

- **Only qualified competent personnel with experience of combustion systems are allowed to install, adjust or maintain the burner.**
- **All installation work must be carried out in compliance with current legislated standards.**

Handling & Storage

Handling

- Make sure the area is clean.
- Inspect the burner, ensuring that all components are clean and free from damage.
- Use appropriate support and handling equipment when lifting the burner.
- Protect the burner from weather, damage, dirt and moisture.
- Protect the burner and components from excessive temperatures and humidity.

Storage

- Make sure the components are clean and free of damage.
- Store the components in a cool, clean, dry room.
- After making sure everything is present and in good condition, keep the components in original packages as long as possible.

Approval of Components

Limit Controls & Safety Equipment

All limit controls and safety equipment must comply with all applicable local codes and/or standards and must be listed for combustion safety by an independent testing agency. Typical application examples include:

- American: NFPA 86 with listing marks from UL, FM, CSA
- European: EN 746-2 with CE mark from TuV, Gastec, Advantica

Electrical Wiring

All the electrical wiring must comply with all applicable local codes and/or standards such as:

- NFPA Standard 70
- IEC60364
- CSA C22
- BS7671

Gas Piping

All the gas piping must comply with all applicable local codes and/or standards such as:

- NFPA Standard 54
- ANSI Z223
- EN 746-2

Where to Get the Standards:

The NFPA Standards are available from:

National Fire Protection Agency
Batterymarch Park
Quincy, MA 02269
www.nfpa.org

The ANSI Standards are available from:

American National Standard Institute
1430 Broadway
New York, NY 10018
www.ansi.org

The UL Standards are available from:

333 Pfingsten Road
Northbrook, IL 60062
www.ul.com

The FM Standards are available from:

1151 Boston-Providence Turnpike
PO Box 9102
Norwood, MA 02062
www.fmglobal.com/approvals

Information on the EN standards and where to get them is available from:

Comité Européen de Normalisation
Stassartstraat 36
B-1050 Brussels
Phone: +32-25196811
Fax: +32-25196819
www.cen.eu

Comité Européen de Normalisation Electronique
Stassartstraat 36
B-1050 Brussels
Phone: +32-25196871
Fax: +32-25196919
www.cenelec.org

Checklist Before Installation

Access

Install the burners so they may be easily accessed for inspection and maintenance.

Environment

Make sure the local environment matches the original operating specifications. Check the following items:

- Voltage, frequency and stability of the electrical power
- Fuel type and supply pressure of the fuel
- Availability of enough fresh, clean combustion air
- Humidity, altitude and temperature of air
- Presence of damaging corrosive gases in the air
- Prevent direct exposure to water

Duct Configuration

NOTE: The ducting for the burner, which normally is in the combustion chamber, should be designed to provide a uniform velocity distribution of process air around the burner. Only 25% deviation from this uniformity is allowed.

The duct, with or without a profile plate, should ensure an actual velocity of 5 to 25 m/s along the burner.

NOTE: Make sure the pressure drop is also within the above range when starting up. When it is calculated with preheated process air, the pressure drop can be considerably lower.

Suspending the Burner

RatioStar burners are normally delivered inside a duct and suspended. In exceptional cases, the burner is delivered loose or on a mounting plate and then the suspension needs to be done by the client.



- **Suspensions should allow for thermal expansion of the burner and duct as the temperature of the components increase. Piping expansion joints should be used outside of the duct to accommodate movement of the duct section when heated.**

Gas Supply

The burner should not be used as a support for the incoming gas supply pipe work. Suitable brackets or hangers should be provided for this purpose. Care should be taken to ensure that the incoming gas pipe is adequately sized for the necessary gas flow and burner pressure. The necessary gas pressures for the different gas types are presented in Ratiostar Datasheet 164.

Electrical Supply

The burner should be controlled via a sequence programmer, approved according to the local standards. For connections, please refer to the related wiring diagrams.



- **Wiring to the burner must be in accordance with current wiring standards. It is vital that the live and neutral wires are connected correctly as reversal could present a hazard. Also the ground must be checked to ensure a good connection.**
- **Gas pipe work must NOT be used for grounding purposes.**

Checklist After Installation

To verify the system was properly installed, perform the following checks:

1. Be sure there are no leaks in the gas lines.
2. Be sure all wiring is properly connected.
3. Be sure all interlocks are working properly.
4. Be sure correct air and gas pressures are available.
5. At systems with high negative or positive process pressures, take care that pressure switches and pressure regulators (purge air) are cross connected to the process pressure.

Adjustment, Start & Stop

4

Introduction

In this chapter you will find instructions on how to adjust, start, and stop the burner system. Become familiar with burner control methods before attempting to make adjustments.



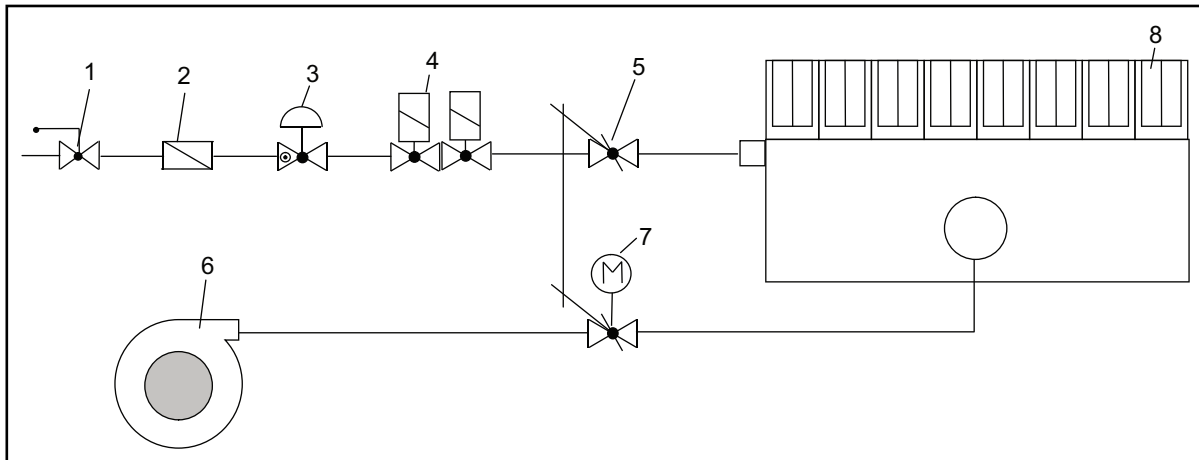
DANGER

- Do not bypass any safety features; fires or explosion could result.
- Never try to light a burner if it shows signs of damage or malfunction.
- Obey the safety precautions in the Safety chapter.

NOTE: Adjustment requires two manuals, this Installation Guide and Datasheet 164.

Adjustment Procedure

Below a typical P&ID is presented for a RatioStar with gas train.



Ref. No.	Description
1	Gas cock
2	Gas filter
3	Gas pressure controller
4	Double solenoid valve
5	Gas control valve
6	Blower
7	Air control valve with actuator
8	Burner

Typically the gas input is controlled by means of a motor driven butterfly valve (5). The pressure before the motor is set with a gas pressure controller (3) which then is determining the maximum input. The combustion air is also driven by a motor driven butterfly valve. The butterfly valve of gas and air are mechanically or electronically linked. The air flow should be set so that in maximum input the burner is firing at approximately lambda 1.15 to 1.3. At turndown this lambda stays almost constant, but increases to approximately lambda 2.5 in the minimum 1:10.

NOTE: This P&ID is for working principle only. Check your local regulations for more safety requirements.



CAUTION

- Because the burner is generally used as an air heat burner, the process (fan) has to be in operation when starting up the burner. Otherwise the system can become overheated.

Adjustment

Step 1: Preparation

1. Ensure that all installation work has been completed in compliance with current legislated standards.
2. Ensure that all gas supply pipe work has been purged of air in compliance with current legislated standards.
3. Ensure that all required services are available.
4. Ensure that all pre-checks have been completed in compliance with current legislated standards.
5. Ensure that the following instruments are available
 - digital or "U" - tube manometer for pressure adjustments.
 - μ A- meter to measure flame signal strengths.
6. Check the setting of the maximum gas pressure switch and the minimum air pressure switch. The maximum gas pressure switch is adjusted 20% higher than the maximum gas pressure. The minimum differential air pressure switch is adjusted approximately 20% below the minimum air pressure.

Step 2: Check Air Pressure

The combustion air pressure to the burner has to be measured. This combustion air pressure drop over the stabilization plate should be 2.5 mbar at maximum fire. The combustion air fan has to supply enough air to achieve this value.

NOTE: The ΔP over the stabilization plates needs to be measured to the process pressure. For this enough pressure taps need to be fitted and supplied.

Step 3: Set Gas Pressure

Adjust the maximum gas pressure before the burner according to the adjustment data for the specific type of gas found in the datasheet.

Step 4: Start-Up

Start-up procedure:

1. Check the presets of the adjustment valves.
2. Switch the control motor to "automatic".
3. Open the manual isolating ball valve.
4. Initiate the burner management system to start the operating sequence. The control motor will be controlled to the start position, after which the ignition will take place.

The ignition support flame should appear approximately 5 - 20 cm beyond the flame shields in a mixed blue and yellow color. If the flame is too weak or too big, adjust the support flame with the adjusting valve. Support flame appearance also depends on the start position of the combustion air valve.

After the pre-ignition time (2 seconds according to EN 746-2) the second shut-off valve will open, and the RatioStar burner will ignite.

At every burner nozzle a small rotating flame will appear.

5. If the burner does not light the first time, reset the burner programmer and follow this procedure again:
 - a. Attempt to ignite the burner again after purging air from the gas piping.
 - b. If the support flame does not appear, open the adjusting valve one turn.
 - c. If the flame appears at ignition but the main burner does not light, adjust the minimum setting of the servo motor so that a higher minimum input will be used.
 - d. Repeat steps b and c until the burner ignites. If the burner does not ignite, follow the guidelines in section 5, "Maintenance and Troubleshooting".

Low Fire Settings

6. At low fire, the separate flames at every nozzle should at least touch each other. With the RatioStar, the low fire input depends on the air pressure drop across the burner. At the highest pressure drop, the minimum input is 10% of the maximum. At the lowest pressure drop, the minimum input can go as low as 2.5% of the maximum. Setting the minimum can be done visually or with pressure.

NOTE: The pressure drop across the burner changes with the temperature of the incinerator. Starting the burner should be possible at low temperatures as well as at high temperatures. Adjustment of the minimum input should be done at the highest pressure drop, which can occur in the operating of the incinerator.

High Fire Settings

6. Set the burner to high fire:

Adjust the corresponding gas pressure with the pressure controller.

NOTE: A visual check of the flame is important to ensure the correct burner adjustment. The flame will be bright yellow at higher capacities. The flame shape should be approximately equal from all modules or nozzles.

Step 5: Operating Checks

1. Simulate a flame out condition by closing the manual inlet ball valve. Run the ignition cycle again.
2. Check the high gas pressure switch for correct operation by reducing the set point until it trips. The burner must be at high fire. Reset it to the original setting, and run the ignition cycle again.
3. Check the process air differential pressure switch for correct operation by decreasing the set point until it trips. Reset to the original setting and run the ignition cycle again.
4. Measure and record the gas and air differential pressures and the flame signal at low and high fire for future reference.



DANGER

- **If simulated limits or simulated flame failures do not shut down the fuel system within the required response time, immediately correct the problem before proceeding.**

Maintenance & Troubleshooting

Maintenance

Preventative maintenance is the key to a reliable, safe and efficient system. The core of any preventative maintenance program is a list of periodic tasks.

NOTE: These are guidelines only. The customer should make the final judgement on maintenance intervals and tasks to be performed while considering the working environment.

Subject	Action	Interval					
		1 month after commissioning	3 months	6 months	12 months	as per suppliers instructions	depending on circumstances
Adjustments	Check and compare burner adjustments with the original recorded settings. Correct settings if they are outside the specified tolerance range.	X			X		
Gas filter	Check and clean or replace the gas filter if necessary.	X			X		
Gas components	Check all components for damage (visually)		X				
	Leak test shut-off valves				X		
	Check manual shut-off valve for correct operation		X				
Cables and connectors	Visually check all cables and connectors for damage and tightness.		X				
Gas piping	Check all gas piping and connections for leakage. Leakages must be solved immediately.	X			X		
	Check tightness of all bolted / screwed joints.	X			X		
Flame safety	Check the interlocks by simulating fault conditions. Resolve all flame safety problems before re-starting the burner				X		
	Replace the UV sensor within the time frame as specified by the supplier of the UV scanner					X	
Igniter / flame rod	Check and clean or replace the flame rod and igniter			X			
Thermal overload	Check the direct burner surroundings for signs of excessive corrosion or deformation due to thermal overload. Repair or replace insulation or thermal protection shields if necessary.	X			X		

Troubleshooting

Trouble shooting of electrical circuits should be done by qualified plant electricians, technicians or engineers

experienced in all facets of this type of combustion equipment.

Problem	Possible Cause	Solution
Cannot initiate a start up sequence.	External interlock failure.	Check all external interlocks.
	High gas pressure switch has activated.	Check pressure switch settings. (See paragraph 5, step 1).
	Malfunction of the burner programmer.	Have a qualified electrician troubleshoot and correct the problem.
	No power supply to the burner programmer.	Have a qualified electrician troubleshoot and correct the problem.
Burner sequence starts but locks out before ignition.	Process air fault; Process blower failure.	Check blower and remedy fault.
	Process air fault; 3 way solenoid valve failure (if fitted).	Check solenoid valve. Replace coil if necessary.
Burner start up sequence runs but does not light.	No ignition; There is no power to the ignition transformer.	Restore power to the ignition transformer.
	No ignition; Open circuit between the ignition transformer and the ignition electrode.	Repair or replace wiring to the ignition electrode.
	No ignition; The ignition electrode needs cleaning.	Clean the ignition electrode.
	No ignition; The ignition electrode is not properly grounded to the burner.	Clean the threads on the ignition electrode and the burner.
	No ignition; Ignition electrode insulator is broken.	Inspect the ignition electrode and replace if broken.
Burner start up sequence runs but does not light.	Not enough gas; The support gas valve is not opening.	Check wiring to the support gas valve. Check the output from the burner programmer.
	Not enough gas; The support gas flow is adjusted too low.	Open adjusting valve 1 turn.
Support flame appears, but main burner does not ignite.	Not enough gas; 2nd shut-off valve not opening.	Check wiring to the 2nd shut-off valve. Check the output from the burner programmer. Open manual ball valve. Replace coil if necessary.
	Not enough gas; Butterfly valve should be more open at minimum fire.	Increase the minimum position of the butterfly valve.
Burner lights and then goes to lock-out.	No flame signal; Broken flame rod. Dirty UV scanner lens.	Measure flame signal. Inspect and clean sensor. Replace if necessary.
	No flame signal; Ignition electrode and flame rod connections reversed.	Exchange spark electrode/flame rod wiring.
At minimum input one or more modules have no flame.	Minimum fire is too low; Butterfly valve should be more open at minimum fire.	Increase minimum gas with minimum position butterfly valve.
Burner does not reach its specified capacity.	Not enough gas; Gas pressure into the butterfly valve is too low.	Check for sufficient gas pressure.



Appendix

Conversion Factors

Metric to English

From	To	Multiply By
actual cubic meter/h (am ³ /h)	actual cubic foot/h (acfh)	35.31
normal cubic meter/h (Nm ³ /h)	standard cubic foot /h (scfh)	38.04
degrees Celsius (°C)	degrees Fahrenheit (°F)	(°C x 9/5) + 32
kilogram (kg)	pound (lb)	2.205
kilowatt (kW)	Btu/h	3415
meter (m)	foot (ft)	3.281
millibar (mbar)	inches water column ("w.c.)	0.402
millibar (mbar)	pounds/sq in (psi)	14.5 x 10 ⁻³
millimeter (mm)	inch (in)	3.94 x 10 ⁻²
MJ/Nm ³	Btu/ft ³ (standard)	26.86

Metric to Metric

From	To	Multiply By
kiloPascals (kPa)	millibar (mbar)	10
meter (m)	millimeter (mm)	1000
millibar (mbar)	kiloPascals (kPa)	0.1
millimeter (mm)	meter (m)	0.001

English to Metric

From	To	Multiply By
actual cubic foot/h (acfh)	actual cubic meter/h (am ³ /h)	2.832 x 10 ⁻²
standard cubic foot /h (scfh)	normal cubic meter/h (Nm ³ /h)	2.629 x 10 ⁻²
degrees Fahrenheit (°F)	degrees Celsius (°C)	(°F - 32) x 5/9
pound (lb)	kilogram (kg)	0.454
Btu/h	kilowatt (kW)	0.293 x 10 ⁻³
foot (ft)	meter (m)	0.3048
inches water column ("w.c.)	millibar (mbar)	2.489
pounds/sq in (psi)	millibar (mbar)	68.95
inch (in)	millimeter (mm)	25.4
Btu/ft ³ (standard)	MJ/Nm ³	37.2 x 10 ⁻³

European Region - Manufacturing Plants and Offices

Manufacturing / Sales / Services

Eclipse Combustion bv - Netherlands
P.O. Box 37
2800 AA
Gouda, Netherlands

Phone: (31)-182-556-222
Fax: (31)-182-556-280
Email: info@eclipsecombustion.com

Eclipse Combustion, Ltd. - UK
13, Roman Way Business Centre
Droitwich Spa, Worcestershire, WR9 9AJ
United Kingdom

Phone: +44-(0)-1905-795900
Fax: +44-(0)-1905-794923
Email: eclipseuk@eclipsecombustion.com

Eclipse Combustion SLU - Spain
Santander, 71
08020, Barcelona
Spain

Phone: +34-93-4980400
Fax: +34-93-4980410
Email: eclipseSE@eclipsenet.com

Sales / Services

Eclipse Combustion Paris - France
12 Avenue des Pres BL127
78180 Saint Quentin en Yvelines
Cedex
Montigny Le Bretonneux
France

Phone: +33-139304650
Fax: +33-139304651
Mobile Phone: +33-607286492
Email: eclipseFR@eclipsenet.com

Eclipse Combustion GmbH - Hagen
Profilstrasse 13 D-58093 Hagen
(Shpg.)
Hagen, 58136, Germany

Phone: (49)-2331-95860
Fax: (49)-2331-958651
Email: info@eclipsecombustion.com

European Representation - Sales / Services

Belgium	Denmark	Greece	Norway	Poland	South Africa	Turkey
Czech Republic	Finland	Italy	Russia	Slovenia	Sweden	

Other Locations

Americas

Eclipse Combustion Inc. USA

Phone: (815)-877-3031

Asia

Eclipse Combustion Equipment (Suzhou) Co. Ltd.

Phone: (86)-512-62812998
Fax: (86)-512-62812998
Email: drevill@eclipsenet.com