


Eclipse AH-MA DualBlock

Burners

Model DB0700C

Version 1

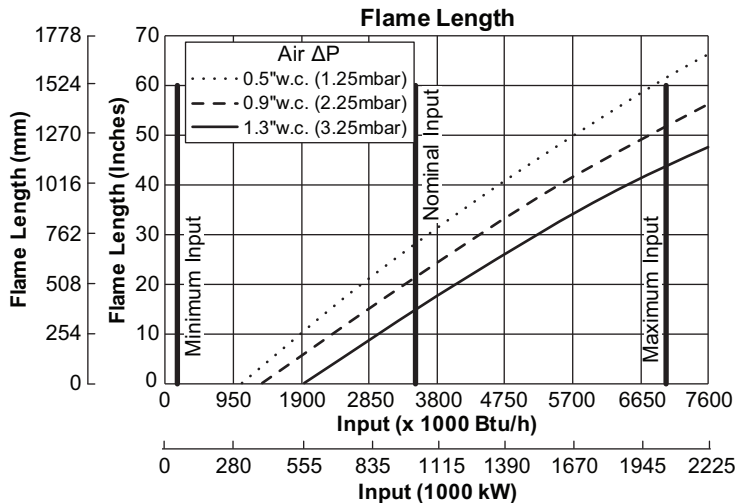
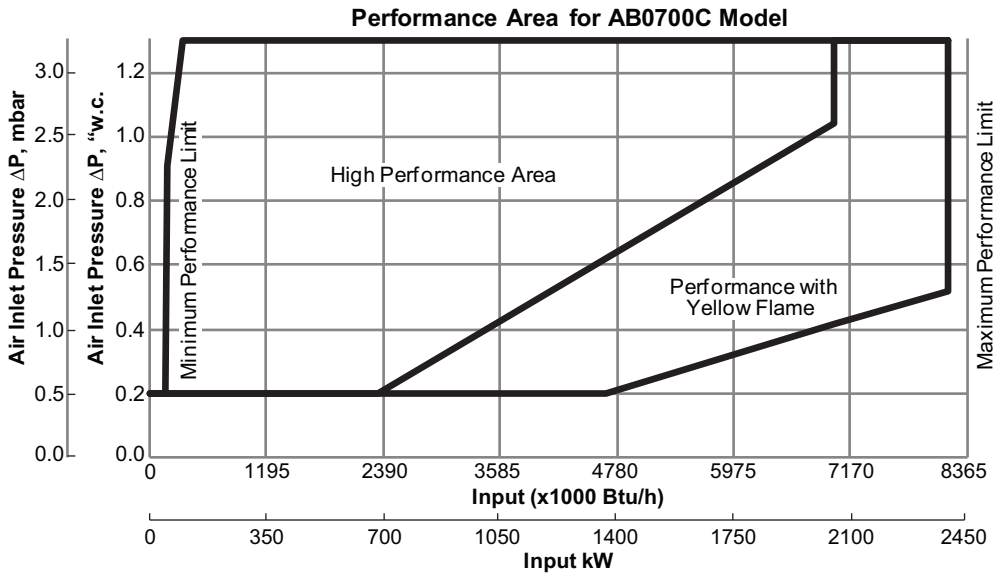
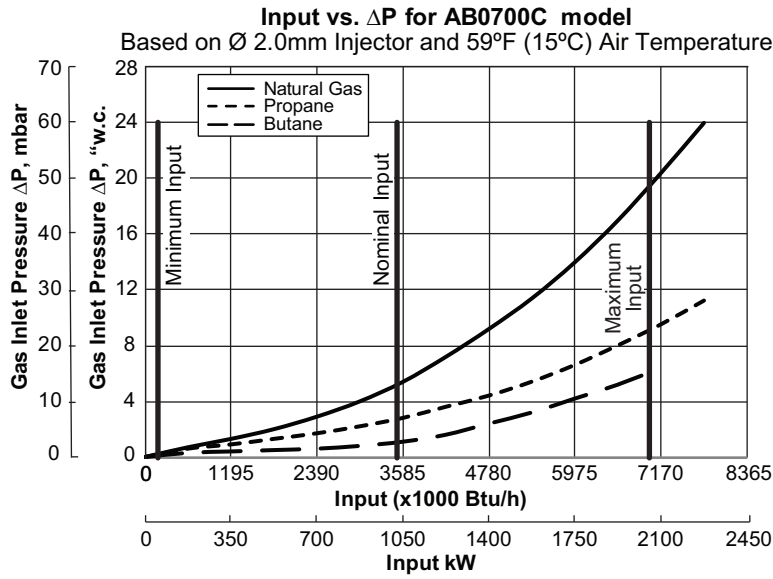
| Parameter | Specifications |
|--|--|
| Maximum Input, Btu/h (kW) | 7,000,000 (2000) |
| Nominal Input, Btu/h (kW) | 3,500,000 (1000) |
| Minimum Input, Btu/h (kW) | 175,000 (50) |
| Excess Air Flow | 1.5 to 3.0 |
| Standard Regulation (maximum) | 20:1 (40:1) |
| Chamber Pressure, "w.c. (mbar) | -2.41 to 1.60 (-6 to 4) |
| Maximum Temperature Increase, °F (°C) | 752 (400) |
| Duct Process Velocity ft/s (m/s) | 16.4 to 66 (5 to 20) |
| Ignition | Spark Ignited Pilot |
| Built-in Pilot | Interruptible Pilot for Natural Gas, Propane or Butane |
| Gas Pilot Pressure dP, "w.c. (mbar) | Natural Gas: 0.6 to 1.2 (1.5 to 3.0) Propane: 0.25 to 0.5 (0.6 to 1.2) Butane: 0.2 to 0.4 (0.5 to 1.0) |
| Gas Pilot Input, Btu/h (kW) | 25,000 to 35,000 (7 to 10) |
| Flame Detection | Flame rod or UV Scanner |
| Flame Length, inches (mm) | 20 to 50 (500 to 1250) |
| Pipe Threads | BSP or NPT |
| Fuels <i>For any other mixed gas, contact Eclipse, Inc.</i> | Natural Gas, Propane or Butane |
| Maximum Air Flow, m ³ /h | 3000 |
| Blower Motor Input, HP (kW) | Low Pressure*: 2.95 (2.2) High Pressure**: 5.36 (4.0) |
| Minimum Blower Air Pressure, "w.c. (mbar) | Low Pressure*: 2.4 (6) High Pressure**: 3.2 (8) |
| Weight including Blower, lbs (kg) | Low Pressure*: 441 (200) High Pressure**: 478 (217) |
| Weight without Blower, lbs (kg) | 355 (161) |
| Approvals |  AИ30 |

* Low Pressure= -2.4 "w.c. (-6 mbar) to 0.4 "w.c. (1 mbar).

** High Pressure= 0.4 "w.c. (1 mbar) to 1.6 "w.c. (4 mbar).

- All information is based on laboratory testing in neutral (0.0"w.c./mbar) pressure chamber. Different chamber size and conditions may affect the data.
- All inputs based upon gross calorific values.
- Eclipse reserves the right to change the construction and/or configuration of our products at any time without being obliged to adjust earlier supplies accordingly.

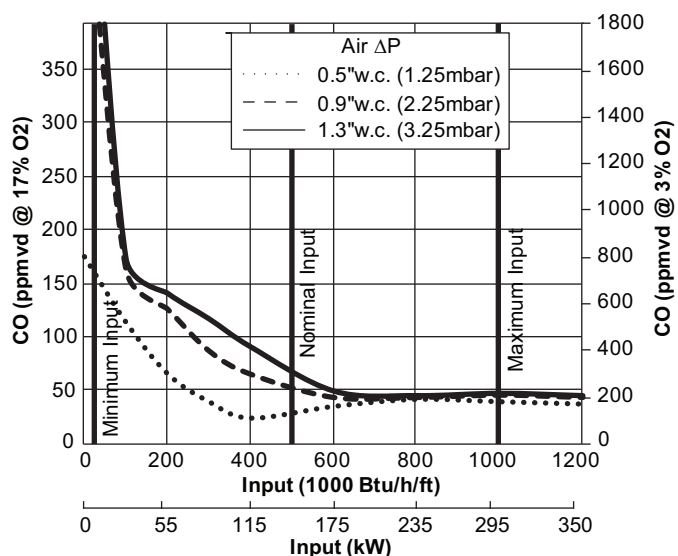
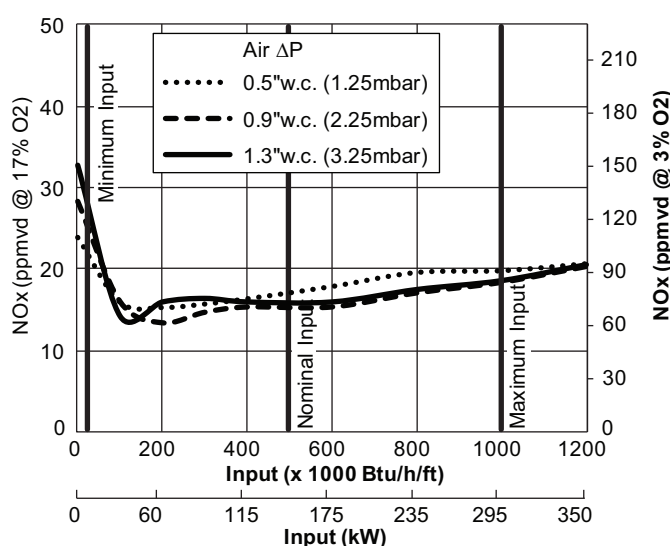
Specifications Graphs



NOTE: Flame length may vary slightly from these values depending on actual fuel, air handling system, duct configurations and profile plates uses.

Air ΔP = Air "Burner + Internal Diffuser" pressure drop.

Emissions Data



NO_x and CO emission data is given for:

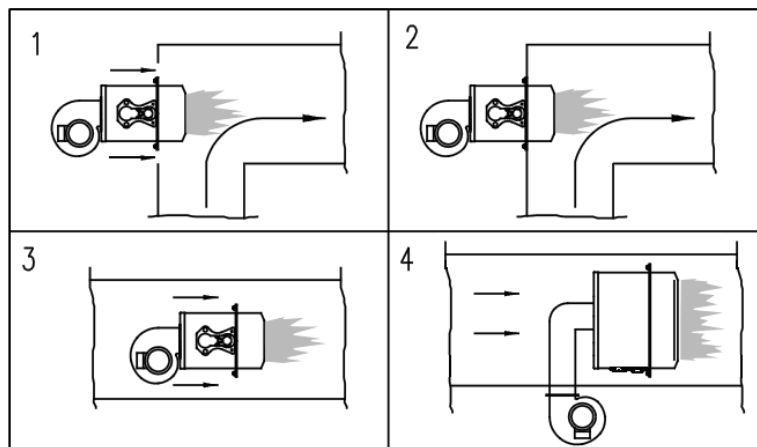
- Ambient combustion air ~70°F (21°C)
- Minimal process air velocity
- Neutral chamber pressure
- Natural gas

Emissions are influenced by:

- Chamber conditions
- Fuel type
- Firing rate

CO emissions are largely influenced by chamber conditions. Contact your local Eclipse representative for an estimate of CO emissions on your application.

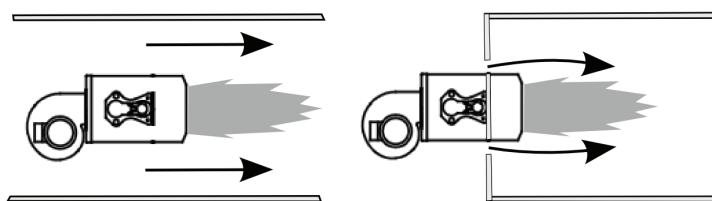
Process Flow Considerations



- 1 - External mounting, with air intake slot
- 2 - External mounting
- 3 - Internal mounting, fresh process air used
- 4 - Internal mounting, external air used

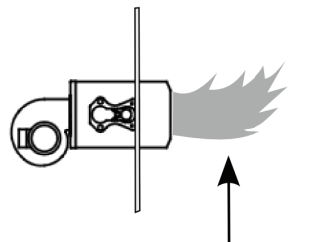
Contact Eclipse for other air conditions

Parallel Process Flow



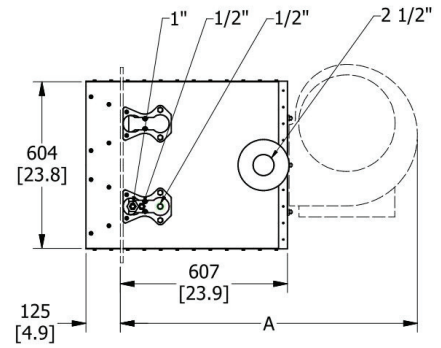
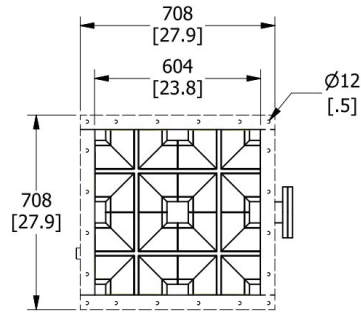
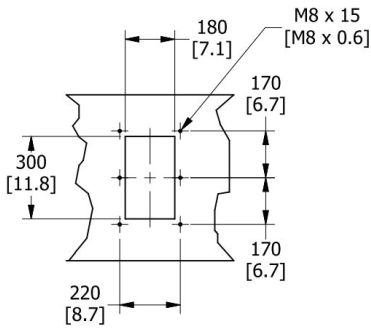
Minimum Velocity: 500 fpm (2.5 m/s)
 Maximum Velocity: 6000 fpm (31 m/s)
 Optimum Velocity: 1000 to 4000 fpm (5 to 20 m/s)

Perpendicular Process Flow

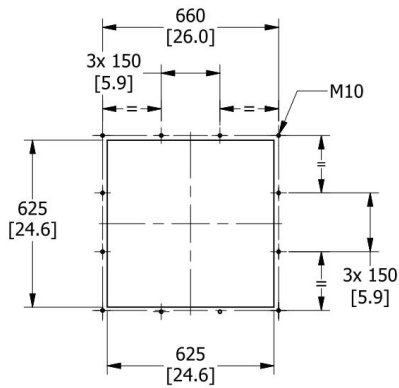


Minimum Velocity: 500 fpm (2.5 m/s)
 Maximum Velocity: 1200 fpm (6 m/s)

Dimensions in mm (inches)

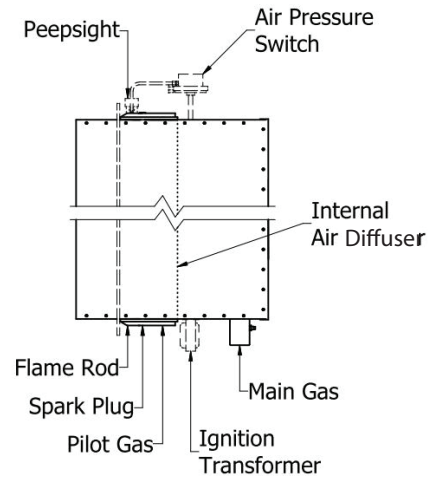


Wall Mounting Flanges (Customer Supplied)



Connections and Components

Built-in Pilot Gas



| Blower Dimensions, mm (inches) | Low Pressure (-6 to +1 mbar) | High Pressure (+1 to +4 mbar) |
|--------------------------------|------------------------------|-------------------------------|
| A | 1034 (40.7) | 1133 (44.6) |