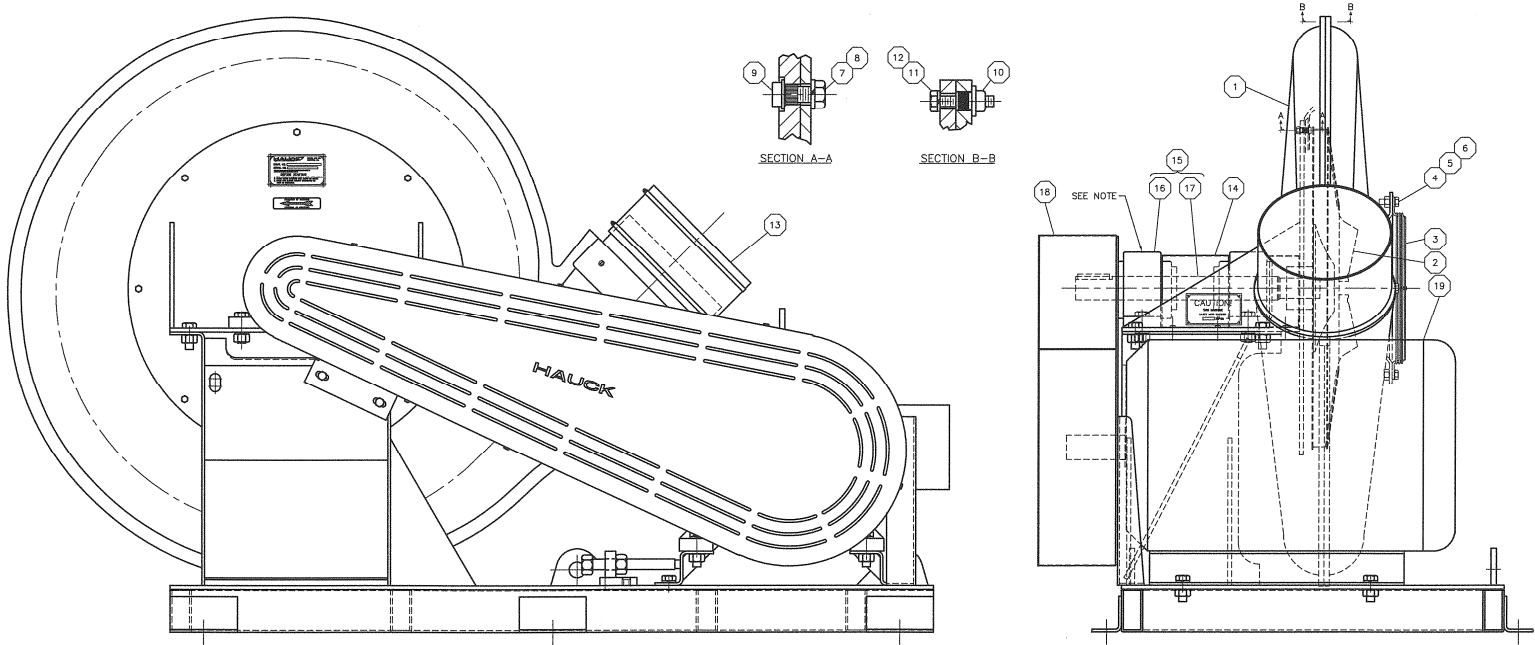




**TURBO BLOWER
TBAB50 SERIES – BELT DRIVE
OIL AND GREASE BEARING
METRIC MOTOR**



NOTE:
FOR OIL BEARINGS, FILL WITH SAE #10 OIL (NON-DETERGENT)
FOR GREASE BEARINGS, FILL WITH CHEVRON BRB GREASE
(3) 1 OZ. CUPSFULL OF GREASE REQ'D FOR EACH DRY BEARING
FOR AUTOMATIC LUBRICATOR, USE REPLACEMENT CARTRIDGE LISTED BELOW

Y7488
(NOT TO SCALE)

<u>Key No.</u>	<u>Description</u>
1	Casing Assembly (2 pcs, Front & Rear)
2	Impeller
3	Intake Guard
4	Screw, Intake Guard
5	Washer, Intake Guard
6	Nut, Intake Guard
7	Screw, Casing Mounting
8	Washer, Casing Mounting
9	Nut, Casing Mounting
10	Nut, Casing Flange

<u>Key No.</u>	<u>Description</u>
11	Screw, Casing Flange
12	Washer, Casing Flange
13	Flexible Sleeve & Clamps
14	Shaft Shield
15	Shaft & Bearings
16	Bearing
17	Shaft
18	Belt Cover Assembly
19	Motor

Model No. TBAB9	Part No.	Casing (CCW)	Impeller (CCW)	Guard	Sleeve & Clamps	Shaft & Bearings	Shaft	Bearings	Belt Cover Assembly	Motor
1600-18.5 kW	401985	44087	44047	400376	801803	400375	400377	300177	401991	301021
1600-30 kW	401986	44089	44022	400361	801804	400366	400368	300172	401991	301022
1600-37 kW	401987	44089	44066	400361	801804	400359	400362	300172	401991	301023
1600-55 kW	401988	44091	39462	400351	801805	400349	400352	300171	401991	301024
1600-75 kW	401989	44091	44073	400332	801805	400357	400330	300162, 400335	401991	301025
1600-90 kW	401990	44091	44073	400332	801805	400357	400330	300162, 400335	401991	301026

The Following Parts Are Common To All Blowers:

Key No.	Description	Part No.
4	Screw, Intake Guard	7239x012
5	Washer, Intake Guard	7253
6	Nut, Intake Guard	7240
7‡	Screw, Casing Housing	7243x008 7243x010 7243x012
8	Washer, Casing Mounting	7077
9	Nut, Casing Mounting	15318
10	Nut, Casing Flange	19664
11‡	Screw, Casing Flange	7254x010 7254x012 7254x014
12	Washer, Casing Flange	7070

Grease lubricator replacement cartridge 303377
(where applicable).

‡ Screw length may vary depending upon blower casing thickness.