

WinPADS LIS-200

Parameter and readout software
for data loggers
and volume correctors



Applications

The WinPADS LIS-200 series is used in connection with a PC to configure and read out ELSTER volume correctors and data loggers.

Brief information

Using WinPADS LIS-200, all values of the following LIS-200 system devices can be set, read and changed.

- Data loggers: DL210, DL220, DL240
- Volume correctors: TC210, EK210, EK220, EK230, EK260

Commissioning: The user-friendly setting of values required for commissioning, e.g. the pulse value of the connected gas meter or the gas analysis data for volume correction with K-value calculation, is possible via the optical interface of the devices.

System connection: If the devices are integrated into a data acquisition system, the parameters required for identification such as customer number and meter location number can be set in the devices in accordance with requirements.

Remote configuration: Subsequent changes to the device settings can be carried out via a connected modem or network connection (TCP/IP) by remote data transfer (RDT) without having to visit the station (exception: parameters which are secured by the calibration lock).

Applications: In addition to the basic settings, the additional function parameters, e.g. the outputs for pulse transmission or the configuration of the MODBUS protocol can also be set easily. Furthermore, comprehensive configurations (parameter profiles) can be downloaded directly onto the device in the form of files. Reading out and saving the entire device configuration is also possible.

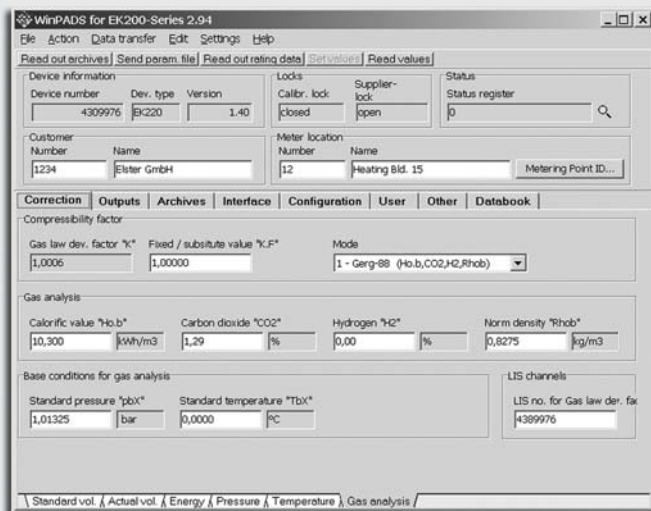
Reading archive data: The content of device archives and logbooks can be read out and displayed directly using WinPADS. In addition, the archives can also be saved as ASCII files and are therefore available for further processing, e.g. using Microsoft EXCEL or an energy data management system. Alternatively, a pocket PC (PDA) with the Read Mobile RM200 software module can also be used instead of a PC with the WinPADS software. Data can be directly archived and evaluated using the ELSTER program, WinLOOK.

Main features

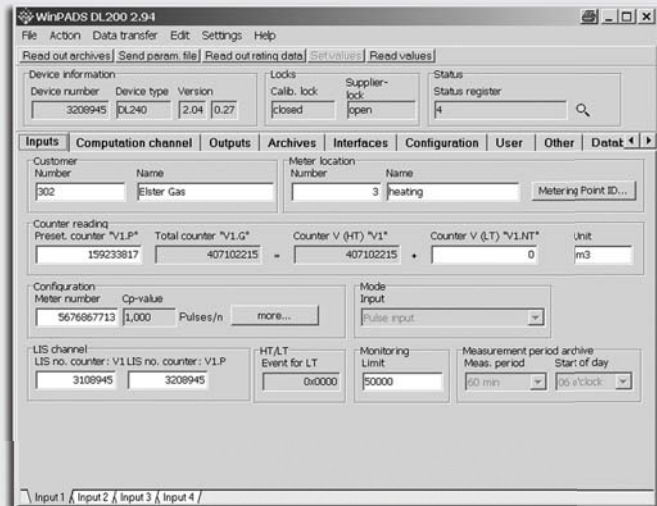
- Settings for:
 - inputs
 - outputs
 - archive
 - configuration
- Adjustment of analogue pressure and temperature sensors for volume correctors
- Display of actual status
- Display and deletion of status registers
- Download of parameter profiles and readout of essential data
- Readout of all archive data via optical interface or remote data transfer
- Presentation of the archive content and export the data in ASCII format
- Simple installation and operation
- Versions with the appropriate authorization for
 - customers
 - suppliers
 - test centres

WinPADS LIS-200: Parameter and readout software

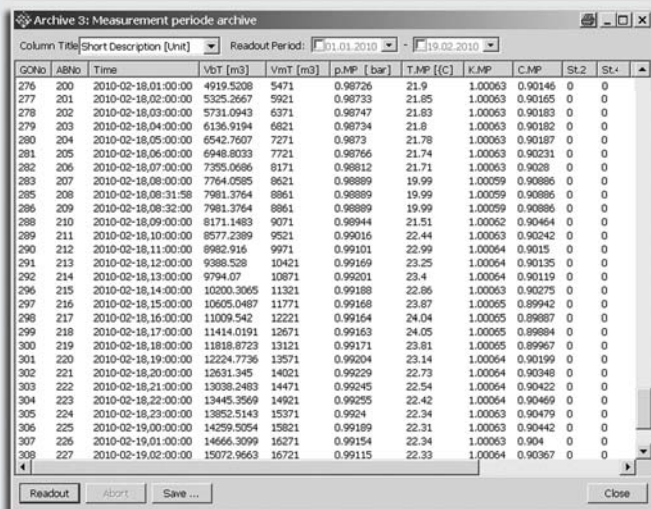
Examples of applications



Input of the gas analysis data for an EK220



Programming the inputs for a DL240



Presentation of a measurement period archive of an EK220

System conditions and order information

System conditions

- PC/Notebook with Pentium processor
- 10 MB free disc space
- Operating system Windows98/2000/XP
- Serial or USB interface for readout cable with IR readout head
- Bluetooth interface when using the Bluetooth LIS-200 readout head

We offer a variety of seminars dealing with the different software packages available.

Software versions

- Customer version
- The software modules are available for download under www.elster-instromet.com
- Supplier version
- The product code for the supplier version is reported as part of an order or request
- Inspection version
- We gladly prepare an offer for the fee-based inspection version

Accessories

- 73017812 - IR readout head with RS232 interface
 04115530 - IR readout head with USB interface
 73018980 - IIR readout head with Bluetooth interface

Your contacts

Germany
 Elster GmbH
 Steinern Str. 19 - 21
 55252 Mainz-Kastel
 T +49 6134 605 0
 F +49 6134 605 223
www.elster-instromet.com
info@elster-instromet.com

Belgium
 Elster-Instromet N.V.
 Rijkmakerlaan 9
 2910 Essen
 T +32 3 670 0700
 F +32 3 667 6940
www.elster-instromet.com
info@elster-instromet.com

Singapore
 Elster-Instromet Sdn. Bhd. (Singapore Branch)
 160 Paya Lebar Road
 #04-01 Orion@Paya Lebar
 Singapore 409022
 T +65 6247 7728
 F +65 6247 7729
sales@elster-instromet.com.sg

WinPADS200 EN02

A07.09.2010