

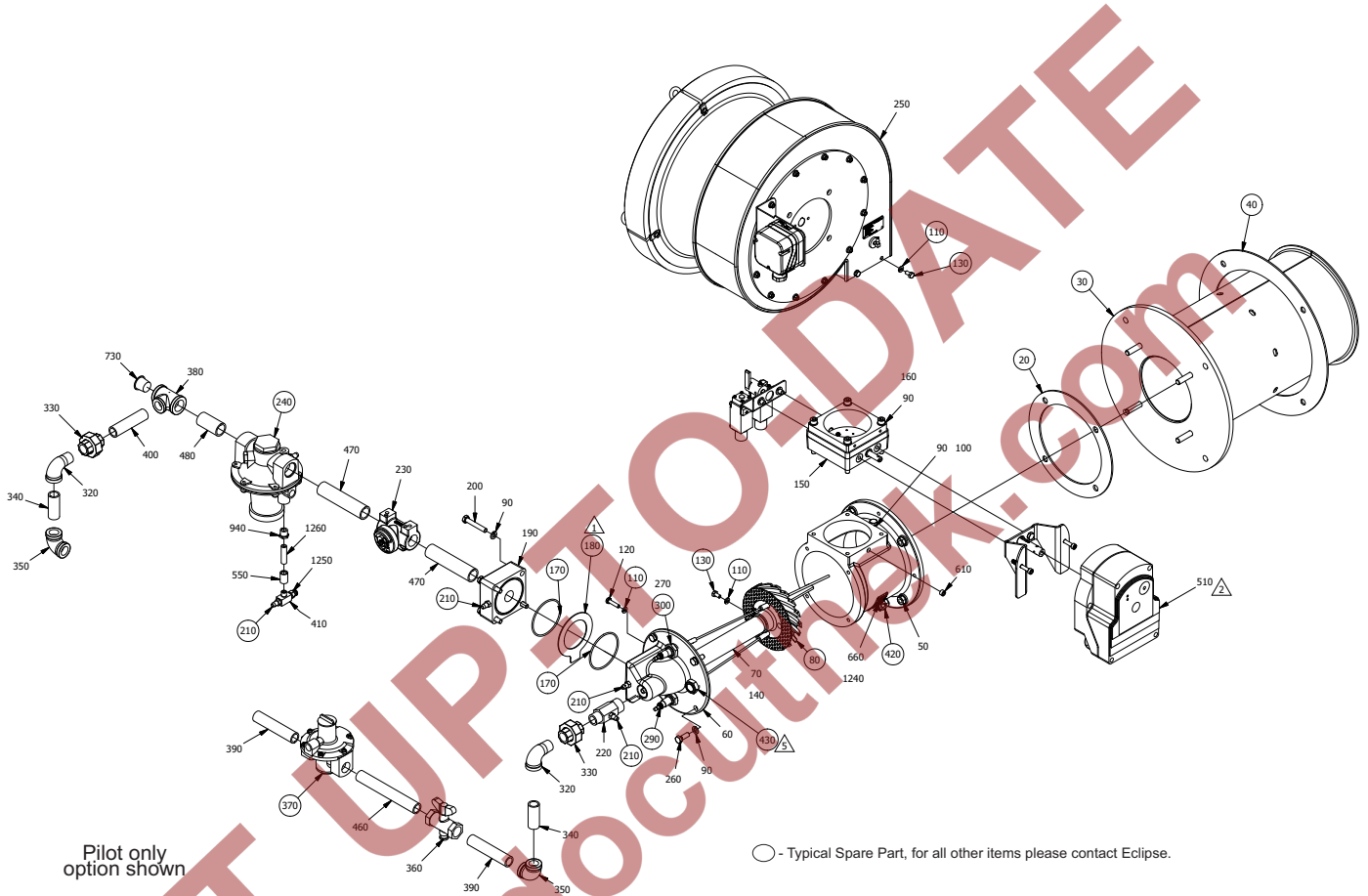
Eclipse Winnox Burners

Spare Parts List 111-8

10/28/2016

Model WX0050

Version 3



Ref	Part Number	Description
1	11132	Filter Element (406 mm diameter)
2	10857	Filter Element (508 mm x 508 mm x 51 mm)
20	14932	Burner Body to Combustor Mounting Gasket
30	10017096-1	Alloy Combustor for High Temp Operation
30	10017096	Alloy Combustor for Low Temp Operation
40	10017103	Combustor to Furnace Mounting Gasket
80	10017106	Nozzle for Natural Gas
110	15625	Lock Washer (M6)
130	15881	Bolt (M6x12)
170	14778	O-Ring for Gas Inlet Block (71 mm)
180	14188-22	Gas Orifice Plate (60 mm)

Ref	Part Number	Description
210	13445	Pressure Tap
240	KS03155128	Ratio Regulator (3/4 inch NPT)
240	KS03155122	Ratio Regulator (3/4 inch BSP)
290	100173-1	Sparkrod (295 mm)
300	100050-7	Flamerod (291 mm)
370	101029251	Bypass Regulator (1/2 inch NPT)
370	KS03155021	Bypass Regulator (1/2 inch BSP)
420	1494	Elbow Fitting for Braided Stainless Steel Impulse Line
420	14689	Elbow Fitting for Plastic Impulse Line

(Continued on next page)

WX0050 Spare Parts List (continued)

Ref	Part Number	Description
420	22085	Elbow Fitting for Stainless Steel Tubing Impulse Line
430	11737	Peepsight (1/2 inch NPT)
440	30027	Stainless Steel Tubing Impulse Line (607 mm) (not shown)
440	34505	Plastic Impulse Line (607 mm) (not shown)
440	015991-02	Braided Stainless Steel Impulse Line (607 mm)(not shown)
450	34505	Plastic Air Pressure Switch Line (607 mm) (not shown)
450	015991-02	Braided Stainless Steel Air Pressure Switch Line (607 mm) (not shown)
600	20605	Blower Button Plug
860	20606	Grommet for Air Pressure Tap
N/S	10061990	Kit, Mounting, Actuator, Size 4-5, SQM5
N/S	10061982	Kit, Mounting, Actuator, Size 4, Honeywell

NOT UP-TO-DATE
www.docuthek.com