

Volume Converter for Standard Applications with Great Future Potential

The fast-moving car industry is showing the way: compact cars now sport features that were previously reserved for premium cars. Thanks to continuous development of materials and semi-finished products, especially in the field of electronic components, it is now possible to offer better performance than that of comparable devices at the same price.

With the new development of volume converter Elster EK205, we have made use of every opportunity to be able to give our customers more for their standard applications – but without making any concessions as regards quality and durability!

Quality Made of Plastic

The EK205 is the first volume converter of the EK series with a high-quality, sturdy plastic housing. It is ensured that the functioning and measurement accuracy of the device is not affected by electromagnetic interference, even without additional screening and grounding. This saves precious time during the installation process. The compact dimensions and low weight of the device also reduce the effort and expenditure required for transport and storage.

Easy Installation

Screened cables are no longer required to connect the inputs and outputs in a separate terminal box. It is thus not necessary to fit the shields usually required. Thanks to modern, reliable connection terminals, the conductors can simply be inserted. This is an additional advantage for handling and installation. The

EK205 can be mounted on ELSTER gas meters using a simple metal bracket.

Totally Safe

The EK205 is an intrinsically safe device which is designed for use in explosion-hazard areas. It meets even the most stringent explosion protection requirements and can be installed in Ex Zones 0 and 1. It is certified in accordance with the European ATEX Directive and international IECEx Directives, which means it is approved, and can be used, all over the world.

Innovative User Interface

The user interface (display, keyboard and menu structure) is based on the tried-and-tested concept of the EK280. The graphics display is illuminated, even in battery mode, and is therefore easy to read without an additional light source, even in adverse installation conditions. The menu structure is based on Windows Explorer making navigation self-explanatory and straightforward.

Universal Data Logger

In addition to the usual daily, monthly and measuring period archives (with 10,000 lines), the EK205 also provides two flexible archives. These allow the content (meter readings, measurements, etc.) to be freely configured depending on requirements for billing and monitoring. Registration is carried out periodically, i.e. at fixed, specified intervals, or in the case of certain events, such as limit values being exceeded.



*Elster EK205 Mounted
on an Elster RABO Rotary
Gas Meter*

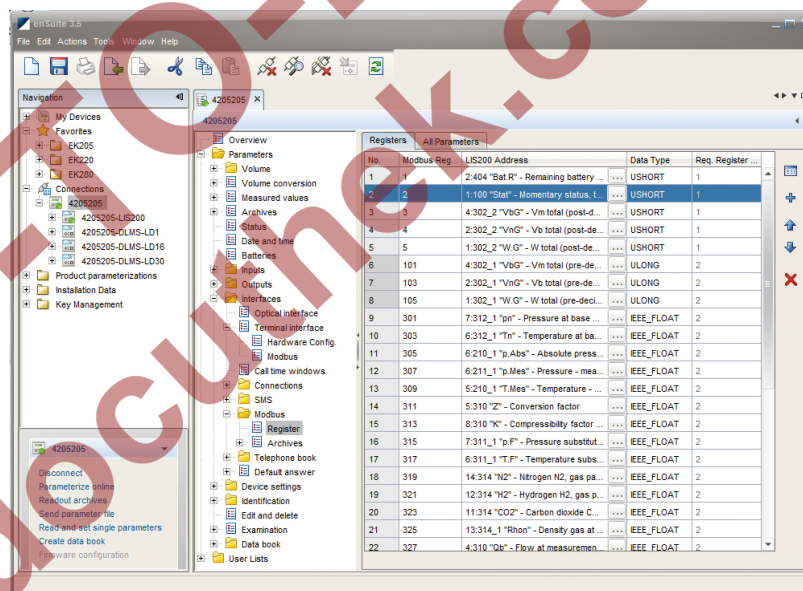


Elster EK205

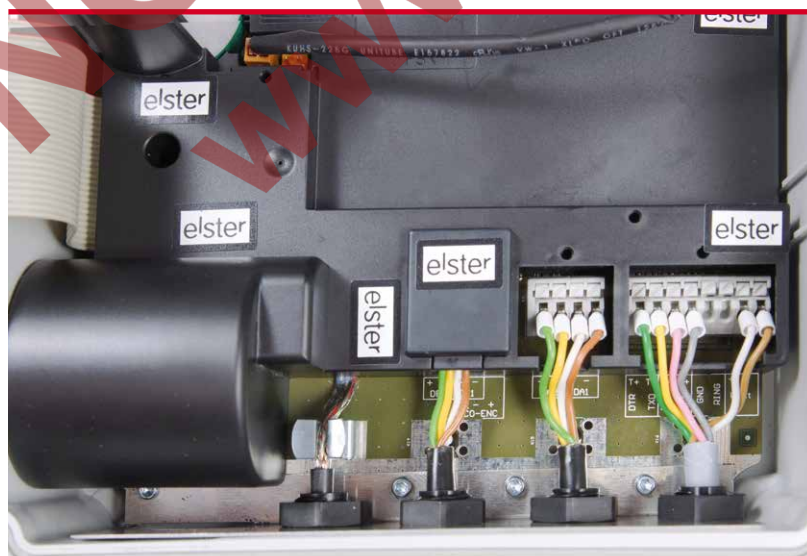
Flexible Data Communication

The unit's serial interface can be operated in RS232 or RS422/RS485 mode. It allows connection to a modem or other communications components, thanks to which process data and archive content can be read remotely. In addition to the communications protocol in accordance with IEC 62056-21, the EK205 also supports the Modbus protocol in RTU, ASCII and TCP modes, and can thus be easily integrated in meter data management or SCADA systems. The device can therefore be used for billing as well as for consumption and measurement data monitoring.

With the Elster EK205, Honeywell offers an efficient, user-friendly volume converter which



enSuite – Configuration of a Flexible Archive



Elster EK205 – Push-Lock Terminals – Connection in No Time

covers all requirements for standard natural gas measurement applications in distribution networks. Thanks to its flexibility, the data and communications interface offers a great deal of potential and is well equipped to meet the demands of the future. Furthermore, the device supports a software update both via the optical interface and by remote data transfer on the basis of the WELMEC 7.2 Guide. This means that the device can be kept up to date even after it has been installed.

Rüdiger Pfeil

ruediger.pfeil@honeywell.com