

EK280 operation made easy:

## Clear structures in the user interface

The EK280 offers many functions and new options. We reported on this in the last editions of Profiles. Today, we would like to describe to you the structure of the user interface on the unit and within the enSuite software in somewhat greater detail. This is because these represent your communications channel to the EK280.

The user interface of the EK280 is subdivided into two areas: the topmost line (status line) is available at all times and displays information on the current status of the unit. The area beneath it is subdivided into several tabs – the content is based on the requirements and access rights of the various user groups. The content of the tab currently selected in each case is displayed in this area.

### The unit status – all OK?

With a few symbols, the status line provides information in relation to the most important unit statuses, such as remaining service life of the unit's battery or the reception field strength of the integrated

or externally connected modem, for example. It signals pending messages, alarms and warnings with corresponding letters.

### The most important aspects at a glance

The "Main" tab contains the current meter readings for the standard and operating volume, the current pressure, the temperature and the conversion factor, in addition to the compressibility (Fig. 1). If you so wish, you can reduce the contents of the tab to a minimum number of displayed values such as the operating and standard volume, for instance (Fig. 2).

### Information for the customer

A definable number of values is displayed in the tab in a simple list, depending on customer access rights. This is where you can also find the peak-load values of the data logging function, for instance. Is the display to be restricted to this tab so



Fig. 1: Everything at a glance

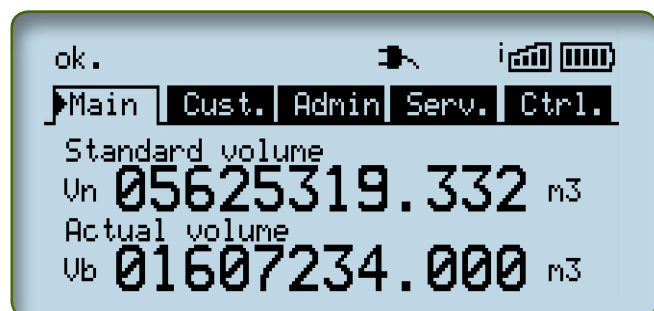


Fig. 2: Short overview

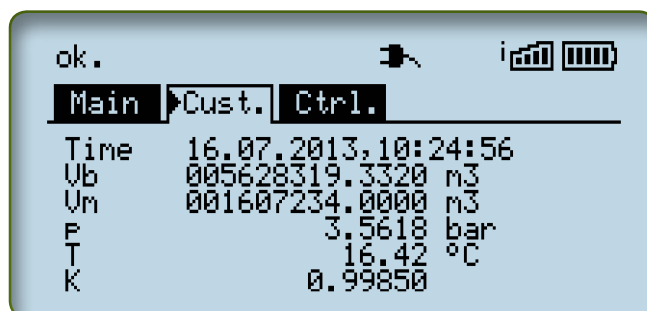


Fig. 3: The Customer menu

as to prevent unauthorized access to the others? Not a problem – you can set the number of tabs displayed individually (Fig. 3).

### Administration and service

Of course, the unit administrator (e.g. the meter operator) and a service technician (calibration officers) need all available values and parameters to make changes or interpret status information during commissioning. For this purpose, the two tabs "Admin" and "Serv." keep at hand all required values and parameters grouped logically and arranged in a tree structure (Fig. 4).



Fig. 4: Logical grouping and display on the unit and in the enSuite parameterization software are the same.

The difference between the two tabs is that they provide the service technician and the calibration officer with even more additional functions which are required for their relevant tasks in each case. For instance, these are functions used during a test and also the data book.

It is advantageous that the enSuite parameterization software uses the same structure in the navigation tree under the



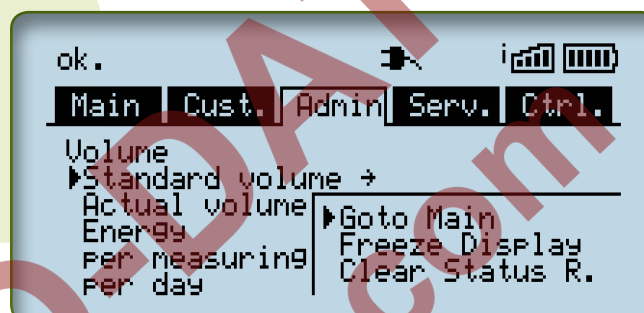
Fig. 5: In the parameterization software enSuite, the individual parameters (in this case, the parameters for the internal modem) are also displayed in exactly the same way as on the unit.

"Parameterize online" function (Figs. 4 and 5). This means that if you are familiar with programming the unit, you will also be familiar with the "enSuite" software or vice-versa.

### Control

The parameters for monitoring special settings of the unit have been transferred to the "Ctrl." tab. These are scheduled for use by administrators and service technicians only. Amongst other items, you can define how many tabs are to be displayed and what values the user can see in the main screen ("Main").

Fig. 6: The context menu – important functions at the press of a button



for this which can be accessed simply and quickly: activate the context menu with the function button, select the "Go to Main" function and that's it (Fig. 6). The functions which clear the status register or allow you to freeze the current display for servicing purposes are also extremely useful.

The diversity of functions and the new options of our volume conversion device EK280 mean many setting options. Organizing operation so that it remains clearly arranged both for the "simple" user (customer) and for administrators and servicing staff is without doubt a challenge. Thanks to this new operating philosophy, we have overcome this challenge and have implemented intuitive use of the unit – without additional software either. This allows you to reach your goal more quickly!

Rüdiger Pfeil

ruediger.pfeil@elster.com

