

MAKING DATA ARCHIVES TRANSPARENT

New ELSTER software WinLOOK *fast – secure – uncomplicated*

Over the years, data collection, storage, transfer and evaluation for ELSTER volume correctors and data loggers has reached a high level of quality and flexibility. A choice of different user interfaces, a variety of input and output possibilities, the export of the data to standard software programs – almost anything is possible and can be adapted to meet individual customer requirements.

The basis for all of the software modules is the central database, where new data can be entered, changed and administered in an appropriate format at all times. In order to use all of the possibilities to the full, as is the case with any high-performance computer program, training and experience in using the software package is absolutely essential. For users who are constantly working with the software, it very quickly becomes routine. For a newcomer, however, it's always hard going for a time before they become familiar with the software and the desired results begin to become apparent.

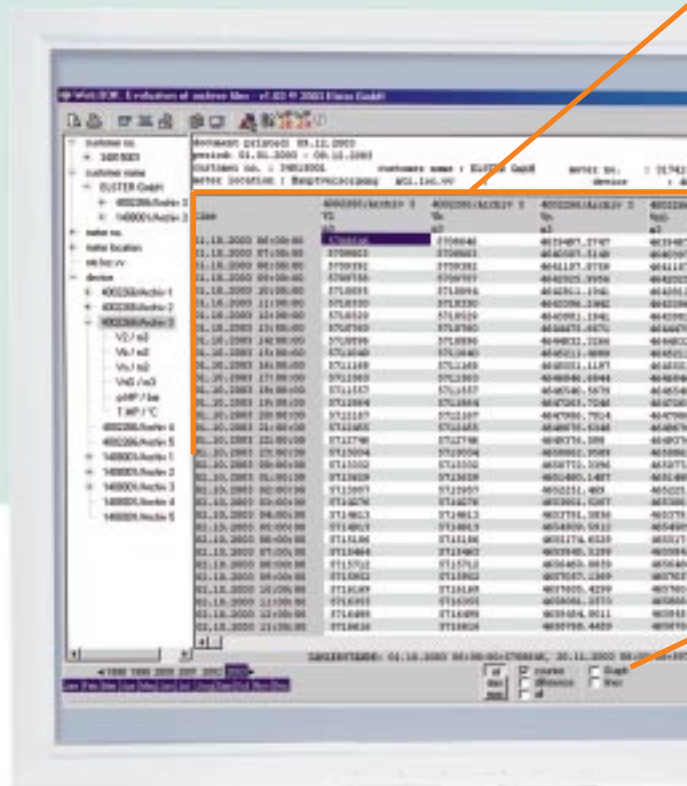
Is there any way to make it faster and more simple? Is there a solution for standard tasks which the user can get to grips with immediately, even if the user does not often have to work in the field of data processing? We can now answer these questions with a clear 'YES'! The new software WinLOOK is now available and, having been tested by a number of users, has passed the initial test phase with flying colours.

When working with the WinLOOK program, it is simple to display the data from volume correctors and data loggers – all you need to do is click on the WinPADS icon and read out the archives. WinPADS (parameter and read-out software) stores these archives in ASCII files and WinLOOK has direct access to these files enabling a quick and easy visualization of the meter readings and metering data either in tabular or graphical form.

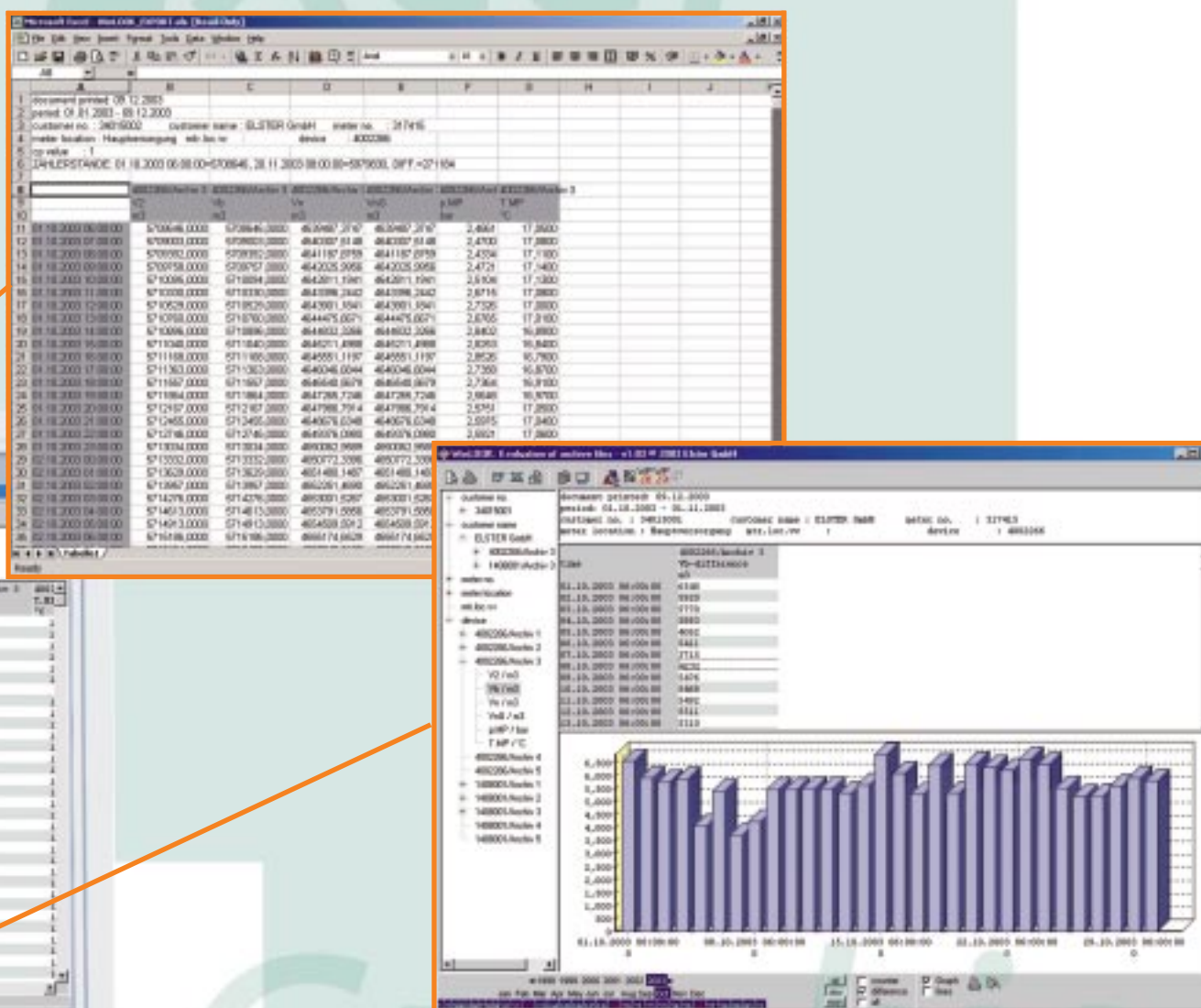
In order to select which archive is to be displayed, the identification data stored in the devices, e.g. customer name or metering point code, is organised in a simple tree structure. Of course, it is also

possible to arrange the data from several devices belonging to one customer or all of the data channels in a volume corrector in a clear and easy to read table. A bar chart or line diagram corresponding to the data displayed can be called up and shown on the screen.

And then? Just click on the Excel or Word icon and the table will be exported right away to the Microsoft software required and can be used for further processing or can be archived as necessary.



Since the read out and stored data is in a compact form (it is not necessary to read, interpret and translate any database structure), this process is fast, even if the computer is relatively old and slow. A click on the mouse and the results can be seen immediately.



What are the most important advantages of WinLOOK?

- ▶ The user only needs to start up WinLOOK.
- ▶ The user interface is simple and easy to use.
- ▶ The program runs on all versions of Microsoft operating systems no matter what country settings are on hand.
- ▶ Using the remote data transfer function included in WinPADS, it is also possible to set up a 'mini' remote data transfer system.

WinLOOK is particularly suitable for energy suppliers who have a smaller number of special-contract customers or for end-users who would like to optimize energy consumption and/or production processes.

When would you like to test the new WinLOOK program? We would be glad to send you a demo version on a CD. Just send us an e-mail to WinLOOK@elster.com.

DR. HARALD DORNAUF
RÜDIGER PFEIL, ELSTER GERMANY

dornauf@elster.com
pfeil@elster.com