

SLATE™ Service Pack

SLATE Service Packs are used to update software applications and data files in a SLATE™ Base module. The Service Pack is intended to add new features by loading new module firmware in the Base or resolve a known issue. Since files are replaced or added in the Base module discretion should be used whether a service pack is applicable for a customer system or not. If the Service Pack provides no benefit to the customer, it may not be necessary to install it. Service Packs should only be installed when the system can be stopped for this upgrade as it will cause the Base module to be temporarily inoperable and eventually reset during the process, forcing a system shutdown.

The Service Pack is a single file that has a file extension of ".ssp". This file extension denotes it as a service pack file. Inside the service pack file are the applications and other data files that will be installed. The service pack file is brought to a Base module using a USB storage device.

Required Tools

Items necessary for a service pack installation are the following:

- SLATE Base module
- Chrome browser connected to Base module via Ethernet port
- USB stick containing service pack

Installation

The following instructions assume that a SLATE Display (or alternate connection such as PC) is available and connected to the SLATE Base module. Installation of a service pack should follow these steps:

1. Insert USB stick with service pack into the Base module
2. Select "SERVICE PACK" option on System Tools page located in the Honeywell Generic Web pages (see Figure 1).

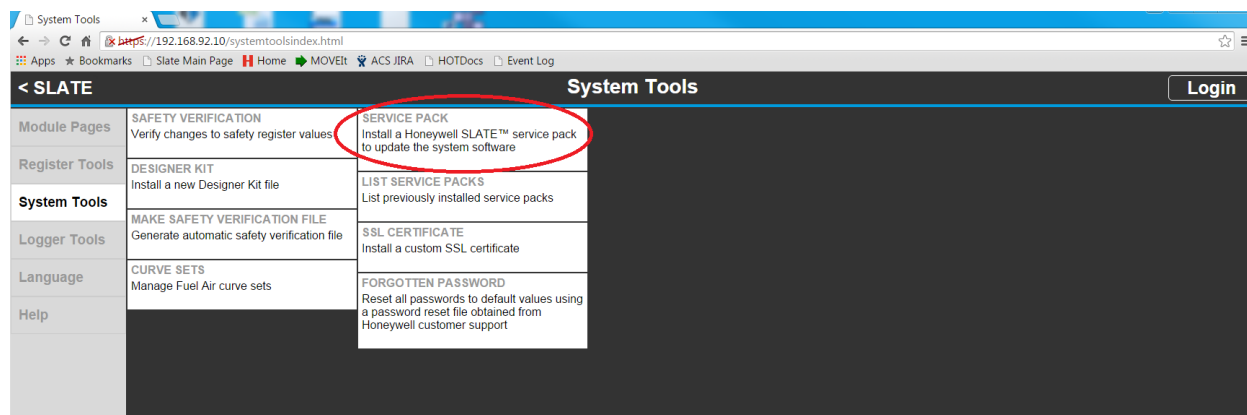


Figure 1 SERVICE PACK option

3. Login as Installer or designer (see Figure 2). The default Designer level password is "SlateDesignerPassword" and the Installer level is "SlateInstallerPassword".

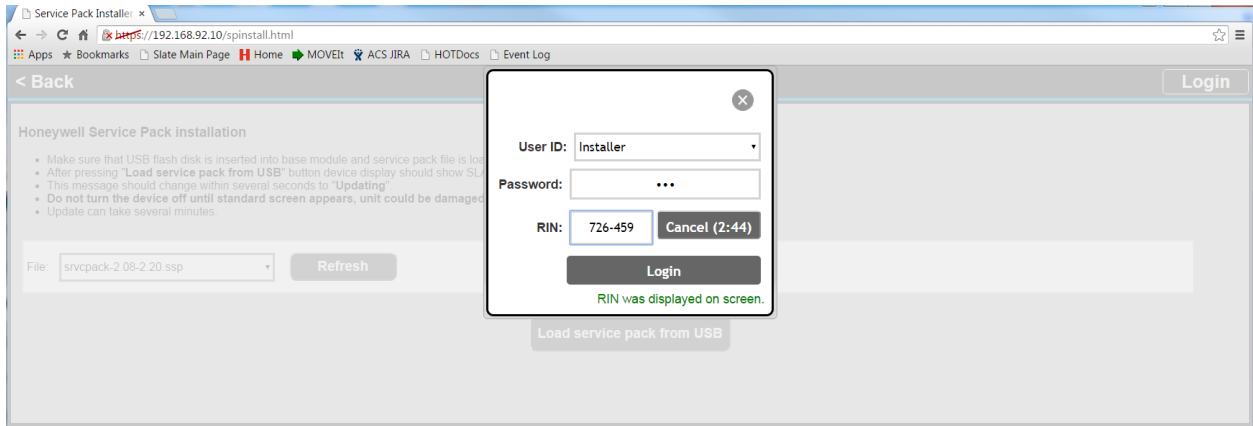


Figure 2 User login

4. Select Service Pack for installation (see Figure 3). It is possible that the USB drive used to load the service pack contains other (older) service packs. Make sure you select the intended service pack to load from the drop down list.

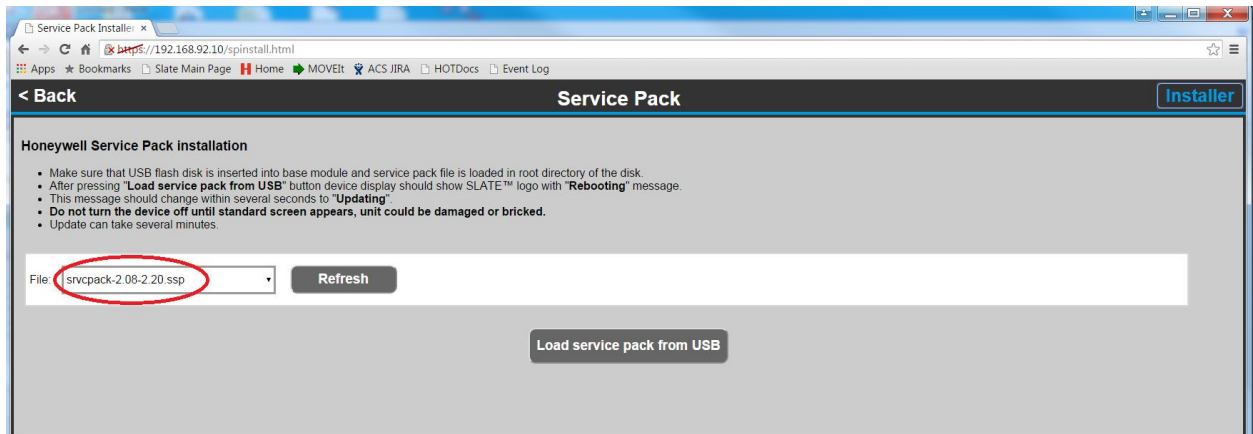


Figure 3 Select service pack

5. Click the "Load service pack from USB button (see Figure 4).

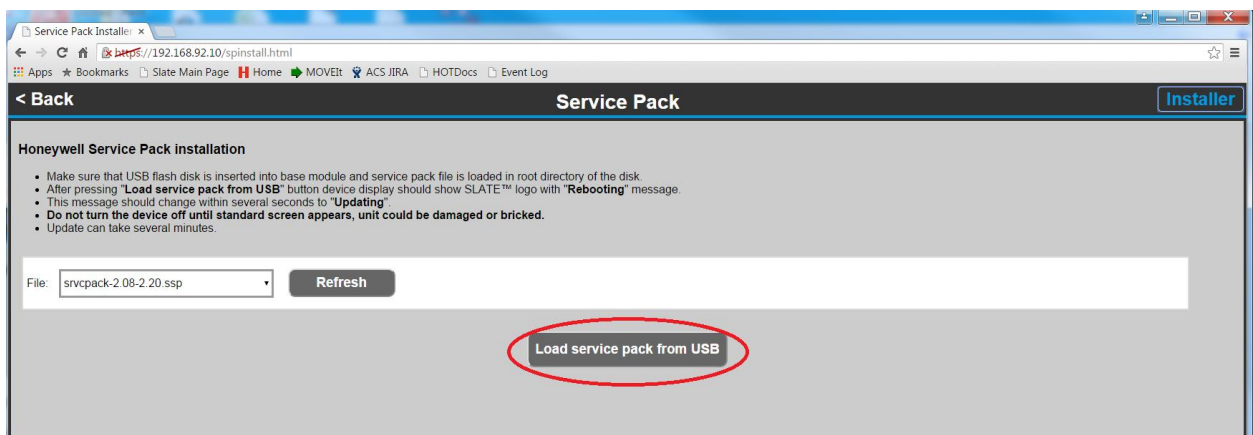


Figure 4 Select "Load service pack" button

6. Wait for the Service Pack installation to complete (see Figures 5 and 6).

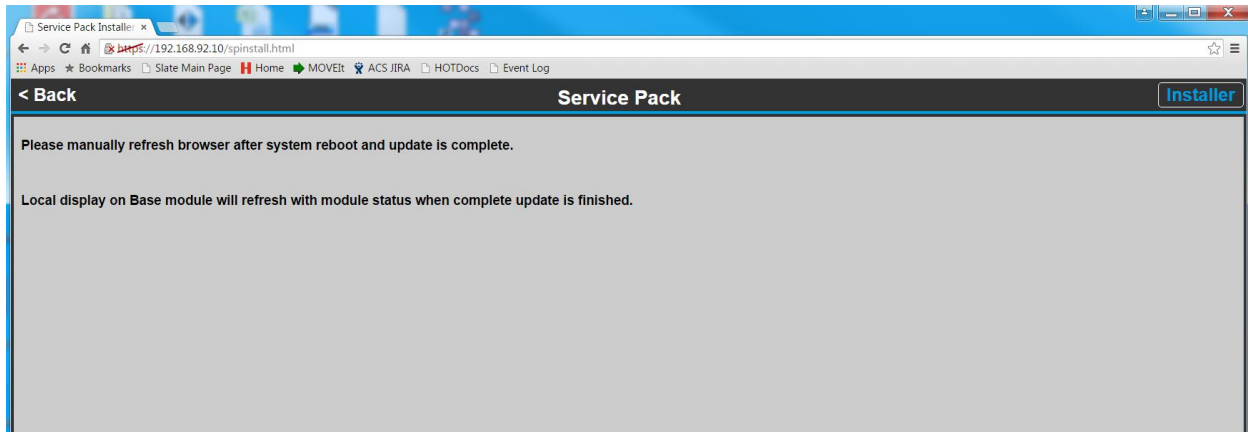


Figure 5 Installation started (Base module 2.20 or newer)

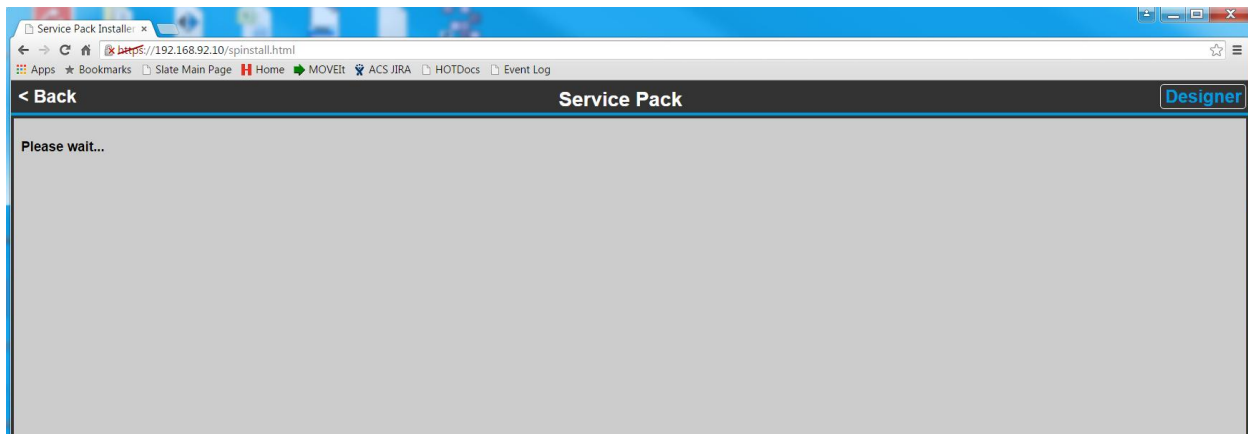


Figure 6 Installation started (Base module 2.06 or older)

The installation may take several minutes to finish. The Chrome browser user interface will lose its connection with the Base module since the Ethernet driver is stopped in the Base module and the module is reset. The network connection will need to be reestablished once the Base module is operational (system is operating and status is displayed on the Base module local display). Reconnection can be invoked by selecting the refresh button in the Chrome browser.

Note: Reconnection of the Chrome browser may not be successful immediately using the refresh button in some instances. It may be faster to reconnect to the Base module by shutting down the open browser instead and restarting it .

The local display on the Base module will display several messages during the service pack installation. "SLATE™ REBOOTING" and "SLATE™ UPDATING" messages will be displayed during the installation. Completion of the installation will result in the usual Base module status page shown with all attached modules being displayed.

Once the Base module is again functional the service pack load history can be reviewed to insure that the correct service pack was loaded.

Service Pack History

The history of all Service Packs installed in a Base module can be viewed from the Chrome browser interface. The history is displayed by selecting the "LIST SERVICE PACKS" option on the System Tools page (see Figure 7).

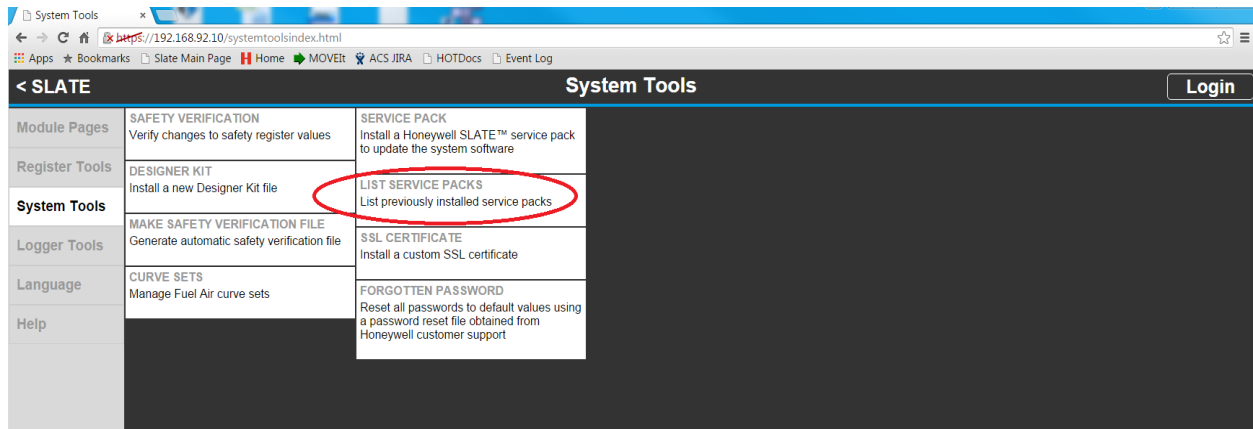


Figure 7 List service packs

A list of all Service Packs installed are displayed and can be scrolled on the page (see Figure 8).

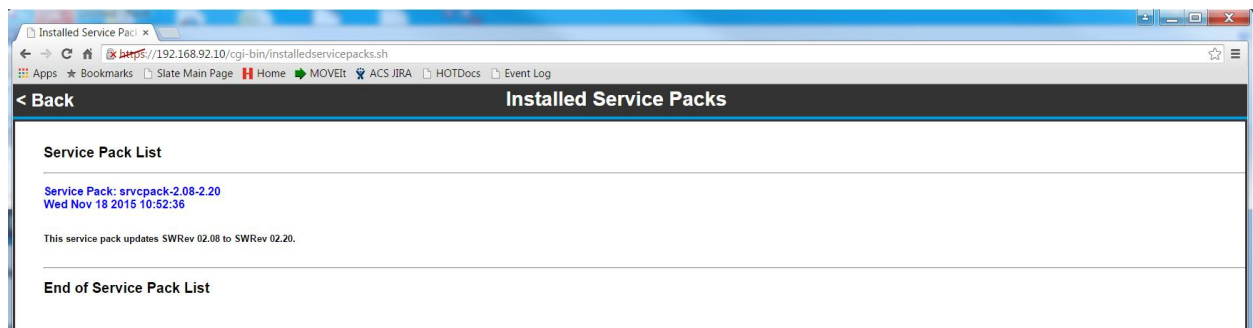


Figure 8 Service pack history

The name of the service pack, when it was installed, and a brief description of the purpose of the service pack is provided.