

Operating instructions

PC opto-adapter PCO 300



Translation from the German

© 2012 Elster GmbH

Contents

PC opto-adapter PCO 300	1
Contents	1
Safety	1
Checking the usage	2
Part designations	2
Type label	2
Installation	2
Checking the connection	4
Establishing connection to PC software	
BCSoft	4
BCSoft is used for the first time with PC opto-adapter PCO 300	4
BCSoft was operated up to now with opto-adapter (RS232)	5
Charging PCO 300	5
Technical data	6
Declaration of conformity	6
Contact	6

Safety

Please read and keep in a safe place



Please read through these instructions carefully before installing or operating. Following the installation, pass the instructions on to the operator. This unit must be installed and commissioned in accordance with the regulations in force. These instructions can also be found at www.docuthek.com.

Explanation of symbols

•, **1**, **2**, **3**... = Action
> = Instruction

Liability

We will not be held liable for damages resulting from non-observance of the instructions and non-compliant use.

Safety instructions

Information that is relevant for safety is indicated in the instructions as follows:

DANGER

Indicates potentially fatal situations.

WARNING

Indicates possible danger to life and limb.

CAUTION

Indicates possible material damage.

All interventions may only be carried out by qualified gas technicians. Electrical interventions may only be carried out by qualified electricians.

Conversion, spare parts

All technical changes are prohibited. Only use OEM spare parts.

Transport

On receipt of the product, check that the delivery is complete (see Part designations). Report any transport damage immediately.

Storage

Store the product in a dry place. Ambient temperature: see Technical data.

Checking the usage

PC opto-adapter PCO 300 for wireless communication between the PC software for burner control units BCSofT and the units BCU 3xx, BCU 4xx, IC 40, PFU 7xx and PFA 7xx.

Bluetooth technology is used for the wireless connection between PC and PCO 300.

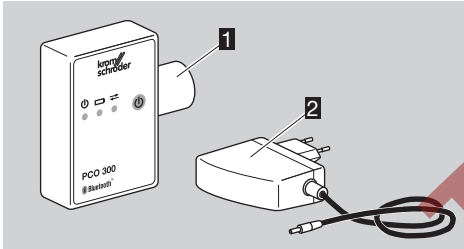
Preconditions for operation with PC opto-adapter PCO 300:

PC software BCSofT from version 3.6.8

PC with Bluetooth (BT) interface

This function is only guaranteed when used within the specified limits – see page 6 (Technical data). Any other use is considered as non-compliant.

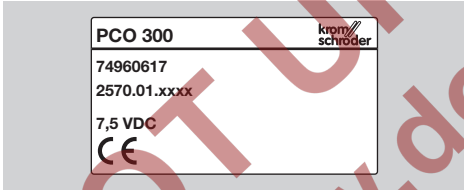
Part designations



1 PC opto-adapter PCO 300

2 Charger

Type label



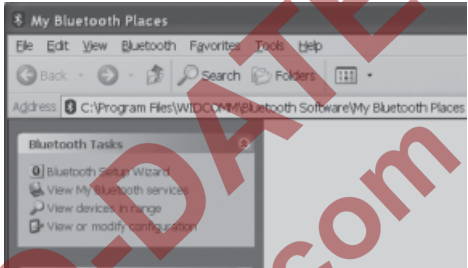
Installation

- ▷ When you start up your PC, the symbol for a Bluetooth interface appears in the taskbar. Bluetooth symbol red: connection deactivated, Bluetooth symbol white: connection ready for operation, Bluetooth symbol green: devices connected.

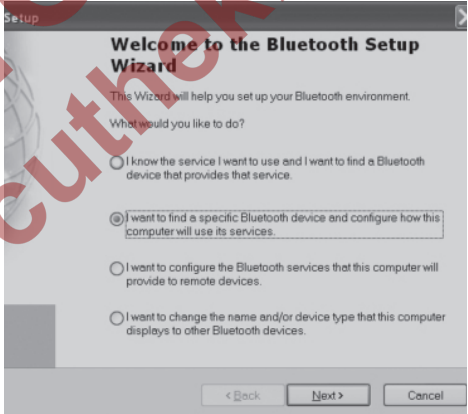


- ▷ If your PC does not have a Bluetooth interface, you can use a USB Bluetooth dongle.
- Install the Bluetooth driver software which is supplied with your USB Bluetooth dongle.
- ▷ The Bluetooth environment is to be set up before the PC opto-adapter PCO 300 and PC establish a connection for the first time:
- 1 Press the “ON button” on the PC opto-adapter PCO 300.

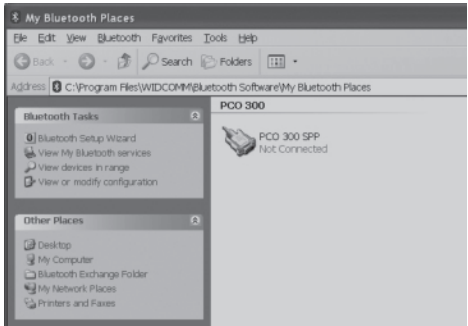
- ▷ The PCO 300 is switched on when the green LED is lit.
- ▷ Communication is enabled for 5 min. If communication is not used during this time, the PCO 300 switches to standby mode.
- ▷ If the red LED is blinking, the device needs to be charged, see page 5 (Charging PCO 300).
- 2 Open the window “My Bluetooth Places” by double-clicking on the Bluetooth symbol in the taskbar of your PC.



- 3 Open the window “Bluetooth Setup” by double-clicking on the “Bluetooth Setup Wizard” symbol.



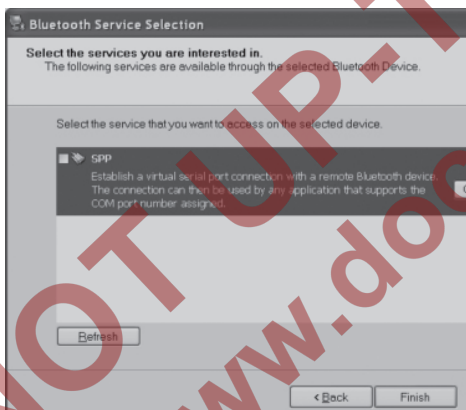
- 4 Click on the option “I want to find a specific Bluetooth device...”.
- 5 Confirm your selection by clicking on “Next”.
- ▷ The search for Bluetooth devices will start. The devices found are displayed.



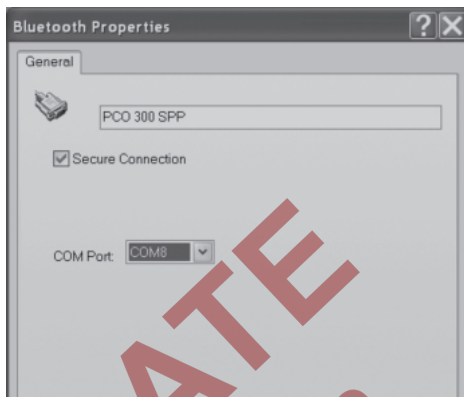
- 6 Click on the "PCO 300" symbol.
- 7 Confirm your selection by clicking on "Next".
- This opens the "Bluetooth Security Setup" window.



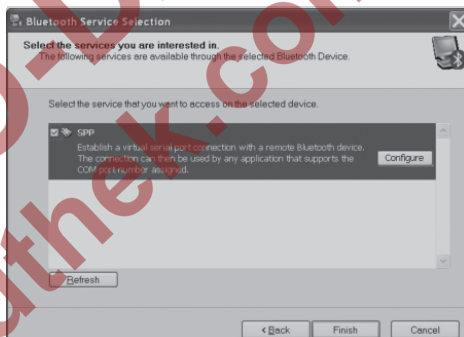
- 8 Enter the PIN code: 0000.
- 9 Click on the button "Initiate Pairing".
- This opens the "Bluetooth Service Selection" window.



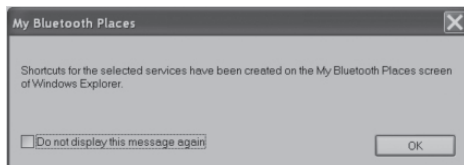
- The PCO 300 supports the SPP (Serial Port Profile) service.
- 10 Click on the "SPP" symbol.
- 11 Confirm your selection by clicking on "Finish".



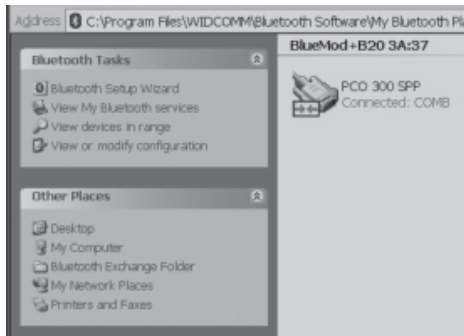
- 12 Confirm settings by clicking on "OK".
- The "SPP" configuration is displayed.



- 13 Click on the button "Finish".
- The link between the devices is created.

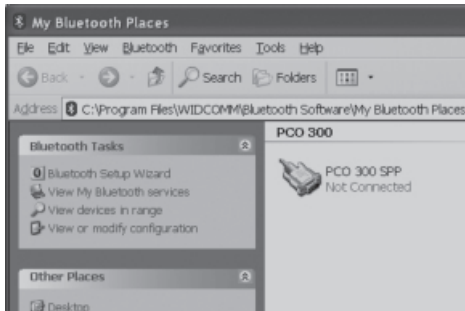


- 14 Confirm the message by clicking on "OK".



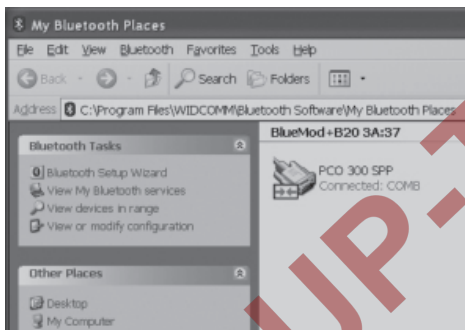
- 15 Confirm the link between the devices by clicking on "OK".

- ▷ This opens the “My Bluetooth Places” window and “PCO 300 SPP” is displayed.



Checking the connection

- ▷ You can check the connection manually.
- 16 The connection is established by double-clicking on the “PCO 300 SPP” symbol.



- 17 Confirm your selection by clicking on “OK”.
- ▷ The connection is established.
- ▷ Installation has been successfully completed.
- 18 To use the Bluetooth connection for BCSOft, disconnect the connection. Move the mouse over the “PCO 300 SPP” symbol, right-click to open the menu and click on “Disconnect”.
- ▷ The connection is disconnected.

Establishing connection to PC software BCSOft

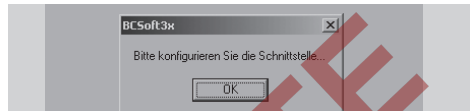
BCSOft is used for the first time with PC opto-adapter PCO 300

- 1 Press the “ON button” on the PC opto-adapter PCO 300.
- ▷ The PCO 300 is switched on when the green LED is lit.
- 2 Position the PCO 300 over the optical interface of the target device.
- ▷ Target device: BCU 4xx, PFU 778/798, BCU 370, IC 40: SCom2, PFU 760/780, PFA 7xx: CCom.

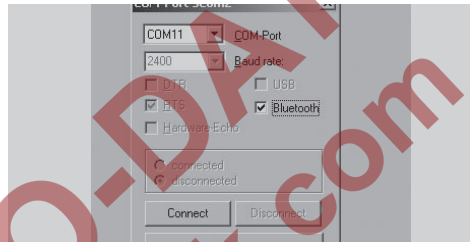
- ▷ When you start up your PC, the symbol for a Bluetooth interface appears in the taskbar.



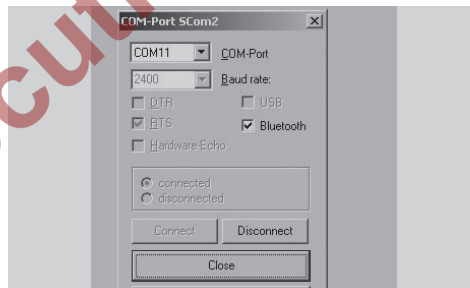
- 3 Start the PC software BCSOft by double-clicking on the “BCSOft” icon on your desktop.



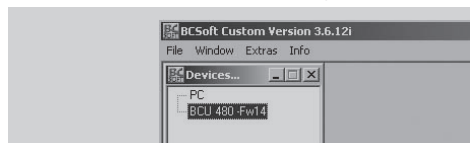
- ▷ Confirm the message by clicking on “OK”.



- 4 Select an interface for the PCO 300 depending on the target device in the “COM Port” drop-down menu, e.g. COM11.
- 5 Select the “Bluetooth” checkbox.
- 6 Click on “Connect”.



- ▷ As soon as the connection to the PCO 300 has been established, the “Connect” button becomes inactive and the Bluetooth symbol in the taskbar is green.
- 7 End the dialogue by clicking on “Close”.
- ▷ A scan then starts automatically.



- ▷ BCSOft is available.
- ▷ When closing BCSOft, the settings are automatically saved.

- If BCSoft was used last time with the PCO 300, when restarting BCSoft, the “Connect” dialogue box is reopened, so that the settings can be confirmed or another type of connection may be selected.

BCSoft was operated up to now with opto-adaptor (RS232)

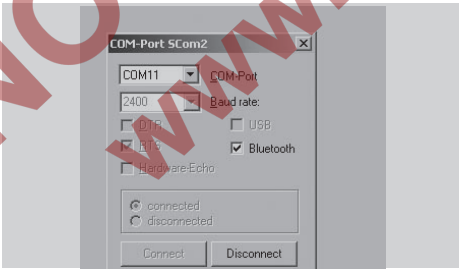
- 1 Press the “ON button” on the PC opto-adaptor PCO 300.
- The PCO 300 is switched on when the green LED is lit.
- 2 Position the PCO 300 over the optical interface of the target device.
- Target device: BCU 4xx, PFU 778/798, BCU 370, IC 40: SCom2, PFU 760/780, PFA 7xx: CCom.
- When you start up your PC, the symbol for a Bluetooth interface appears in the taskbar.



- 3 Start BCSoft by double-clicking on the “BCSoft” icon on your desktop.
- When starting, BCSoft connects using the last saved interface.
- A scan then starts automatically.
- PC opto-adaptor (RS232) will not be found.

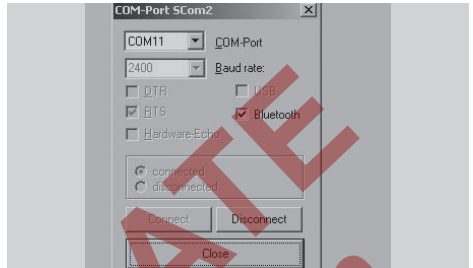


- Confirm the message by clicking on “OK”.
- 4 In order to connect the PC opto-adaptor PCO 300, select an interface depending on the target device in the menu Tools\Options\Interface.
- This opens the “Connect” dialogue box.

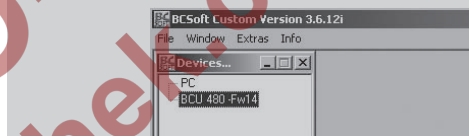


- 5 Click on the button “Disconnect” in order to disconnect the previous connection.

- 6 Select an interface for the PCO 300 depending on the target device in the “COM Port” drop-down menu, e.g. COM11.
- 7 Select the “Bluetooth” checkbox.
- 8 Click on “Connect”.



- As soon as the connection to the PCO 300 has been established, the “Connect” button becomes inactive and the Bluetooth symbol in the taskbar is green.
- 9 Click on “Close” to end.



- 10 Start the scan by pressing “F3”.
- BCSoft is available.
- When closing BCSoft, the settings are automatically saved.
- If BCSoft was used last time with the PCO 300, when restarting BCSoft, the “Connect” dialogue box is reopened, so that the settings can be confirmed or another type of connection may be selected.

Charging PCO 300

- When the green POWER LED blinks at a 1:1 ratio, this indicates that the battery is empty.
- A battery charger is included in the delivery.
- The charger cable is connected with the PCO 300 and the mains power supply unit with the plug socket.
- The voltage indicated on the mains power supply unit (100 – 240 V AC/7.5 V DC) must not be exceeded.
- The green POWER LED and the yellow CHARGE LED are lit during charging.
- If charging is switched from fast charge to trickle charge, the yellow CHARGE LED blinks at a ratio of 7:1.
- Charging lasts approx. 2.5 hours.
- In the case of total discharge, approx. 4 hours.

Technical data

PCO 300

Bluetooth interface: Bluetooth 1.1/Class 2

Range: approx. 10 m

Serial Port Profile (SPP)

IR interface: baud rate 2400 baud

Data format: 8N1

Capacity: 7 h of continuous operation

Standby time: 5 minutes

Dimensions:

Width: 50 mm

Height: 72 mm

Depth: 29 mm

Lens: \varnothing 26 mm

Weight: 130 g

Operating temperature range: 0 – 50°C

Charging temperature range: 0 – 40°C

Optical interface retaining force: > 17 N

Voltage supply:

Battery with integrated charging connection

Battery type: NiMH 2.4 V/600 mAh

Charger

Mains voltage:

Input 100 – 240 V AC

Output 7.5 V DC (DC connector, 3.5 mm external dia./1.3 mm internal dia.)



Charging time: approx. 2.5 h, in the case of total discharge: approx. 4 h

Declaration of conformity



We, the manufacturer, hereby declare that the product PCO 300 complies with the essential requirements of the following Directives and Standards:

Directives:

- 2004/108/EC (EMC)
- 2006/95/EC (LVD)
- 1999/5/EC (R&TTE)

Standards:

- EN 61000-6-4
- EN 61000-2-2
- EN 60950-1
- EN 301489-1 V 1.8.1
- EN 301489-17 V 1.3.2
- EN 300328 V 1.7.1

The production is subject to a Quality System pursuant to DIN EN ISO 9001.

Elster GmbH

Scan of the Declaration of conformity (D, GB) – see www.docuthek.com

Contact

If you have any technical questions, please contact your local branch office/agent. The addresses are available on the Internet or from Elster GmbH.

We reserve the right to make technical modifications in the interests of progress.

elster
Kromschröder

Elster GmbH
Postfach 28 09, D-49018 Osnabrück
Strothweg 1, D-49504 Lotte (Büren)

T +49 541 1214-0

F +49 541 1214-370

info@kromschroeder.com, www.kromschroeder.com